

VARIETIES.

A NEW plan for facilitating the small savings of the poor has been originated by the British postmaster-general.

THE BOSTON CELEBRATION.—The seventeenth of September was a gala day for Boston—the celebration of the two-hundred-and-fiftieth anniversary of the founding of the city.

The day of the celebration was fair and brilliant, and the principal thoroughfares of Boston were crowded from morning till night by citizens and visitors.

The statue of John Winthrop had been placed in position and uncovered without ceremony the previous afternoon. It represents the Governor clad in ancient garb, standing with his right hand holding the roll of the colony charter, and his left bearing the volume of the holy Scriptures.

OUR CHESS COLUMN.

Solutions to Problems sent in by Correspondents will be duly acknowledged.

TO CORRESPONDENTS.

J. W. S. Montreal.—Papers to hand. Many thanks. E. D. W. Sherbrooke, P. Q.—Correct solution received of Problem No. 296.

M. J. M. Quebec.—Letter received. Thanks.

On Saturday evening, the 2nd inst., the annual meeting of the Montreal Chess Club was held in the chess-room at the Gymnasium, Mansfield street.

The routine business of the meeting having been brought to a conclusion, a discussion took place with reference to the operations of the club during the coming winter.

Previously, however, to the passing of the latter resolution, a member of the Quebec Chess Club, who was present, was asked to give what he considered to be the views of that body on the subject, and he stated that he had every reason to believe that the proposal would be very willingly entertained by the whole of the members of his club.

In recording the foregoing particulars, we must not forget to add that the past year of the Montreal Chess Club has been a satisfactory one. There has been a full attendance of players every club night, business affairs have been carried on in a methodical manner, the condition of the chess room has been all that could be desired, and the boards and men have been kept in excellent order.

These advantages (for such they should be esteemed) are due to the efficient manner in which the Secretary's duties have been performed by J. Henderson, Esq., and he has, we are sure, the thanks of the entire club on that account.

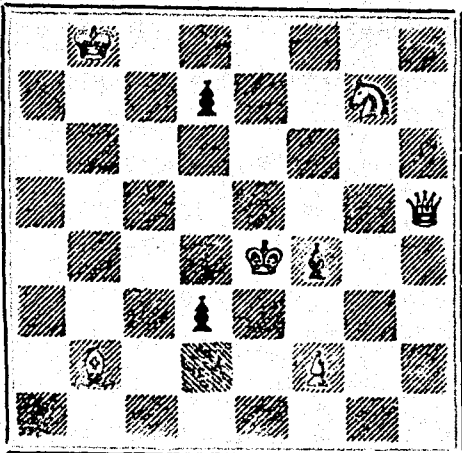
Since writing the above we learn that an intimation of the contemplated telegraphic tourney between the players of the two Provinces has been most cordially received by the Quebec Club, and that immediate steps will be taken to open a correspondence on the subject with the Chessplayers of Ontario.

The London Sporting and Dramatic News of Sept. 11, referring to the report (which we fear is an unfounded one) that Captain Mackenzie is to have a weekly chess column in the New York Herald, has these pleasant words: "We are very pleased to learn that it is contemplated to open a chess column in the New York Herald under the editorship of Captain Mackenzie."

PROBLEM No. 298.

By J. W. Abbott.

BLACK.



WHITE.

White to play and mate in three moves.

GAME 427TH.

Played in England, some time ago, between the Revd. J. Croker and Mr. A. E. Studd. The former gave the odds of pawn and move.

(Remove Black's K B P.)

White.—(Mr. A. E. Studd.) Black.—(Mr. Croker.)

- 1. P to K 4 1. Kt to Q B 3
2. Kt to K B 3 2. P to K 4
3. Kt to B 3 3. Kt to B 3
4. P to K R 3 4. H to B 4
5. P to Q R 3 5. Castles
6. B to B 4 (ch) 6. K to R sq
7. P to Q 2 7. P to Q 3
8. H to K Kt 5 8. Kt to K 2
9. Kt to Q 5 9. Q Kt takes Kt
10. B takes Kt 10. P to B 3
11. B to Kt 3 11. Q to B 2
12. Kt to R 2 12. P to K R 3
13. B to R 4 13. B to Q 2
14. Kt to K 4 14. B to K sq
15. Kt takes Kt 15. P takes Kt
16. Q to B 3 16. Q to Kt 2
17. B to Kt 4 17. H to Q 2
18. Q takes Q (ch) 18. K takes Q
19. Castles (Q R) 19. P to K R 4
20. B to B 4 20. P to Kt 4
21. P to Q Kt 4 21. B to Q 5
22. B to R 2 22. P to Q R 4
23. B to K 7 23. K R to Q B sq
24. B takes P 24. R P takes P
25. K P takes P 25. R takes P
26. B to Kt sq 26. B to B 6 (a)

And White resigned.

NOTES.

(a) The termination is very pretty, and White cannot avoid the threatened mate in four moves, except by the sacrifice of a piece.

SOLUTIONS.

Solution of Problem No. 296.

- White. Black.
1. Q to Q Kt 2 1. K to Q 4
2. Q to Q Kt 6 2. K to B 5
3. Q mates

Solution of Problem for Young Players No. 294.

- WHITE. BLACK.
1. Q takes P 1. Any move
2. Mates nec.

PROBLEM FOR YOUNG PLAYERS, No. 295.

- White. Black.
K at Q sq K at K Kt sq
Q at Q 2 Q at Q R 6
Kt at Q 6 R at Q sq
R at Q R sq
Pawns at K R 2 and K Kt 2

White to play and mate in seven moves.

SEND 10c. to the Queen City Card House, Toronto, Ont., for 25 Pretty Bird and Floral Cards, 25 new Transparent, 25 White Bristol, or 5 neat assorted Cards, with name. 12 Turn down card, gilt beveled edge, very handsome, 20c. Outfit 10c.

E. N. FRESHMAN & BROS.

Advertising Agents, 186 W. Fourth St., CINCINNATI, O., Are authorized to receive advertisements for this paper. Estimates furnished free upon application.

Send two stamps for our Advertisers' Manual.

THE COOK'S FRIEND BAKING POWDER

Has become a HOUSEHOLD WORD in the land, and is a HOUSEHOLD NECESSITY

every family where Economy and Health are studied. It is used for raising all kinds of Bread, Rolls, Pastry cakes, Griddle Cakes, &c., &c., and a small quantity used in Pie Crust, Puddings, or other Pastry, will save half the usual shortening, and make the food more digestible.

THE COOK'S FRIEND

SAVES TIME, IT SAVES TEMPER, IT SAVES MONEY.

For sale by storekeepers throughout the Dominion, and wholesale by the manufacturer. W. D. McLAREN, UNION MILLS, 55 College Street.

LIEBIG COMPANY'S

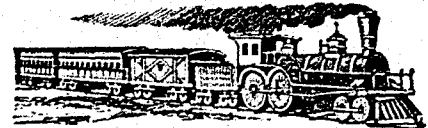


EXTRACT OF MEAT

FINEST AND CHEAPEST MEAT-FLAVOURING STOCK FOR SOUPS, MADE DISHES & SAUCES.

"Is a success and boon for which Nations should feel grateful."—See Medical Press, Lancet, Brit. Med. Jour., &c. "Consumption in England increased tenfold in ten years." To be had of all Storekeepers, Grocers and Chemists. Sole Agents for Canada and the United States (wholesale only) C. David & Co., 43, Mark Lane, London, England.

CAUTION.—Genuine ONLY with fac-simile of Baron Liebig's Signature in Blue Ink across Label.



C. M. O. AND O. RAILWAY.

Change of Time.

COMMENCING ON

Wednesday, June 23, 1880.

Trains will run as follows:

Table with columns: MIXED, MAIL, EXPRESS. Rows include: Leave Hochelaga for Hull, Arrive at Hull, Leave Hull for Hochelaga, Arrive at Hochelaga, Leave Hochelaga for Quebec, Arrive at Quebec, Leave Quebec for Hochelaga, Arrive at Hochelaga, Leave Hochelaga for St. Jerome, Arrive at St. Jerome, Leave St. Jerome for Hochelaga, Arrive at Hochelaga.

(Local trains between Hull and Aylmer.) Trains leave Mile-End Station Seven Minutes Later. Magnificent Palace Cars on all Passenger Trains, and Elegant Sleeping Cars on Night Trains. Trains to and from Ottawa connect with Trains to and from Quebec. Sunday Trains leave Montreal and Quebec at 4 p.m. All Trains Run by Montreal Time. GENERAL OFFICE, 13 Place d'Armes Square. TICKET OFFICES, 13 Place d'Armes, and 202 St. James Street, Montreal. Opposite ST. LOUIS HOTEL, Quebec. L. A. SENECA, Gen'l Sup't.

THE BURLAND LITHOGRAPHIC COMPANY (LIMITED)

CAPITAL \$200,000, GENERAL

Engravers, Lithographers, Printers

AND PUBLISHERS, 3, 5, 7, 9 & 11 BLEURY STREET, MONTREAL.

THIS ESTABLISHMENT has a capital equal to all the other Lithographic firms in the country, and is the largest and most complete Establishment of the kind in the Dominion of Canada, possessing all the latest improvements in machinery and appliances, comprising:—

- 12 POWER PRESSES
1 PATENT LABEL GLOSSING MACHINE.
1 STEAM POWER ELECTRIC MACHINE,
4 PHOTOGRAPHING MACHINES,
2 PHOTO-ENGRAVING MACHINES,
Also CUTTING, PERFORATING, NUMBERING, EM-BROSSING, COPPER PLATE PRINTING and all other Machinery required in a first class business.

All kinds of ENGRAVING, LITHOGRAPHING, ELECTROTYPING and TYPE PRINTING executed in THE BEST STYLE

AND AT MODERATE PRICES.

PHOTO-ENGRAVING and LITHOGRAPHING from pen and ink drawings a SPECIALTY.

The Company are also Proprietors and Publishers of the CANADIAN ILLUSTRATED NEWS, L'OPINION PUBLIQUE, and SCIENTIFIC CANADIAN.

A large staff of Artists, Engravers, and Skilled Workmen in every Department. Orders by mail attended to with Punctuality; and prices the same as if given personally.

G. B. BURLAND, MANAGER.

250 MOTTOES and 100 Illustrated Escort & Train Cards, all for 15c. West & Co., Westville Conn.

40 Elegant Cards, All Chromo, Motto and Glass Name in Gold and Jet, 15c. West & Co., Westville, Conn

CONTRACTS FOR ADVERTISING IN THE Canadian Illustrated News MAY BE MADE AT OUR LOWEST RATES WITH MR. E. DUNCAN SNIFFIN, ASTOR HOUSE OFFICES NEW YORK.

The Scientific Canadian

MECHANICS' MAGAZINE AND PATENT OFFICE RECORD

A MONTHLY JOURNAL

Devoted to the advancement and diffusion of Practical Science, and the Education of Mechanics.

THE ONLY SCIENTIFIC AND MECHANICAL PAPER PUBLISHED IN THE DOMINION.

PUBLISHED BY THE BURLAND LITHOGRAPHIC CO.

OFFICES OF PUBLICATION, 5 and 7 Bleury Street, Montreal.

G. B. BURLAND General Manager.

J. N. BOXER, ARCHITECT & CIVIL ENGINEER, Editor

TERMS:

One copy, one year, including postage, \$2.00 One copy, six months, including postage, 1.10 Subscriptions to be paid in ADVANCE.

The following are our advertising rates:—For one monthly insertion, 10 cts. per line; for three months, 3 cts. per line; for six months, 2 cts. per line; for one year, 1.50 cts. per line; one page of Illustration, including one column description, \$30; half-page of Illustration, including half column description, \$20; quarter-page of Illustration, including quarter column description, \$10. 10 per cent. off on cash payments.

INVENTIONS AND MACHINERY, &c., or other matter of an original, useful, and instructive character, and suitable for subject matter in the columns of the MAGAZINE, and not as an advertisement, will be illustrated at very reduced rates.

REMITTING MONEY.—All remittances of money should be in the form of postal-orders. When these are not available, send money by registered letters, checks or drafts, payable to our order. We can only undertake to become responsible for money when sent in either of the above ways.

This journal is the only Scientific and Mechanical Monthly published in Canada, and its value as an advertising medium for all matters connected with our Manufactories, Foundries, and Machine Shops, and particularly to Inventors, is therefore apparent.

\$5 to \$20 per day at home. Samples worth \$5 free. Address STINSON & Co., Portland, Maine.

50 TORTOISE, Seroll, Wrenth, Chromo, Motto and Floral Cards, 10c. U. S. Card Co., Northford, Ct.

British American

BANK NOTE COMPANY,

MONTREAL.

Incorporated by Letters Patent. Capital \$100,000.

General Engravers & Printers

Bank Notes, Bonds, Postage, Bill & Law Stamps, Revenue Stamps, Bills of Exchange,

DRAFTS, DEPOSIT RECEIPTS, Promissory Notes, &c., &c., Executed in the Best Style of Steel Plate Engraving.

Portraits a Specialty.

G. B. BURLAND, President & Manager.