

MUNICIPAL ENGINEERS, CONTRACTORS AND MATERIALS

DEBENTURES BOUGHT

Municipalities saved all possible trouble by applying to

G. A. STIMSON & CO.

Investment Dealers

24 and 26 King St. W. - TORONTO

ARTIFICIAL STONE PAVEMENTS

SIDEWALKS A SPECIALTY

CORPORATIONS Will do well to consider our work and prices before letting contracts

The Silica Barutic Stone Company of Ontario, Limited.

WALTER MILLS,
General Manager.

Head office:
INGERSOLL, ONT.

THE HERCULES CULVERT CO.

Manufacturers of

Portland Cement

Culvert Pipe

Culvert Arches

HOG-TROUGHS, CURBING, Etc., and GENERAL CONTRACTING and SUPERVISION of all CEMENT AND CONCRETE STRUCTURES. Guaranteeing permanence and satisfaction. For Prices, Estimates and Further Particulars write . . .

The Hercules Culvert Co. - HAMILTON

Paving Granite

Granite Sets for Street Paving. - CURBING cut to any shape ordered. - Fine Rich Colors for Building and Monumental Purposes.

Quarries, St. Philippe d'Argenteuil, P. Q.

Address all communications to

JOS. BRUNET - COTE DES NEIGES, MONTREAL

Flush Your Sewers with

THE MILLER AUTOMATIC SYPHON

(PATENTED)

Received HIGHEST AWARD at the World's Columbian Exposition for

- (1) SIMPLICITY OF CONSTRUCTION.
- (2) EFFECTIVENESS. (3) RELIABILITY.

Write for Prices and Particulars.

VICTOR HILL, General Agent,
Hewson Bldg. Box 245. NIAGARA FALLS, ONT

WILLIS CHIPMAN

Hon. Grad. McGill University.

M. Can. Soc. C.E. M. Am. Soc. C.E.

Mem. Am. W.W. Ass'n.

WATERWORKS, SEWERAGE WORKS, GAS WORKS, ELECTRIC LIGHT AND POWER PLANTS

Reports, Surveys, Construction, Valuations

103 BAY STREET - TORONTO

RODERICK J. PARKE

Consulting Electrical Engineer

**MUNICIPAL ELECTRIC LIGHTING
COMMERCIAL POWER INSTALLATIONS**

Isolated Electric Lighting and Power Plants for Manufacturers. Estimates, Specifications, Advice on Tenders, Valuating.

310 Temple Building - TORONTO, CANADA

VAUGHAN M. ROBERTS

Civil and Sanitary Engineer

Waterworks, Sewers, Electric Light,
Electric Railways.

Plans and Specifications prepared. - Work Supervised. - 18 Ontario Street,
ST. CATHARINES

W. T. ASHBRIDGE, C.E.

A. M. CAN. Soc. C.E.

609 Temple Building, - TORONTO

Special Attention given to

MUNICIPAL IMPROVEMENTS

Sewerage Works, Water Supply,
Pavements, Concrete Construction, Etc.

THE PHOENIX BRIDGE & IRON WORKS

MANUFACTURERS OF STAY BOLTS AND ALL KINDS OF RIVETS

STEEL AND IRON STRUCTURAL AND ARCHITECTURAL WORK

Beams, Channels, Angles and
Tees always in stock.

29 to 49 McGill Street,

P.O. Box 893.

MONTREAL

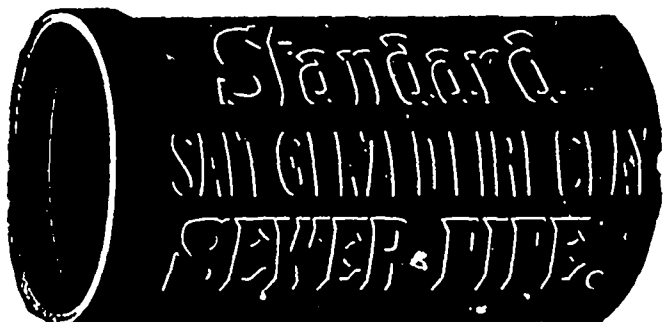
Prices on Application.

**THE HAMILTON AND TORONTO SEWER PIPE CO.
(LIMITED.)**

- FOR -
**SEWERS,
CULVERTS
AND
WATER PIPES.
INVERTS
For Brick Sewers**

Write for Discount

HEAD OFFICE AND FACTORY: HAMILTON, CANADA

**THE STANDARD DRAIN PIPE CO.
OF ST. JOHNS, P. Q., (LIMITED)**

Manufacturers of
**Salt-Glazed
Vitrified
SEWER
PIPES**

Double Strength
Railway Cul-
vert Pipes,
Inverts, Vents,

AND ALL KINDS OF FIRE CLAY GOODS

ENSIGN SILICA PORTLAND CEMENT

For Sidewalks, Pavements, Heavy Masonry and Concrete.

Write for our "ENSIGN" pamphlet, which gives tests, guarantee and other information.

THE KATHBUN COMPANY
DESERONTO, ONT.

**THE CADWELL SILEX STONE CO'Y
SILEX STONE**

**WALKS
CURBINGS } A SPECIALTY**

TO CORPORATIONS. - We can give you the benefit of our ten (10) years' experience in building our Silex Stone Walks.

G. W. Cadwell, Manager, Windsor, Ont.

Please mention the
CONTRACT RECORD when
corresponding with advertisers.

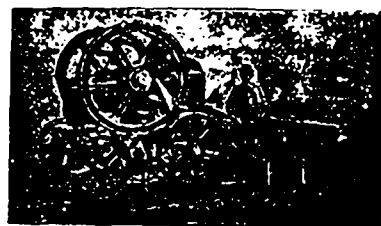
THE JENCKES MACHINE CO.

31 Lansdowne Street - SHERBROOKE, QUE.

**ORE AND STONE
CRUSHERS
HOISTING MACHINERY
RAILWAY SUPPLIES
BOILERS AND ENGINES**

Prices furnished on application

MARSH & HENTHORN,
BELLEVILLE, ONT.



Builders of

STONE AND ORE CRUSHERS
and Macadamizing Machinery.
Complete Plants Planned and Erected.
Write us for Catalogue of Crushing Machinery,
and Prices, stating requirements.