

TOURIST RESORTS OF THE ROCKIES.

BANFF, FIELD, GLACIER.

To those who have visited Banff the mention of the cave and basin, the falls, Tunnel mountain, the lakes in the clouds, etc., will bring to the memory recollections of delight-

grand Kicking Horse canyon. Previous to the construction of the Crow's Nest Pass Railway this was a busy town, as the freight for Fort Steele and other East Kootenay



C. P. R. Hotel, Banff, Alberta.

ful hours spent among these scenes. Banff has become well known the world over, not only for its hot baths, but for the beauty of its scenery. There is a small village here containing two general stores and a stock of curios, but as there are no mines or farming in the neighborhood the business done is necessarily small. The C. P. R. have erected a very fine hotel here, for the accommodation of tourists, which is kept open during the summer months. It was re-opened for this year a short time ago, and the number of visitors so far has exceeded that of any previous year. From this hotel a very fine view can be had of a portion of the park.

A short distance west of Banff we reach the summit of the Rocky mountains, near Laggan, which is the divisional point between the western and Pacific sections of the C. P. R., although the round house and other equipment pertaining to the divisional points are at Field. Between Laggan and Field the steepest grade on the line is encountered, requiring two and sometimes three engines on the east-bound passenger train. The scenery here is the grandest of any along this route.

At Field the Canadian Pacific Railway have a tourist hotel, which with the store of Carlin & Wyckoff and a restaurant, comprise the business places of the town.

Golden is the first town of importance west of Calgary. It is built on either side of the Kicking Horse river, in the broad valley of the Columbia river, lying between the Rocky and Selkirk mountain ranges, and is only half a mile from the

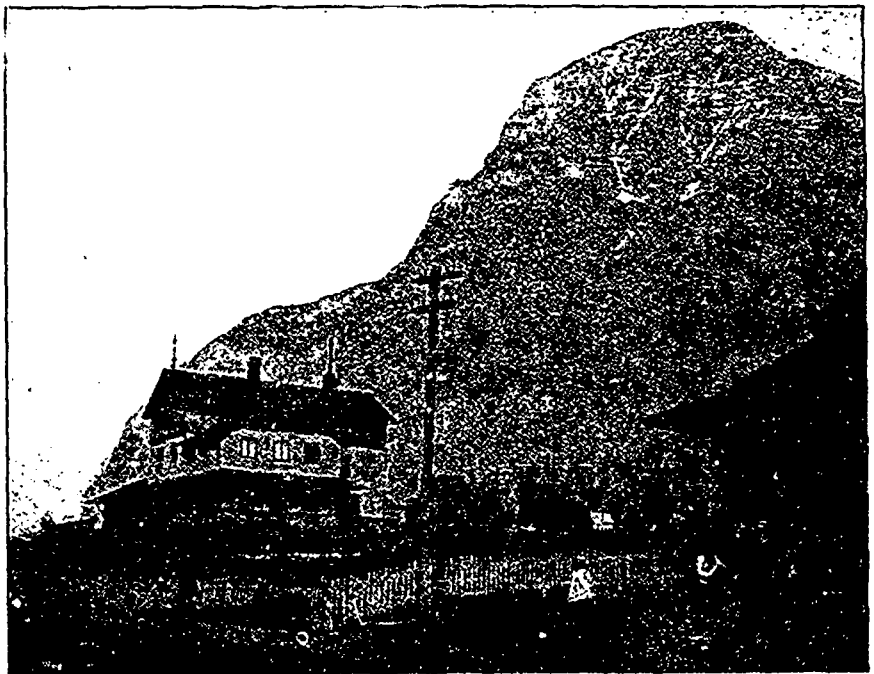
points came via this place and was forwarded during the summer months by steamer as far as Windermere on the Lower Columbia lake from where it was handled by freight teams,

which in the winter season covered the entire distance. The steamers still run between these points, as a good business is now being done in connection with the mining interests. Numerous gold, silver and copper properties have been located, along several of the creeks emptying into the Columbia and during the last year two or three small towns have sprung up. These claims are still in the development stage, and any shipments that have been sent out were, on account of the expense of handling, made simply as a test. Development work is being proceeded with, as those who are acquainted with this section feel satisfied that when a railway is secured, this portion of East Kootenay will become one of the best mining districts of British Columbia. Peterboro, one of the new towns here, has already made a name for itself in the business world.

Donald is 16 miles west of Golden in the same valley. Until a little over a year ago this was an important business town, but the removal of the railway shops and divisional point has left it without any means of support and the stores have all been closed. It may, however, again spring into life when the mines in the vicinity and in the Big Bend country reach the shipping stage.

At Glacier House the C. P. R. have a large hotel for the accommodation of tourists who desire to see the great glacier, which is within full view from the station and is easily reached either by horse or on foot. Immediately after reaching this station the "loop" is reached. This long line of trestle work which was rendered necessary to overcome the steep grade, is considered as one of the greatest engineering feats on the entire line.

The hotels, views of which are shown, have been established by an are conducted by the Canadian Pacific Railway Co., for the accommodation of tourists. This is a sufficient guarantee that every possible comfort and convenience will be provided. Since the opening of the great Canadian transcontinental railway, this region is annually receiving an increased number of visitors, for which it certainly offers great attractions, with its wonderful scenery and matchless climate.



Mount Stephen House, Field, B.C.