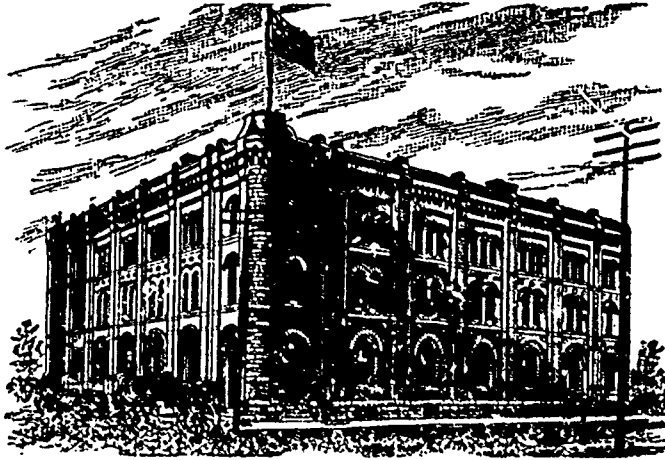


GOODS SOLD TO THE
TRADE ONLY.GOODS SOLD TO THE
TRADE ONLY.

G. F. & J. GALT,

DIRECT IMPORTERS
TEAS, SUGARS, WINES, LIQUORS and GENERAL GROCERIES
CORNER PRINCESS AND BANNATYNE STREETS, WINNIPEG, MANITOBA.

JOHN PARSONS.

W. J. PARSONS.

R. A. ROGERS.

THE PARSONS PRODUCE CO.,

R. A. ROGERS, Manager.

—WHOLESALE PACKERS AND JOBBERS OF—

**Fancy Dairy and Creamery Butter, Eggs, Apples,
AND DRESSED POULTRY.**

GENERAL COMMISSION MERCHANTS.

175 Main Street, Cauchon Block,
Telephone 620.

Winnipeg, Man.

REFERENCES: Imperial Bank of Canada, Winnipeg, Man. and Parkhill Banking Co., Parkhill, Ont.

British Columbia Trade Letter

(SPECIAL CORRESPONDENCE.)

VANCOUVER, July 27,—Heat! It is not often residents of the coast have to complain of not being able to sleep at night on account of the heat, but that has been the experience of last week, and the warm spell still continues. It is decidedly good for fruit and the harvesting of crops which is now under way and nobody complains. Business in all lines throughout the province is good, and the volume of shipments is large.

The Empress of India from Japan and the Taichow from San Francisco arrived heavily laden, and a tea ship from China; while local and coast trade is excellent. The best of the lumber trade so far as foreign demand is concerned is about over owing to general dullness in the world's market. The disturbances in South America have disorganized the usually good trade of that country, and the other markets are not brisk as usual.

Since last writing arrangements for the Westminster tramway and the extension of the Vancouver system have been pushed and both are expected to be completed in a short space of time. Work is about to start on the Chilliwack railway, while traffic arrangements are being completed on the Columbia & Kootenay, and Shuswap & Okanagan.

Sealers are returning to Vancouver and Vic-

toria from the north, and the catches necessarily very limited. So far as can be learned most of the sealers have been warned off the sealing grounds and as a consequence heavy damages will be claimed from the Imperial government.

A good deal of interest is being manifested in the Toronto exhibit by the various parts of the province, and the cities are all going in for it with a will and the exhibit this year it is expected will be exceedingly large.

Local and imported fruit is coming in freely, the shipments being heavy. Local fruit was somewhat damaged by the late cold spring, but quantity and quality on the whole cannot be complained of. Vegetables are in good supply and fairly reasonable. New hay is on the market. Altogether the crops, of fruit, grains and vegetables are highly satisfactory, although in some respects there have been disappointments.

Real estate generally is quiet. Mr. Robert Ward, of Victoria, while in England, floated another large loan company for British Columbia, the incorporation of which is gazetted. There is also announced at Victoria the establishment of a large beer brewery on a large scale, the contract for which it is understood has been let to a San Francisco man. There will be connected with it a malt house and distillery. This has an im-

C. H. Mahon & Co.

BOOTS AND SHOES,

WINNIPEG, - MANITOBA.

Mitts, Moccasins, Felts and Rubbers.

—A FULL ASSORTMENT OF—

TENNIS AND LACROSSE SHOES,

—AND—

OXFORD TIES.

HUTCHISON, DIGNUM & NISBET,

Manufacturers' Agents and Merchants,
LINENS, IMPORTED WOOLLENS AND TAILOR-
TRIMMINGS. SELECT CANADIAN TWEEDS
55 Front St. West, - TORONTO.

—SOLE AGENTS IN CANADA FOR—
J. N. Richardson, Sons & Owden, Belfast, - Linen Goods
Currie, Lee & Gawn, Hawick, - Scotch Tweeds
R. Fringlo & Son, Hawick, - Scotch Underwear
David Moseley & Son, Manchester, - Rubber Goods
J. S. Manton & Co., Birmingham, - Buttons

Stock of Linens, Tweeds and Trimmings
always on hand.

R. B. HUTCHISON. Ed. J. DIGNUM. R. A. NISBET
(Late Mills & Hutchison)

portant bearing on the interests of the province. Besides the large imports of foreign beer, practically all the malt consumed in the British Columbia breweries is imported, some one million pounds per annum, which represents in round figures 50,000 bushels of barley. Fifteen hundred or two thousand acres of land in British Columbia would grow barley sufficient for present malting purposes, and speaking of the Okanagan district, which has eminent capabilities to grow barley to malt, the supply for which must come from San Francisco and pay duty, barley as a crop there ought to pay as well as wheat at 60 and 65c per bushel, and thus add a new industry and retain for ourselves the benefits accruing therefrom. With railway facilities established in the interior this is now possible. In this connection it may be stated that the arrangements for the consolidation by a syndicate of all the breweries in British Columbia at one time thought to have fallen through, is likely to be consummated after all. Prices are as follows:—

Flour and Grain—Manitoba patents \$6.30; Manitoba bakers, \$6.25; Oregon flour, \$5.75 to 6.25; oatmeal and cornmeal, \$3.80; rolled oats, \$5; shorts, \$2.6; bran, \$2.4; wheat, \$3.5 to \$3.8; hay, \$1.5 to \$1.6; chopped feed, \$3.5 to \$4.0; oats, choice, \$4.5, do. common, \$4.0 per ton

Sugar—Granulated, 5½c per lb; yellow, 5c; cubo, 6½c; syrup, 5½c.

Meats—Dry salt, 12c; roll bacon, 12c; break fast bacon, 14c; backs, 13½c; hams, 15c; lard, in tubs, 12c; in pails, 12½c; in tins, 13c; lard compound, 12c.

Butter—Creamery 25c; dairy, 15 to 20.

Eggs—19c.

Cheese—12½ to 13c

Fruit—Apples and pears, \$1.25 to \$1.50 per box. Bartlett pears, \$3.25; peaches, apricots, and plums, \$1.40 per box; prunes, \$1.95, oranges at \$4; California lemons \$3.75; Sicilian \$8.