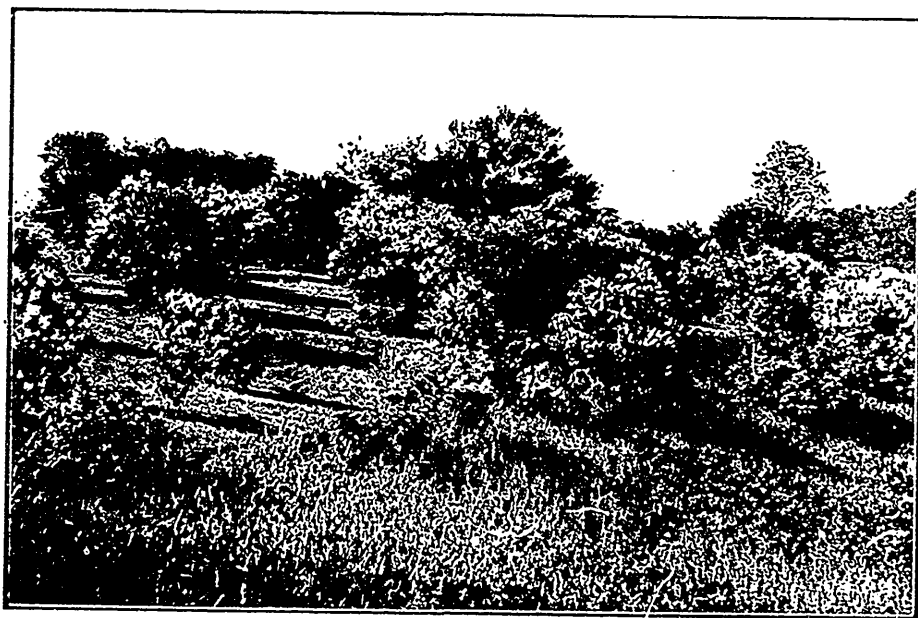


of the Capital. The site might be compared to a quadrangle of some four hundred acres, the northeastern corner dropping rapidly towards the city, the rest, a slightly undulated plain, sloping away to the south. On the eastern side the farm follows the course of the Rideau Canal, presenting a steep grassy bank except where small landslides, caused by heavy rains, have disclosed the clayey sub-soil, which, by the way, explains the humidity of the soil above. But do not imagine that the Dominion Government chose the best piece of ground around Ottawa for its



A Corner of the Farm.

farm. On the contrary, the soil is quite typical of the Trenton geological period to which the greater part of Ontario belongs.

No one should spend any time in Ottawa without visiting the Experimental Farm. It may be reached by the beautiful Rideau Canal Driveway or by electric car. One will always find some well-informed gentleman there to show him around. The farm is indeed a park, with shady avenues and splendid side-walks. The summit of the ridge, upon which it stands, is occupied by the pretty homes of some of the farm officials. Here, too, are the laboratories, the Administration Building, and also