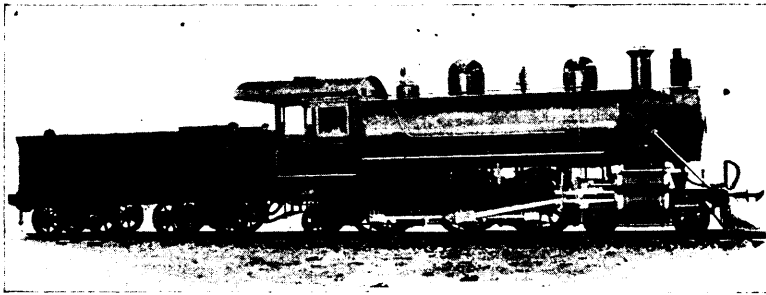


BALDWIN LOCOMOTIVE WORKS.

SINGLE EXPANSION AND COMPOUND LOCOMOTIVES.

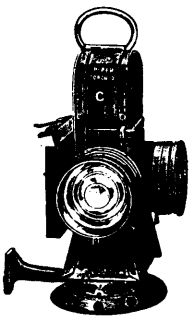


Broad and Narrow Gauge Locomotives; Mine and Furnace Locomotives Compressed Air Locomotives; Steam Cars and Tramway Locomotives; Plantation Locomotives; Oil Burning Locomotives.

Adapted to every variety of service, and built accurately to gauges and templates after standard designs or to railroad companies' drawings. Like parts of different engines of same class perfectly interchangeable.

Electric Locomotives and Electric Car Trucks with Westinghouse Motors.

Burnham, Williams, & Co., - - Philadelphia, Pa., U.S.A.



Standard Classification Lamp, Registered.

The N. L. Piper Railway Supply Co.

LIMITED

314 Front St. West, - - TORONTO

MANUFACTURERS OF

RAILWAY LAMPS AND SIGNALS

DEALERS IN

CHIMNEYS, WICK, BURNERS, ETC.

Eugene F. Phillips Electrical Works, Limited,

MONTREAL, CANADA.

BARE AND INSULATED ELECTRIC WIRE

Electric Light Line Wire, Incandescent and Flexible Cords,

RAILWAY FEEDER AND TROLLEY WIRE

Americanite, Magnet, Office and Annunciator Wires,
Cables for Aerial and Underground Use.

WE SUPPLY A FULL LINE OF MACHINE TOOLS

Such as are used in the most modern locomotive works to-day, consisting of Frame Slotting Machines, Frame Planing Machines, Frame Drilling Machines, Side Rod Milling Machines, Connecting Rod Planers, Vertical Milling Machines, Rod Boring Machines, Double Driving Wheel Lathes up to 90", Car Wheel Lathes, Quartering Machines, Hydraulic Wheel Presses, Cylinder Planers, Cylinder Boring Machines, Car Wheel Boring Machines, Axle Lathes Single, Axle Lathes Double, Double Cutting Off and Centering Machines, Iron Planers 84" square, Engine Lathes 75" swing, Radial Drilling Machines 9' arm, Vertical Boring and Turning Mills 18", and a complete equipment of smaller tools.

These machines are the product of over 40 years' experience. If interested, write for special illustrations and circulars to

THE JOHN BERTRAM & SONS CO., Limited, DUNDAS, ONT.

C. P. R. LANDS.

The Canadian Pacific Railway lands consist of the odd-numbered sections along the Main Line and Branches, and in Northern Alberta and the Lake Dauphin District. The Railway Lands are for sale at the various agencies of the company in Manitoba and the North-West Territories at the following prices:

Lands in Manitoba and Assiniboia average \$3 to \$6 an acre.

Lands in Alberta and Saskatchewan with the exception of some special locations where prices range from \$3.50 to \$5.00 per acre, generally \$3.00 per acre.

TERMS OF PAYMENT.

In the case of an actual settler who goes into residence upon and cultivates the land, the aggregate amount of purchase money and interest is divided into ten instalments, as shown in the table below; the first to be paid at the time of purchase, the second two years from date of purchase, and the remainder annually thereafter.

160 acres at \$3.00 per acre, 1st instalment \$71.90, and nine equal instalments of \$60.
160 acres at \$3.50 per acre, 1st instalment \$83.90, and nine equal instalments of \$70.
160 acres at \$4.00 per acre, 1st instalment \$95.85, and nine equal instalments of \$80.
160 acres at \$4.50 per acre, 1st instalment \$107.85, and nine equal instalments of \$90.
160 acres at \$5.00 per acre, 1st instalment \$119.85, and nine equal instalments of \$100.
160 acres at \$5.50 per acre, 1st instalment \$131.80, and nine equal instalments of \$110.
160 acres at \$6.00 per acre, 1st instalment \$143.80, and nine equal instalments of \$120.

Purchasers who do not undertake to go into residence on the land within one year from date of purchase are required to pay one-sixth of the purchase money down and the balance in five equal annual instalments with interest at the rate of six per cent. per annum.

DISCOUNT FOR CASH. If land is paid for in full at time of purchase, a reduction from price will be allowed equal to ten per cent. of the amount paid in excess of the usual cash instalment.

Interest at six per cent. will be charged on overdue instalments.

Write for maps and full particulars.

F. T. GRIFFIN, - Land Commissioner,

WINNIPEG.

Edward L. Drewry

REDWOOD BREWERY,

Winnipeg, Manitoba

Fine

ALES, EXTRA PORTER

... AND ...

PREMIUM LAGER.

Most Extensive and Complete Brewery and Malthouses in Western Canada.

CHOICE MALT FOR SALE.

Manufacturer of the Celebrated

Colden Key Brand . . . AERATED WATERS.

TORONTO ENGRAVING CO.
DESIGNERS, ENGRAVERS,
ELECTROTYPERS.
92 BAY ST.