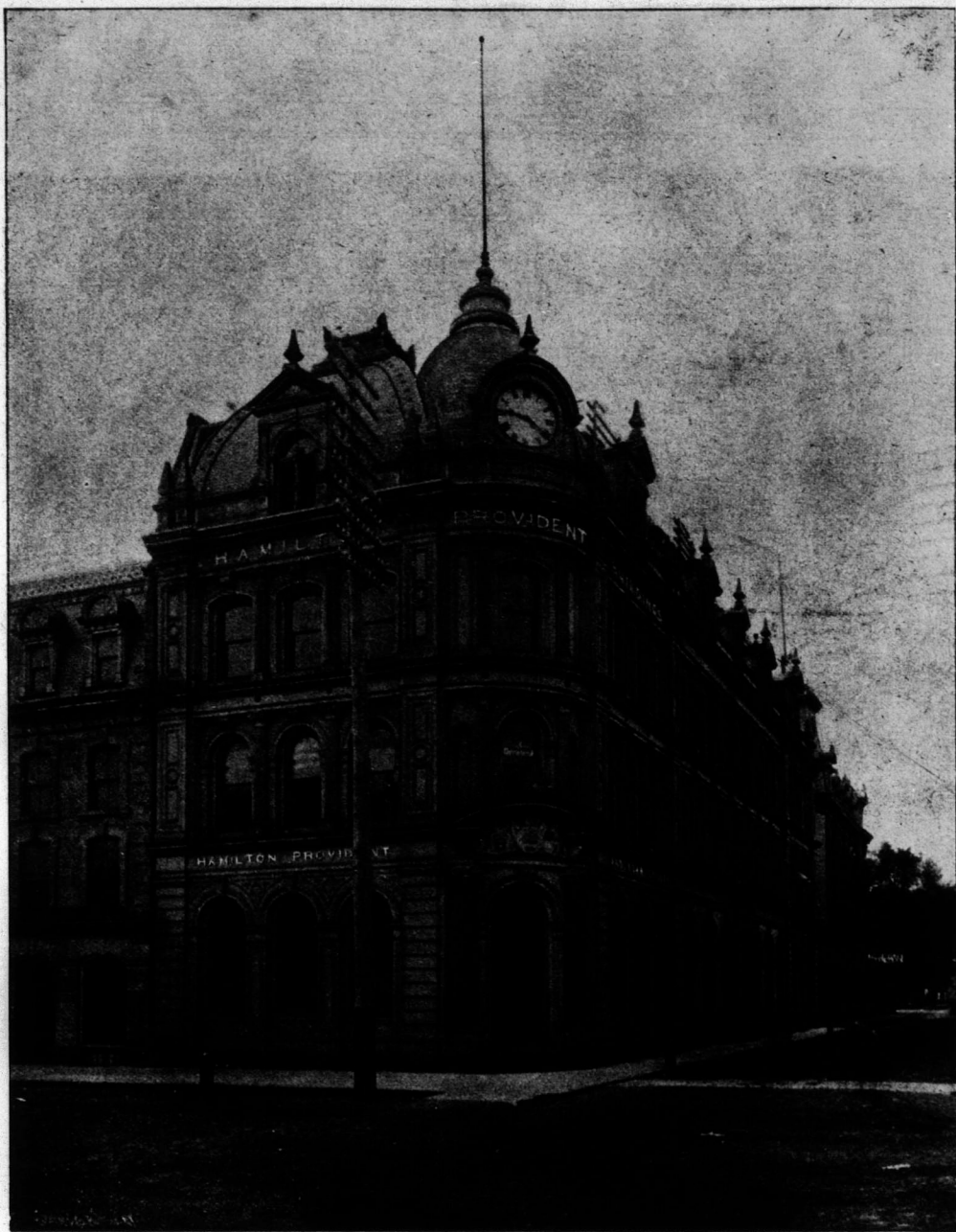


## The Hamilton Provident and Loan Society

PAID-UP CAPITAL, \$1,100,000.

INCORPORATED 1871.  
RESERVE FUND, \$490,000.

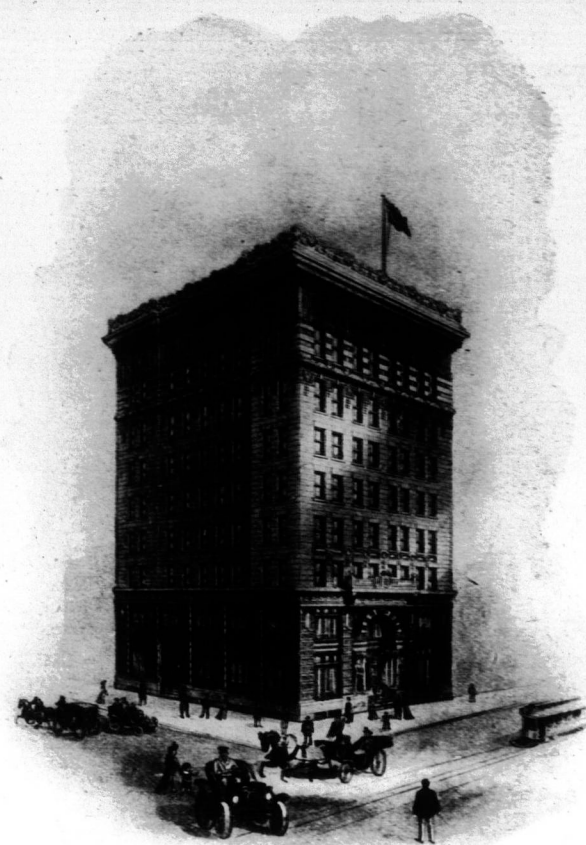
TOTAL ASSETS, \$3,956,322.



DEPOSITS RECEIVED of \$1.00 and upwards. 3½% Interest allowed, compounded half-yearly.  
4% Debentures issued for one or more years.  
Call at Office, COR. OF KING AND HUGHSON STREETS, HAMILTON.

## Federal Life Assurance Co.

HEAD OFFICE, HAMILTON, CANADA



A Canadian  
Company  
Confining the  
Investment of  
Its Assets to  
Canada

Writes Life and Investment Insurance  
in the most Attractive Forms

Capital and Assets, \$3,750,000  
Insurance in Force, \$19,000,000

DAVID DEXTER,  
President and Managing Director

The Management  
Is Progressive  
While carefully  
Conserving the  
Interests of  
Policyholders

# BANK OF HAMILTON

HEAD OFFICE, HAMILTON, ONTARIO

Paid-up Capital, \$2,500,000

Reserve, \$2,500,000

Total Assets, \$33,000,000

### DIRECTORS:

HON. WM. GIBSON, President; J. TURNBULL, Vice-President and General Manager; C. A. BIRGE, JOHN PROCTOR, GEORGE RUTHERFORD, HON. J. S. HENDRIE, C. C. DALTON (Toronto)

H. M. WATSON, Assistant General Manager and Superintendent of Branches

### BRANCHES:

#### ONTARIO

Ancaster  
Attwood  
Beamsville  
Berlin  
Blyth  
Brantford  
" East End Branch  
Chesley  
Delhi  
Dundalk  
Dundas  
Dunnville  
Fordwich  
Georgetown  
Gorrie  
Grimsby  
Hagersville  
Hamilton  
" Deering Branch  
" East End Branch  
" North End Branch  
" West End Branch  
Jarvis  
Listowel  
Lucknow

#### ONTARIO—Continued

Midland  
Milton  
Milverton  
Mitchell  
Moorefield  
Neustadt  
New Hamburg  
Niagara Falls  
Niagara Falls South  
Orangeville  
Owen Sound  
Palmerston  
Port Elgin  
Port Rowan  
Princeton  
Ripley  
Selkirk  
Simcoe  
Southampton  
Teeswater  
Toronto  
" College and Ossington  
Branch  
" Queen and Spadina Br.  
" Yonge and Gould Br.



### BRANCHES:

#### ONTARIO—Continued

Toronto Junction  
Wingham  
Wroxeter

#### MANITOBA, ALBERTA AND SASKATCHEWAN

Abernethy, Sask.  
Battleford, Sask.  
Bradwardine, Man.  
Brandon, Man.  
Carberry, Man.  
Carievale, Sask.  
Carman, Man.  
Caron, Sask.  
Edmonton, Alta.  
Elm Creek, Man.  
Francis, Sask.  
Gladstone, Man.  
Hamiota, Man.  
Indian Head, Sask.  
Kenton, Man.  
Killarney, Man.  
La Riviere, Man.  
Manitou, Man.  
Mather, Man.

#### MANITOBA, ALBERTA AND SASKATCHEWAN—Continued

Melfort, Sask.  
Miami, Man.  
Minnedosa, Man.  
Moose Jaw, Sask.  
Morden, Man.  
Mortlach, Sask.  
Nanton, Alta.  
Pilot Mound, Man.  
Roland, Man.  
Saint Albert, Alta.  
Saskatoon, Sask.  
Snowflake, Man.  
Stonewall, Man.  
Swan Lake, Man.  
Tuxford, Sask.  
Winkler, Man.  
Winnipeg, Man.  
" Grain Exch. Branch

#### BRITISH COLUMBIA

Fernie  
Kamloops  
Salmon Arm  
Vancouver  
" Cedar Cove Branch

Correspondents in Great Britain—National Provincial Bank of England, Limited

### CORRESPONDENTS IN UNITED STATES

NEW YORK—Hanover National Bank  
Fourth National Bank  
BOSTON—International Trust Company

BUFFALO—Marine National Bank  
CHICAGO—Continental National Bank  
First National Bank

DETROIT—Old Detroit National Bank  
KANSAS CITY—National Bank of Commerce  
PHILADELPHIA—Merchants National Bank

ST. LOUIS—Third National Bank  
SAN FRANCISCO—Crocker National Bank  
PITTSBURGH—Mellon National Bank

COLLECTIONS EFFECTED IN ALL PARTS OF CANADA PROMPTLY AND CHEAPLY. CORRESPONDENCE SOLICITED. SAVINGS BANKS AT ALL OFFICES. INTEREST PAID QUARTERLY.