

In other portions there are numerous uterine glands, the majority of which are dilated. Some lie in direct contact with the muscle. Others are separated from it by a small amount of stroma. A most interesting picture is noted in some places, namely, that the bunches of uterine glands are surrounded by a circular layer of myomatous

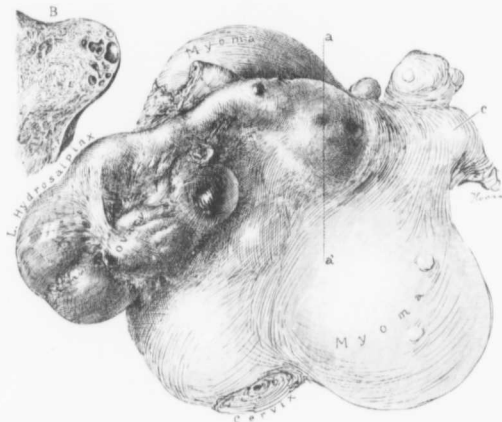


FIG. 65.—ADENOMYOMA OF BOTH UTERINE HORNS; DISCRETE MYOMATA; DIFFUSE ADENOMYOMA OF THE UTERUS. ( $\frac{1}{4}$  natural size.)

C. H. I., No. 1517. Gyn.-Path. No. 10,669. Occupying the uterus are several myomatous nodules. The left tube is the seat of a hydrosalpinx; it is firmly fixed to the ovary and to the surface of the uterus. At the left uterine horn is a definite thickening. This area appeared cystic and on making an incision from *a* to *a'* the picture in *B* was found. The cyst spaces were irregular in form and varied from 1 to 5 mm. in diameter. A similar and smaller cystic tumor was present at the right uterine horn, as indicated by *c*. This on examination presented the same picture as did that of the left. On histological examination the thickenings in both horns were found to be due to the presence of adenomyoma. The glands were of the uterine type and in many places were surrounded by the characteristic stroma of the mucosa. Near *c* was a typical miniature uterine cavity. The uterine walls were the seat of a diffuse adenomyoma.

tissue. Riddling the mucosa everywhere at the uterine horn are uterine glands occurring singly or in bunches. Near the peritoneal surface, as noted macroscopically, some of the glands reach 2 mm. or more in diameter. The gland cavities in places contain desquamated epithelium and the epithelium has taken up blood-pigment