

G. F. STEPHENS & CO.

—MANUFACTURERS OF—

Stephens' Pure Liquid Colors—Various Shades for Interior and Exterior House Painting.

Stephens' Prepared Carriage Paints—In Scarlet, Black and Maroon. These Paints dry with a Rich Gloss and do not require Varnishing.

Stephens' Elastic Enamel—For Household Decorations such as Tables, Fancy Chairs, &c., in a large number of delicate shades.

Stephens' Pure Oxide Paints—(Almost everlasting)—For Elevators, Granaries, Roofs and all Rough Surfaces exposed to the Weather.

—IMPORTERS AND JOBBERS OF—

Window Glass—Ordinary Glazing and Crystal Sheet. Single and Double Strength.

Heavy Polished Plate—Sizes in Stock from 44 to 96 inches Wide.

Ornamental Glass—In almost Endless Variety.

A full Stock of Painters' Supplies including Dry Colors, White Lead, Varnish, Brushes, Etc. Artists' Oil Colors and Brushes.

Plaster Paris, Plasterer's Hair, Portland Cement, Rosin, Pitch, Etc.

MARKET STREET EAST, WINNIPEG.

EARLY CLOSING.

The annual spring early closing agitation has been going on in Winnipeg during the past few weeks, and it has been more than usually lively this year. The clergymen have preached sermons upon the subject, street processions have been held, and meetings have been convened at which numerous resolutions have been passed, bearing upon every phase of the question.

It seems remarkable that so much difficulty should be experienced in securing the early closing of stores in Winnipeg, when it has been clearly shown that the people are almost unanimously in favor of the movement. Nearly all the merchants of the city claim to be in favor of early closing. The plea that it is necessary to keep open to accommodate laborers and mechanics has been knocked in the head by these people themselves, for they have taken up the agitation in favor of early closing, to assist the clerks. This annual rumpus over the closing of stores seems therefore altogether unnecessary. The common sense way to accomplish the end would seem to be for the leading merchants to close up their places of business at seven, or better still at six o'clock, regardless of what two or three small dealers may do. The state of public feeling upon the question is such that those who would undertake to close early would not lose anything, but rather the contrary, while those who would persist in keeping open would do themselves an injury. This plan of holding off until the signatures of all the dealers in a given branch of trade have been secured to an agreement to close at a stated hour, and then abandoning the agreement the first time it has been violated by an individual merchant, is not at all worthy of the merchants of a city like Winnipeg. Let the merchants who are in favor of early closing be independent and liberal enough to close up continuously at a reasonable hour, independent of any agreement to bind others, and they will be benefitting themselves and their employees, and putting an end to this periodical hubbub over early closing.

Montreal Journal of Commerce—“Bordeaux canned peas, crop of 1890, to arrive in June, are quoted at 75, 60, 45 and 40 francs for extra fines, fines, moyens and gros, respectively, in cases of 100 lb. tins, each, for choice packing. Indications point to a good crop, and prices may be shaded a little later on.”

Joseph Carman,

—WHOLESALE DEALER IN—

GREEN AND DRIED FRUITS, VEGETABLES, Creamery and Daily Butter, Eggs, Cheese, Comb Honey, &c.

Write for prices on Cans Potatoes. Consignments and Orders Solicited.

21 Alexander Street West, - - WINNIPEG.

The Barber & Ellis Co'y,

Nos. 43, 45, 47 and 49 Bay Street,

TORONTO, Ont.

Manufacturers of ACCOUNT BOOKS, ENVELOPES, PAPER BOXES.

Importers of all Grades of Staple Stationery.

—DEALERS IN—

PRINTERS' SUPPLIES,

BOOKBINDERS' MATERIALS AND

BOXMAKERS' REQUISITES.

Wm. Ewan & Son, WHOLESALE CLOTHIERS,

650 Craig St. MONTREAL.

Represented by J. McLEOD, HOLIDAY & Bro., Winnipeg, Man.

Robertson, Linton & Co

CORNER OF ST HELEN AND LEMOINE STS.,
MONTREAL.

Importers of British and Foreign Dry Goods, Canadian Tweeds, Cottons, Etc.

Complete set of Samples with J. N. ADAMS, Room 8, McIntyre Block, Winnipeg.

SAMUEL HOOPER, DEALER IN MONUMENTS, HEAD STONES, Mantle Piece, Grates, Etc. Special designs furnished on application. Corner Bathurst and Albert Streets, Winnipeg.

ROBINSON, LITTLE & CO.

—WHOLESALE—

DRY GOODS,

343 and 345 Richmond St.,

LONDON, Ont.

Complete range of Samples with Andrew Callender, McIntyre Block, Winnipeg.

J. F. EBY.

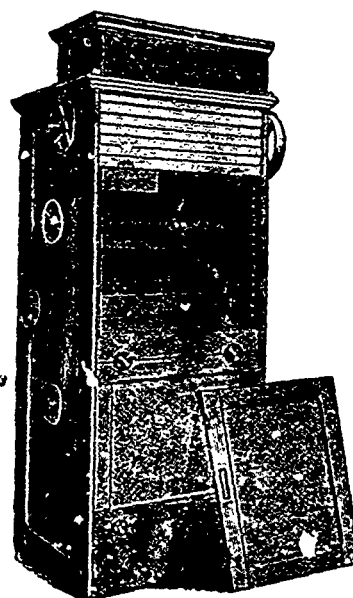
HUGH BLAIN.

Eby, Blain & Co. WHOLESALE GROCERS,

COR. FRONT AND SCOTT STS.,

TORONTO.

Represented in Manitoba and the Northwest Territories by JAMES DOWLER, 130 Donald Street, WINNIPEG.



BOYNTON GRAVITY SCALPER.
Can be seen in operation at the mills of Ogilvie Milling Company, Lake of the Woods Milling Company, Hudson's Bay Company, Portage Milling Company, Alexander, Kelley & Co., J. H. Fraser and all the leading mills in Minneapolis.

—APPLY TO—

JAMES PYE,

218 Third Avenue South,
Minneapolis, - Minn.