

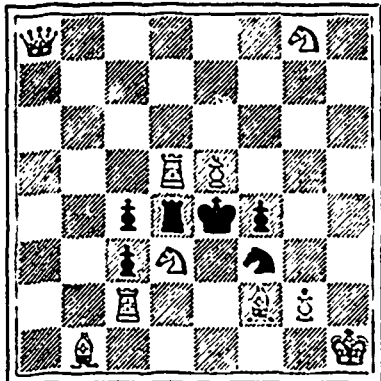
only a man has something remunerative to do in it. I had intended to have inflicted a little literary gossip on you, but I thought I ought first to give some little sketch of the place, and I find it has run into as much space as I imagine, you will care to devote to one screed. I hope to send you another with a week. With kind regards

Yours faithfully,

FRANC TIREUR.

CHESS.

PROBLEM No. 40.
From Jamaica Gleaner.
BLACK 6 pieces.



WHITE 10 pieces.

White to play and mate in 2 moves

GAME No 41.

GAME PLAYED AT CHICAGO, June 9th, 1890, between J. W. Showalter, of Kentucky, and Chas. J. Philips, of Chicago, and late of the Toronto Chess Club.

EVAMS GAMBIT DECLINED.

Showalter. Philips.

WHITE

BLACK.

- 1 P to K4
- 2 Kt to KB3
- 3 B to B4
- 4 P to QKt4
- 5 Castles
- 6 P to QB3
- 7 P to QR4
- 8 P to QR5
- 9 P to Q3
- 10 B takes B
- 11 Q to Kt3
- 12 Kt to Kt5
- 13 K to R1
- 14 Kt to R3
- 15 P to KB4
- 16 Kt to Q2
- 17 Kt to KB3
- 18 Kt to R4
- 19 QR takes B
- 20 Kt to B5
- 21 Kt to Q4
- 22 KR to B2
- 23 Kt to B2
- 24 Q takes Kt
- 25 Kt to Kt1
- 26 Kt to K2
- 27 P to Q4
- 28 P to Q5
- 29 P to QB4
- 30 Kt to KKt3
- 31 Kt to B5
- 32 P to QB5
- 33 P to Kt3
- 34 BP takes P
- 35 Q to B7 sq
- 36 Q takes QP
- 37 P takes R
- 38 QR to B2
- 39 P to B6
- 40 K to Kt1
- 41 Q to K6
- 42 R takes Kt
- 43 Resigns.—The Week.

3,340 variations. It may be had post free for 7s. 6d. stg. by addressing G. Reay, 12 Portland Street, Aberdeen, Scotland. Your solution to problem 186 is correct. Your solution to 185 is incorrect, as black could make a draw from where you leave it.

The play leading to a black draw in 185 from where you leave it is as follows, the position being black man 13, king 30; white man 12, king 23; black to move and draw:—

PROBLEM 186—The position was:

black men 1, 2, 5, 6, 7, 8, 12, 13, 18, 19; white men 15, 16, 21, 22, 25, 26, 27, 28, 29, 30; white to play and win.

26 23 12 19 22 17 25 4
19-26 15-10 13-22 white
30 14 6 15 wins.

GAME No 73—Corrected.

Mr. F. Hamilton says that Mr. Forbes (white) should have beat O'Hearn by the following play. At the 46th move as played the position was as follows:—black men 2, 6, 13, 14, king 25; white men 15, 19, 21, 30, king 8; white to play and win. Instead of 19 16 play.

15 11 8 15 15 22 19 16
25-22 14-18 6-10 25-30
11 7 30 25 22 18 27 12
3-11 22-29 29-25 w. wins.

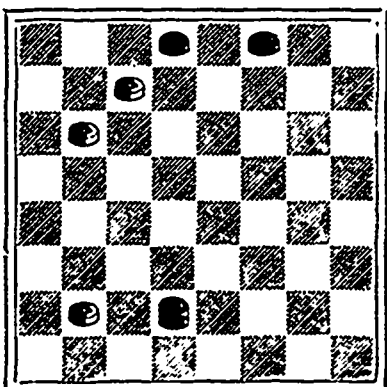
GAME 74—"EDINBURG."

Being the second game in the recent match between Wylie and Marr. Marr's move.

9-13 6-10 23-27 23-19
22 18 22 18 24 20 29 25
12-16 1-6 27-31 24-28
24 20 24 19 9 5 25 21
8-12 10-14 31-27 28-32
27 24 18 9 5 1 21 17
10-15 5-14 6-10 32-28
32 27 27 24 1 5 17 13
15-22 14-18 10-15 28-24
25 18 23 14 30 25 5 9
7-10 16-23 15-19 19-15
18 15 24 19 21 17 9 6
10-19 23-27 13-22 2-9
24 8 31 24 25 18 13 6
4-11 11-16 27-23 drawn.
26 22 20 11 18 14
3-7 7-23 19-24
28 24 14 9 14 10

PROBLEM No. 188.

Contributed by Mr. Kates of Montreal. Black men 2, 3, king 26.



White men 6, 9, 25.
Black to play and win.

Bermuda Bottled.

"You just go to Bermuda. If you do not I will not be responsible for the consequences." "But, doctor, I can afford neither the time nor the money." "Well, if that is impossible, try

SCOTT'S EMULSION

OF PURE NORWEGIAN COD LIVER OIL.

I sometimes call it Bermuda Bottled, and many cases of CONSUMPTION, Bronchitis, Cough or Severe Cold

I have CURED with it; and the advantage is that the most sensitive stomach can take it. Another thing which commends it is the stimulating properties of the Hypophosphites which it contains. You will find it for sale at your Druggist's, in Salmon wrapper. Be sure you get the genuine. SCOTT & BOWNE, Belleville.

BRITISH AMERICAN HOTEL.

Within Two Minutes Walk of Post Office.
DUNCAN BROUSSARD, - Proprietor,
HALIFAX, N. S.

LOI ON PARLE FRANCOISE.

THE MOST CENTRAL HOTEL IN THE CITY

ALBION HOTEL

JAMES GRANT, Proprietor.
22 SACKVILLE ST., HALIFAX.

Terms Moderate.

LYONS' HOTEL,

Opp. Railway Depot,

KENTVILLE, N. S.

DANIEL McLEOD, - Prop'r

DAVID ROCHE,

HOUSE, SHIP AND ORNAMENTAL PAINTER.

Importer and Dealer in English and American Paper Hangings and Decorations.

AGENT FOR G. & T. C. POTTER'S ENGLISH PAPER HANGINGS.

234-ARGYLE STREET-236
HALIFAX, N. S.

Branch at 15 Barrington Street.

PIANOS. ORGANS.

The Best Agencies, the Freshest and Largest Stock in the City.

CALL OR WRITE FOR PARTICULARS.

HALIFAX PIANO & ORGAN CO.

157 & 159 Hollis Street, Halifax.

WROUGHT IRON PIPE.

MESSRS. J. & C. HODGSON

Having appointed us SELLING AGENTS for their

WROUGHT IRON PIPE

for the Province of Nova Scotia and Prince Edward Island, we solicit orders

AT FACTORY PRICES.

We carry a Stock at our Warehouse for the convenience of Local Trade.

We also Represent

THE DODGE SPLIT PULLEY CO.

OF TORONTO, ONT.

Whose Pulleys are the Best and Most Economical ever offered to Mill Owners.

SEND FOR STOCK LISTS AND PRICES TO

WM. STAIRS, SON & MORROW,
HALIFAX, N. S.

DRAUGHTS-CHECKERS

TO CORRESPONDENTS.

AVARD, Chemogue.—One of the latest and best works published is "Robertson's Guide." It contains