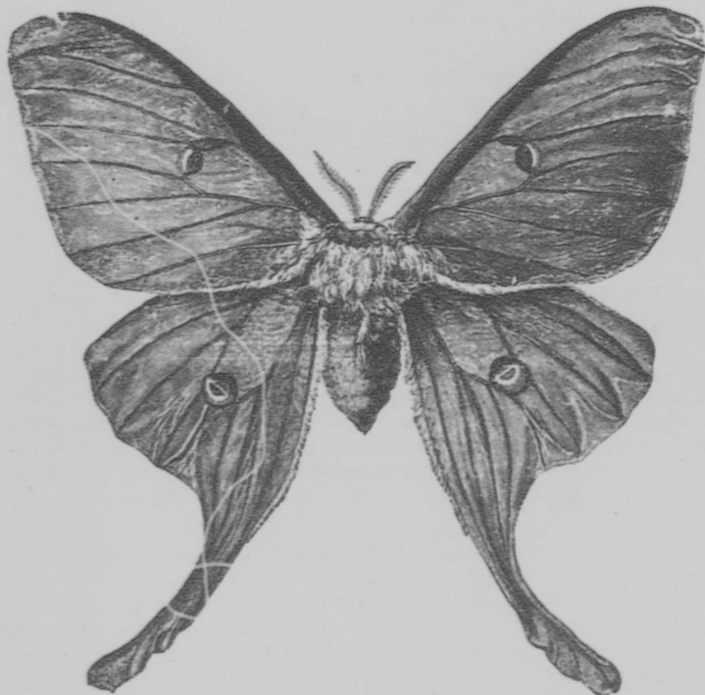


band, which is mostly purplish, to the wide border, of the same colour, along the upper edge of the wings. The outer margins of the wings are also edged in the centre with purple, or purplish-brown. The legs are of the same purplish colour.



THE LUNA MOTHS—SLIGHTLY REDUCED.

These moths may be found in Ontario and Quebec during the latter part of May and in early June. Specimens are often found in the day time, resting on the trunks of trees. They are active, however, only at night, when they are often attracted to the bright arc lights, especially those on the outskirts of towns and cities. Their flight is very graceful, and when seen flying around an electric light they are objects of much attraction, their long tails being very conspicuous in the bright light. Some seasons these moths are not uncommon. During the past few years many specimens have been sent to the Division of Entomology of the Dominion Experimental Farms, from widely separated localities. Almost all of the senders invariably make