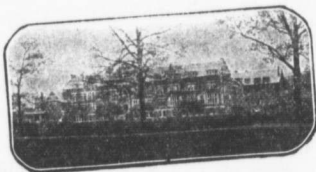


# St. Andrew's College

A Residential and Day School for Boys.

TORONTO



College Buildings from the south

Handsone new buildings, thoroughly modern in equipment. Large, airy and convenient. Situated in north Rosedale, Toronto's choicest residential district. The college property consists of 24 acres, providing ample play fields. **Separate Junior Residence. Upper and Lower School. Strong Staff, Thorough Instruction.** Boys prepared for the Universities and the Royal Military College.

Re-opened after Christmas, Jan. 9th, 1906.

REV. D. BRUCE MACDONALD, M.A., Principal

Write for Calendar

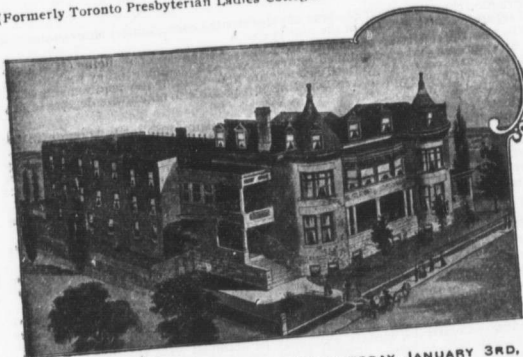
# Westminster College

(Formerly Toronto Presbyterian Ladies College)

OPPOSITE  
QUEEN'S PARK

BLOOR ST. WEST  
TORONTO

A RESIDENTIAL  
SCHOOL  
FOR GIRLS



A thorough training in all work for the Universities and for examinations in Music and Art. Affiliated with the Toronto Conservatory of Music. A Primary Department for junior pupils. Teachers of character and experience in every department.

SCHOOL RE-OPENS WEDNESDAY, JANUARY 3RD, 1906  
FOR CALENDAR AND OTHER INFORMATION, WRITE

REV. A. R. GREGORY, B.A.,  
PRINCIPAL

MRS. A. R. GREGORY,  
LADY PRINCIPAL

Please mention THE TEACHERS MONTHLY when writing to Advertisers