

SPARKS.

The new plant so far ordered by the Toronto Electric Light Company to replace that destroyed in their recent fire consists of 8 Brush arc machines of the latest type, having a capacity of 125 2,000 c.p. lamps each.

The recent fire at the power house of the Toronto Electric Light Co. was the occasion of an exceedingly prompt piece of shipping work from the factories of the Canadian General Electric Co. at Peterboro. A telephone message from Mr. J. J. Wright reached Mr. Stephens, general superintendent of the works, at 7.45 in the morning, and at 8.30 a car-load of arc apparatus, including a 125-light Brush machine, was on its way to Toronto, where it arrived in time to be put in service the same night.

Application is being made to the Ontario Legislature by Alexander H. Edwards, of Carleton Place; John B. Riley, of Plattsburg, N. Y., United States Consul General at Ottawa; Thomas Henry, of Montreal, and James Fowler, of Arnprior, for an Act to incorporate the Lanark County Electric Railway Company, with power to construct a line of railway from the town of Perth to the village of Lanark, and to extend the same to Olivers Ferry and Smiths Falls on the south, and to Almonte and Carleton Place on the north.

TENDERS WANTED
 A Weekly Journal of advance information and public works.
 The recognized medium for advertisements for "Tenders."
CANADIAN CONTRACT RECORD
 TORONTO

ATTENTION

Central Station Managers

A GOLDEN OPPORTUNITY

Are you desirous of purchasing Arc Lighting Machinery, Leather Belting, Water Wheels or Shafting? if so, you cannot afford to miss this opportunity. Owing to extensions necessitated at our generating station we are obliged to discard the above mentioned material.

Communicate with us at once for all information and particulars.
THE MONTMORENCY ELECTRIC POWER CO.,
 QUEBEC

See article page 25

WANTED

Position as Book-keeper or general office assistant, with gas and electric light company. Am a good stenographer also, and accustomed to reading meters and collecting. Three years experience. Good references. Address

KENNETH MCKENZIE,
 Chatham Gas Co.,
 Chatham, Ont.

ELECTRICAL ENGINEERS

No. 9 Chonneville St
 MONTREAL

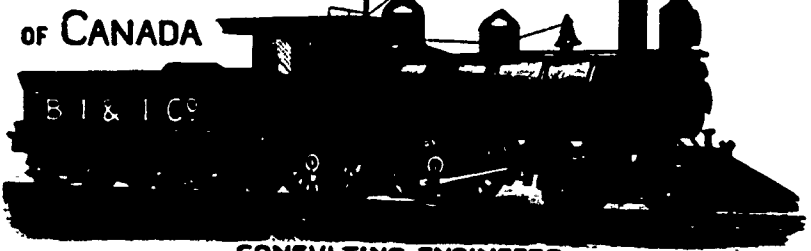
Fred. Thomson, late chief electrician of the Royal Electric Co

FRED. THOMSON & CO.
 Electrical Supplies of all Descriptions.
 Complete Plants Installed.....
 ARMATURES REWOUND
 Royal 1-H Arc a Specialty
 Dynamos and Motors Repaired

JOHN L. BLAIKIE Esq.
 PRES.

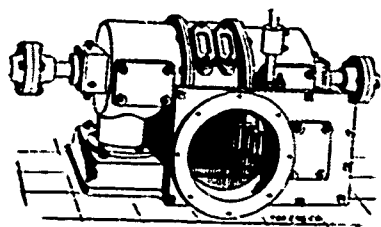
EW. RATHBUN Esq.
 VICE-PRES.

THE BOILER INSPECTION & INSURANCE CO.



CONSULTING ENGINEERS
 G.C. ROBB CHIEF ENGINEER
 A. FRASER SEC. TRES. HEAD OFFICE TORONTO

"Little Giant" Electrical Turbine

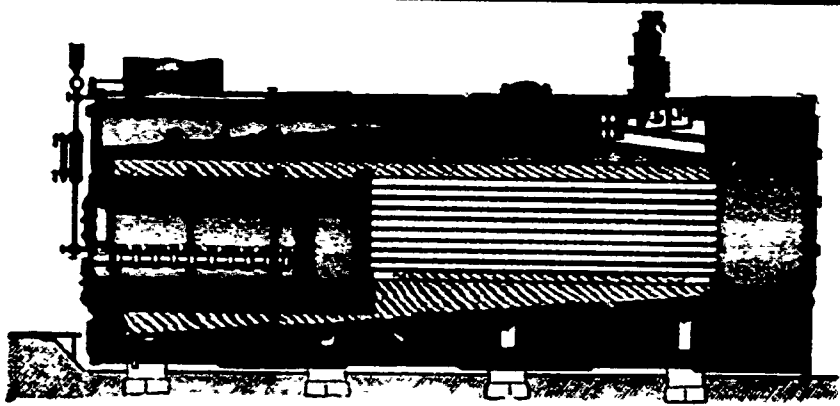


SPECIALLY ADAPTED FOR ELECTRIC WORK.
 Highest efficiency at partial gate opening.
 Steadiness of motion. Easily operated.
 Sensitive to the action of a governor.
 No end thrust on wheel shaft.
 Descriptive Circular Sent on Application
 Estimates furnished for complete power plants.
 Machine dressed gearing a specialty.

CORRESPONDENCE SOLICITED

J. C. WILSON & CO. - GLENORA, ONT.

253 Little Giants sold to the Canadian Government.



THE MONARCH ECONOMIC BOILER

IS PORTABLE—Has an outer casing and requires no brickwork. Leaves our shop mounted on skids ready for use.
SAVES FUEL—Some tests show a saving of 30 per cent. over a common brickset boiler. We guarantee at least 10 per cent.

Robb Engineering Co., Ltd - Amherst, N. S.
 WM. MCKAY, Seaforth, Ont., Travelling Agent.