

The Cow Stall Floor Problem

Cork Paving Brick

The Ideal Floor for Cow Stalls, Calf and Bull Pens, Horse Stalls, Sheep Pens and Piggeries.

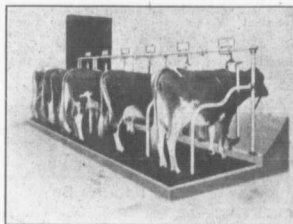
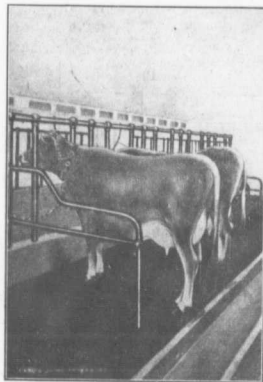
CORK PAVING BRICK, a material which solves the troublesome floor problem is now available. These bricks possess all the good features of both wood and cement, with none of their disadvantages.

Experience Has Shown Conclusively That:

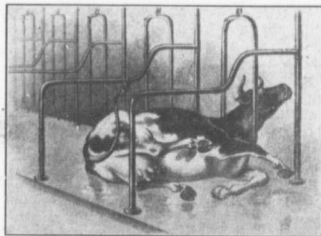
- First** They are always warm to the touch, summer or winter. Cork is naturally an excellent non-conductor of heat. Cork Brick floors are always warm enough for animals to stand or lie upon without heavy bedding or artificial heat. They tend to prevent garget, rheumatism and other diseases that are caused by cold and dampness.
- Second** They are resilient because both cork and asphalt are elastic substances. This removes the danger of hoof trouble and "bunchy" joints. For live stock being stabled on a Cork Brick floor is almost as comfortable as standing on turf.
- Third** They are never slippery, wet or dry. Cork Brick floors always give a firm, secure foothold. Why not ensure your cattle against slips and falls by installing them?
- Fourth** They are thoroughly sanitary. Just soak a Cork Brick in water, weighing it before you put it in. After being submerged for days you'll find that the moisture taken up will not amount to more than one and one-half or two per cent.
- Fifth** They are remarkably durable in service. You see Cork Brick have no grain like wood, and hence do not splinter; and are not rigid and brittle like cement, and therefore do not crumble. Installations under cattle, which have been in for more than three years, show no perceptible signs of wear.
- Sixth** They are easy to lay in old or new barns. No skilled mechanics are required. You can install Cork Brick yourself with very little trouble.
- Seventh** They are reasonable in cost, taking into account not merely first cost, but the cost in the long run, and considering their many advantages.

List of a Few Recent Installations

Sir Henry Pellatt, Toronto; Central Prison Farm, Guelph; Ontario Agricultural Farm, Guelph; Hospital for Feeble-minded, Orillia; McLean Farm, Pointe Claire; McDonald College, St. Annes; Stoney Croft Farm, St. Annes; J. F. Johnson, Esq., St. Annes; Department of Agriculture, Cap Rouge; Wilfred Guay, Esq., Stottsville; Senator Owen, Montreal; Shawinigan Water & Power Company, Magog; G. A. Gooderham, Esq., Clarkson; Lilleywood Farm, Muskoka.



No "bunchy" joints here



No accidents like this on Cork Brick Floors

Sample and Booklet, giving full information, mailed Free on request

THE KENT COMPANY, LIMITED
513 Canadian Express Building
MONTREAL, QUE.