

We Want You to Know Its Marked Superiority

strain.
ng facts
SHUTT

roduced
n. The
re freely
farmers
l condi-

a stone
d. The
ps back
lamage.
obstruc-
simply
FLOW.
st raise

can be
When
ropping
istance,
row-to-
e seven,

thus utilizing all the power without losing time.

When the land is loose, the drive wheels of the Traction Engine often sink several inches deep and the side of the engine tracks coming in the middle of a gang of two bottoms results in one bottom plowing deep while the other is simply scratching the surface. With our independent plows, each bottom adjusts itself automatically to the desired depth whether in depression or not.

Our bottoms and shares are very much heavier and stronger than other makes. We have found from actual field tests that it is necessary to have this increased weight to hold the bottoms in hard ground so they run level and turn a uniform furrow. This is a specially valuable feature of the COCKSHUTT GANG which farmers would do well to investigate.

These are only a few of the reasons why you should buy the COCKSHUTT ENGINE GANG in preference to any other

make. Another very important one is adjustments. The top of each standard is fitted with a set screw for adjusting the "suck" of the share and levelling up the bottoms. The bolt holes in the standard are slotted and by loosening the bolts and using the set screw each bottom can be adjusted to as fine a point as desired.

The gauge wheels can be put backward close to the shares for breaking, thus protecting them from stones, or can be transferred forward to make room for swivel rolling colters in stubble plowing.

We could take up several pages in this paper telling about the superiority of the COCKSHUTT ENGINE GANG, but everything is thoroughly explained in a handsome booklet which we have just issued.

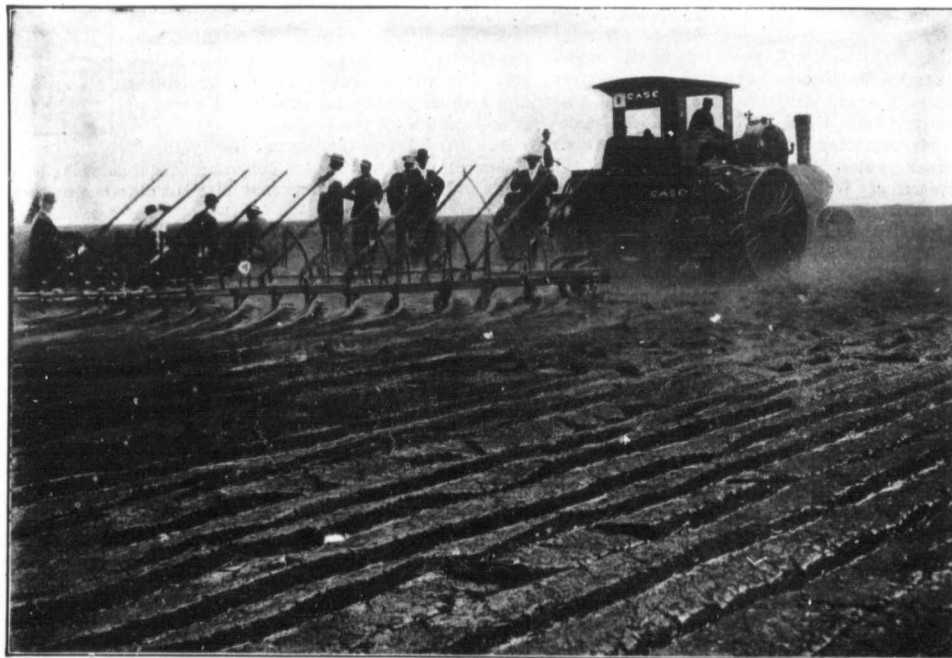
Don't miss it whatever you do. It shows a large number of splendid illustrations reproduced from actual photographs of COCKSHUTT ENGINE GANGS at work all over Western Canada, and hundreds of convincing testimonials which cannot

fail to impress you as to which ENGINE GANG is the best.

We will gladly send you a copy free on receipt of your name and address. Write us to-day—nearest address—or see a Cockshutt dealer.

It is best for intending buyers to see the COCKSHUTT ENGINE GANG and examine its various points of superiority. In the meantime get our handsome booklet about our ENGINE GANG. Many hundreds of practical farmers who have used the COCKSHUTT GANG have written to us testifying to its excellent working qualities.

We will be glad to send a free copy of this booklet to you. Send us your name and address—to nearest address, or SEE THE COCKSHUTT DEALER.



"Cockshutt Engine Gang in Winnipeg Exhibition Plowing Contest, 1910."

COCKSHUTT

FLOW
COMPANY
LIMITED

WINNIPEG

BRANDON

REGINA

SASKATOON

CALGARY

EDMONTON