

EATON'S DAILY STORE NEWS

THE CALL OF SUMMER FINDS THE NUMEROUS DEPARTMENTS IN THE STORE READY TO SUPPLY THE NEEDS OF THE MANY

The Sauciest Craft on River or Lake---The Speedy Motor Boat

A Fine Runabout Family Launch Featured in Sporting Goods Dept., Fifth Floor, at \$525.00

FOR a quick run each evening to the summer home or camp, and for general use for pleasure or convenience on the many rivers and lakes that abound throughout Ontario, the motor boat is a great favorite. It does not depend on wind, paddle or oar, but skims along without physical exertion to the occupants.

Those who are interested in motor boats would be charmed with the staunch little family launch that is shown on the fifth floor. It is a good sea boat, and is trim of line. It is 20 feet over all, with 5-ft. beam and 24-inch draught. It has cedar planking hull, with mahogany combing and trimmings, inlaid deck, with hatches over engine, engine bed of oak, and is equipped with 6 twin h.p. Forman engine with rear starting and auto steer control. It has speed of from 3 to 12 miles an



hour, and has seating capacity for 6 people. It is known as the family "Runabout" launch, and is moderately priced at \$525.00.

16-ft. Skiff, \$52.50.

Skiff—The skiff is a handy boat about the summer home or camp. A Peterboro' cedar skiff, 16 feet long, with 42-inch beam and 14-inch draught, copper - fastened throughout, and complete with pair oars, rudder and lazy back, is priced at \$52.50.



Safety First
Electric canoe lamps, red and green side lights, with bracket to fasten on lamp post and batteries. Prices, \$1.65 and \$2.75.
Canoe lamp posts, 45c.
Dry cell batteries, will last about 16 hours. Each, \$3c.
—Sporting Goods Dept., Fifth Floor.



WE PREPAY shipping charges on all orders of \$10.00 or over to your nearest station in Ontario and Eastern Provinces, on both Mail Orders and City Purchases.

Lawn Bowls—The Roarin' Game of Summer Time

F LANNEL TROUSERS, outing shirt, rubber shoes and Panama hat replace the picturesque tam-o'-shanter, plaid sports coat, and felt-soled boots of the roarin' game curling, and even the rules of the game may differ, but the interest is the same. Tired professional and business men find it a great game to banish the inevitable worries and anxieties.

If you're a lawn bowling man, or intend to be, you'll find reliable equipment in the Sporting Goods Department on the Fifth Floor. Thomas Taylor's lawn bowls of lignum vitae, in sizes 5, 5 1-16, 5 1-8, 5 3-16, and in 3 bias, are priced at \$6.50 a pair.

Jacques extra quality lawn bowls, in three bias and in same sizes as above; natural or black finish. Per pair, \$6.00.

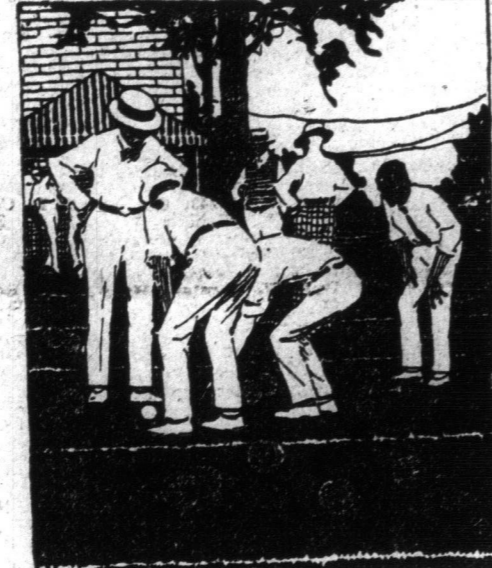
Lawn bowl nets for carrying—25c and 35c.
Kitties or jacks. 25c each.
Rubber mats, 12 x 16 inches. Price, \$1.00.

—Sporting Goods Department, Fifth Floor.

Paints, Enamels, Polishes and Varnishes for Canoes, Skiffs, Motor Boats, etc.

Every good sailor takes a pride in having a trim-looking boat, and the beginning of the season is overhauling time, when painting, patching, varnishing and polishing is a common job along the waterfront. The EATON Paint Department, on the fourth floor, contains almost every requirement of the sailorman, the few items below giving an idea of the values.

- Canoe Enamels, give a smooth, glossy finish. Colors for outside—vermillion, carmine, wine, dark green. Colors for inside canoe—ocean blue, pale green. Pint, 85c; quart, \$1.65.
- Diamond "E" Paint and Varnish Remover, quickly removes old finish. Half pint, 25c; pint, 40c; quart, 85c.
- Brasso Metal Polish, per tin, 10c, 20c and 40c.
- Gloss Metal Polish, per tin, 10c, 25c and 45c.
- Cross Metal Polish, 8 oz. tin, 15c; 16 oz., 25c.



- Apex Metal Polish, 10c.
- Sapolin Motor and Engine Enamel, in black, grey, green and maroon, 40c.
- Diamond "E" Boat Varnish, for skiffs, canoes, motor boats, etc. Half pint, 30c, pint, 55c; quart, \$1.05.
- Diamond "E" Pale Spar Varnish, a light-colored varnish for all marine purposes. Half pint, 35c; pint, 65c; quart, \$1.25.
- Diamond "E" Marine Paint, in white and dark green, for launches, yachts and rowboats. Pint, 60c; quart, \$1.15; half gallon, \$2.25.

—Fourth Floor.

Early Closing

During MAY, June, July, August and SEPTEMBER, Store Closes at 1 p.m. on Saturdays. No Noon Delivery on Saturdays.

Saturday at 1 p.m.

The "Speedwell," Thoroughly Reliable Bicycle, \$29.75

Here's a bicycle that looks unusually attractive, and one that should give every satisfaction. Besides being of good material and having every part firmly assembled, the "Speedwell" possesses these features: Hercules or New Departure coaster brakes, "Bon Ton" motorcycle style saddle, mud-guards with double steel stays, Dominion studded tires and Dominion tubes. Complete with tool bag and pump. Price, \$29.75.

—Fifth Floor.

The Canoe—That Dainty Little Craft That Flits Over the Water With Little Effort

V ENICE MAY HAVE her gondolas, but Canada can boast of her canoes, for there is probably no other small craft that compares with it for grace, ease of handling, and light draught. Whether for cruising, pleasure spin, or shooting the rapids, the canoe is a perfect little craft to the one who understands her. It is easily housed, costs little for upkeep, and is a boon companion on many a Summer outing. The canoe season is open, and on the Fifth Floor are shown a number of models which should interest those who love the outdoor life on the water.



A Peterboro' canoe, 16 feet long, 31 inches wide and 12 inches deep, is made of painted basswood. In red or green finish, complete with one pair paddles. Each, \$29.00.

A chestnut canoe in cruiser model is 16 feet long, 33 inches wide, and draws 11 inches. It is finished in green or red, and has carrying capacity of 1,000 pounds. Complete, with pair of paddles. \$40.00.

A Peterboro' cedar strip canoe in varnish finish is in a pleasure model, and is copper-fastened throughout. Same dimensions as painted basswood canoe; with pair of paddles. Price, \$47.00.

Sponson canoe—the favorite family canoe, as it is capable of supporting four persons when canoe is filled with water, and is very steady and seaworthy. This canoe is 16 feet long, is built of cedar and canvas-covered. With pair of paddles, \$65.00.

- Lazy backs, slat and wicker, 45c to \$1.25.
- Double paddles, each, \$3.25.
- Double paddles, jointed, each, \$3.50.
- Canoe cushions—Life preserver, Kapok filling, green denim covering. Each, 50c and 57c.
- Double-back life preserver canoe cushions, nicely upholstered and filled with Kapok. Will support two people. Price, \$4.50.
- Life rings, full size, 24 inches diameter, filled with Kapok. Price, each, \$2.50.
- Fancy felt cushion tops for canoe cushions, college, club, school and fraternal colors; fringed ends. Size 22 x 22. Prices, \$1.25 to \$2.00.

—Sporting Goods Department, Fifth Floor.

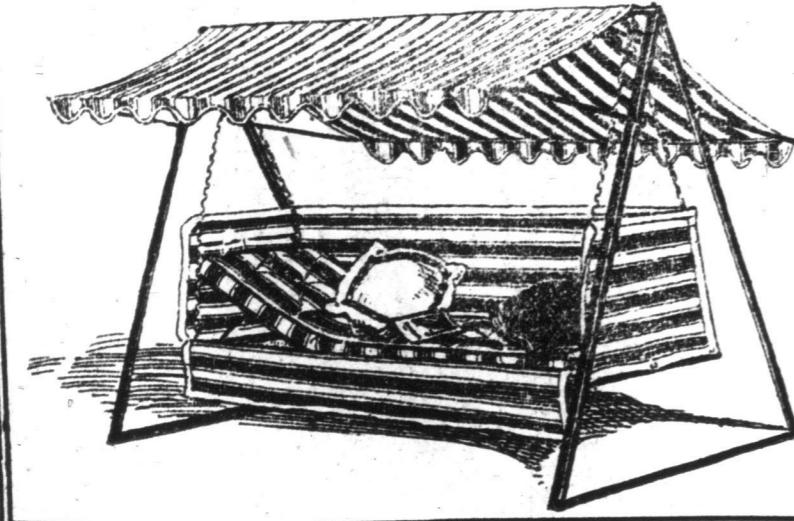
Exclusive Designs in "Romelink" Couch Hammocks for Verandah, Porch or Lawn

As Comfortable as One Could Desire, But Their Chief Charm is in Their Unique Colors and Patterns.

THESE COUCH HAMMOCKS consist of iron stand, couch and adjustable canopy top. The stands are in tubular or angle iron, and finished to match the ground color of couch. The couches have cotton-filled mattress on wire spring mattress, with helical ends, and have magazine pockets in ends.

Some have adjustable head rests, and some have adjustable upholstered backs. Here are a few from the selection, the differences being in their materials, colors and mode of suspension from frames. All prices are for stand, canopy and couch complete:

- One in heavy duck, in khaki or awning stripes, in grey and white or brown and white, has adjustable awning, with fringe, adjustable head rest and chain suspension. Complete, \$25.00.
- A striking color effect is shown in a couch hammock of green and khaki one-inch stripes. This has canopy top, with scallop border, and couch has chain suspension. Price, \$37.50.
- Another in battleship grey shade has upholstered back, as well as upholstered mattress, and canopy has scallop border. Adjustable head rest and magazine pockets. Price, complete, \$41.50.
- A battleship grey couch, with green stencil design on couch and canopy, is \$43.50.
- A green stenciled design on khaki is also priced at \$43.50.



A couch in battleship grey has chintz inlay, the pattern being a pretty morning glory design in yellow and green, which is carried out on mattress, and upholstered back and sides. The canopy has green applique braid border. Cord and chain suspension. Price, complete, \$51.00.

Another color effect which is most striking is a canary yellow, the canopy having green braid applique border, and the couch mattress and upholstered back being inlaid with moonlight scene chintz in yellow, green and shadings. Chain and cord suspension. Price, \$52.50.

Couches in white, with border design in applique black braid; a grey with black, and khaki with green are other striking effects. The canopy is treated to match, and there are two cushions in same design with each. Strong coil spring and chain suspension. Price, each, \$51.75.

—Fifth Floor.

"Artcrete" Pots, Urns and Boxes for Garden or Conservatory Decoration

ARTCRETE is a crushed marble and Portland cement mixture, which is moulded into artistic and useful pieces for garden or interior decoration. Cherubs, nymphs and architectural designs form the decorations, and are such as one would expect to find on the fountains and colonnades in the enchanted gardens of old Italian villas.

These pieces are white, resembling rough marble, are weather and time proof, and keep their sharp detail, beautiful design and delicate tracery for a lifetime.

A special display of Artcrete will be opened in the basement on Tuesday, and some are offered at prices that cannot be repeated. The few articles shown in the sketch will give an idea of the nature of these Artcrete pieces.

A—Flower Pot in Renaissance design, 16 1/2 inches high, 20 inches wide, the base 12 inches across. Price, per pair, \$16.75.

B—A panel of chubby little cherubs occupies the centre of this splendid box, the dimensions of which are 12 inches high by 12 inches wide by 52 1/2 inches long, with two supports. Price, \$27.50.

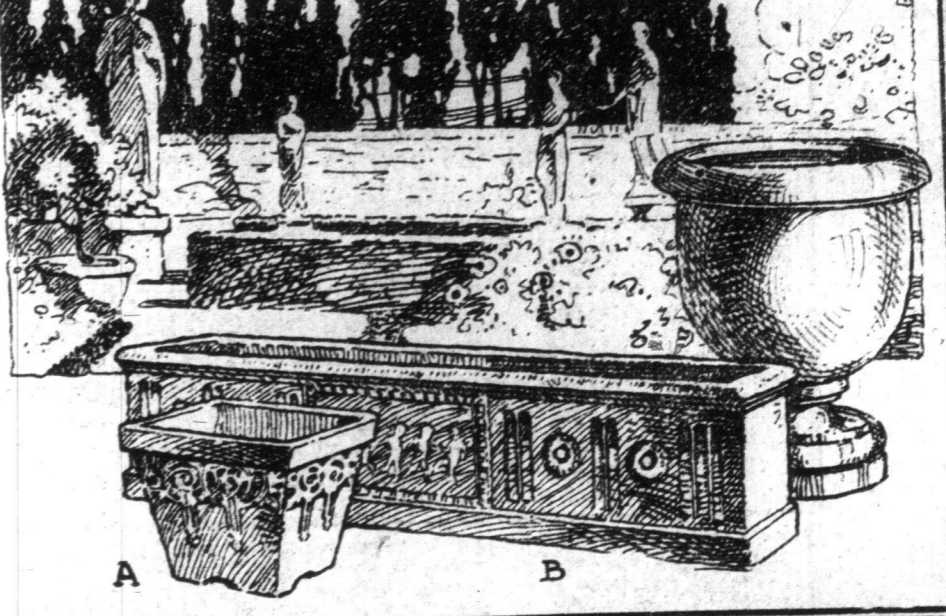
C—Urn, 26 1/2 inches high, 23 inches wide at mouth and 14 1/2 inches wide at base. Price, \$21.50.

The selection also includes vases, pairs of pots, pedestals, saucers, etc.

For instance, a pair of pots with lion's head and floral wreath decoration are 12 1/2 inches high, 16 inches wide at top and 9 1/2 inches at base. Price, per pair, \$10.25.

A pedestal for fish globes, vase or flower pot, is 36 3/4 inches high, has 10-inch round top and 9 3/4-inch octagon base. Price, each, \$15.00.

These are but representative of the values and selection. See full display, Tuesday, in Basement.



T. EATON CO. LIMITED