

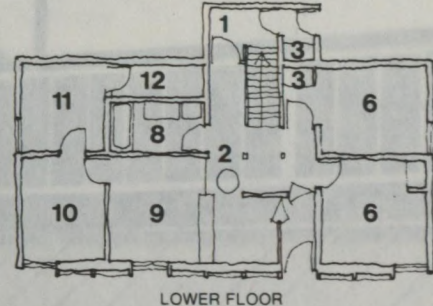
SECTION, SOUTH WALL OF WASWANIPI UNIT: 1 plastic bottles between two floors store heat. 2 absorber plate, wire mesh and transparent acrylic cover form heat collector. Corrugated insulation layer is between collector and house interior. 3 glass-reinforced plastic insulative drainage layer protects wood foundation.

SECTION, SOUTH WALL OF POINTE BLEU UNIT: 1 double transparent acrylic cover. 2 sliding double-glazed sealed windows. 3 glass-reinforced plastic insulating curtain for night use. 4 concrete block, painted black, absorbs daytime heat which can be circulated through house by opening vent at second floor.

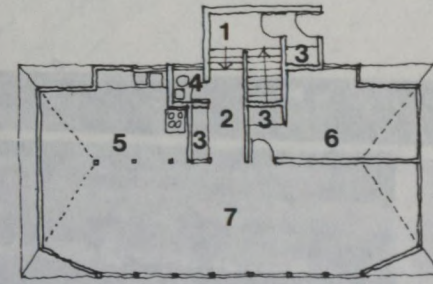
SECTION, SOUTH WALL OF MISTASSINI UNIT: 1 acrylic transparent cover over greenhouse. 2 case-ment windows. 3 oil barrels filled with chemical solution are painted black on outside, white toward interior. Glass-reinforced plastic insulating curtain keeps heat in at night. Transparent acrylic admits sun to warm solution by day. 4 wood foundation has glass-reinforced plastic insulative drainage layer.



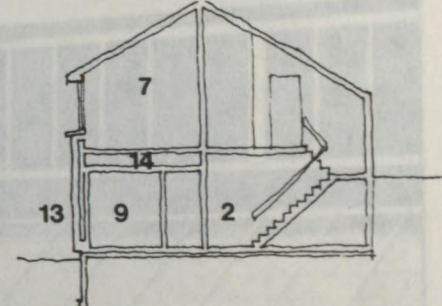
5 North wall bedroom window and roof framing, Waswanipi house.



LOWER FLOOR



WASWANIPI UPPER FLOOR



WASWANIPI SECTION

WASWANIPI HOUSE: 1 entry vestibule. 2 hallway. 3 closet. 4 toilet. 5 kitchen. 6 bedroom. 7 living/dining. 8 bathroom. 9 Band Manager's office. 10 Chief's office. 11 storage. 12 Clivus Multrum tank. 13 solar collector. 14 thermal storage.