

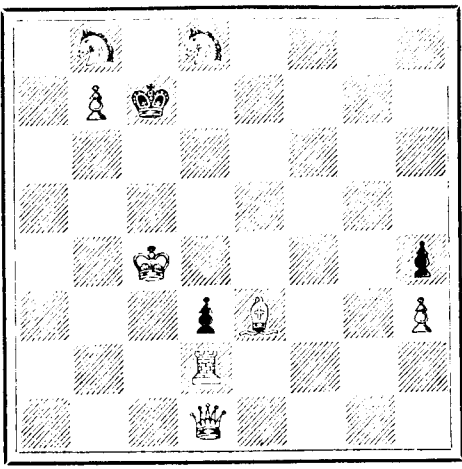
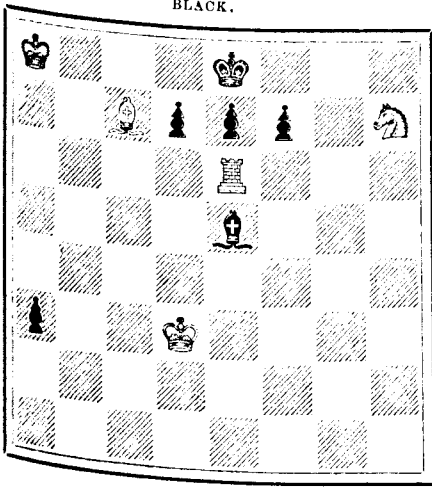
CHESS

PROBLEM No. 543.

By F. M. Teel, New York.

PROBLEM No. 544.

By D. S. Wade, St. Louis.



BLACK.

BLACK.

WHITE.

WHITE.

White to play and mate in three moves.

White to play and mate in two moves.

SOLUTIONS TO PROBLEMS.

No. 537.

No. 538.

K-R 6

- White. 1. R-Q Kt 2 2. R-Q Kt 1 3. R-K R 8 mate Black. 1. B-Q 8 2. K x P If 1. B-B 3 2. K x P With other variations.

GAME PLAYED IN THE GUNSBURG AND STEINITZ MATCH AT NEW YORK.

GINOCO PIANO.

- I. GUNSBURG. White. 1. P-K 4 2. Kt-K B 3 3. B-B 4 4. P-Q 3 5. P-B 2 6. Q-Kt-Q 2 (a) 7. K-B 1 8. Q-K 2 9. P-K R 3 (b) 10. B-K 3 11. P-Kt 3 12. P x P 13. Kt-Kt 5 (d) 14. P x B 15. B-K 3 16. Q x B 17. Kt-Q 2 (e) 18. Kt(Kt 5)-B 3 19. Kt-B 4 (f) 20. Q-Kt-Q 2 21. K-B 1 (h) 22. K-Kt 2 W. STEINITZ. Black. P-K 4 Kt-Q B 3 B-B 4 Kt-B 3 P-Q 3 P-K 2 Castles P-Q 4 Kt-Kt 3 P x P 3 B-K 3 B x B Q-Q 2 B x B P-K 3 P-B 4 Q R-Q 1 K R-K 1 (g) R-K 2 P-K R 4 P-R 5 I. GUNSBURG. White. 23. K-R 2 24. P-B 4 25. Q R-Q B 1 26. R-B 3 27. R-K Kt 1 28. Kt-B 1 29. Q-K 2 30. P x P 31. K Kt-Q 2 (j) 32. R-K B 3 33. R-Q 3 34. Q x R 35. Q x K 3 36. R-Kt 2 (k) 37. R-K 2 38. R-B 2 39. Kt-B 3 40. Q x Kt 41. Q x Q 42. R-K 2 43. K-Kt 2 Resigns (l) W. STEINITZ. Black. Q-Kt 4 Q-B 3 KR-Q 2 Kt-R 4 Q-K B 3 R-Q 8 P x P + R-R 8 Q-Kt 4 Kt-B 3 R x R Kt-B 1 Q-Kt 3 Kt-K 3 Kt-Q 5 R-R 7 Kt x Kt + Q x P Kt x Q Kt-Kt 4 Kt-K 3

NOTES.

- (a) White varied his development every time in this opening; it is, however, questionable whether this move is advisable before his QB has been brought into play. (b) White makes too many preparatory moves. (c) There was no necessity of exchanging pawns. (d) If B x B, P x B, the open R file might become dangerous. (e) R-Q 1 was the right move here. (f) There is not much object in this move. (g) It would have been very strong if he had manoeuvred so as to be able to play at a subsequent stage P-K B 4 supported by the Rook. (h) His only alternative; to castle on the Q side would have exposed him to a lively attack. (i) Kt-K 3 would have been decidedly better. (j) This and the following moves are compulsory. (k) He cannot prevent the loss of a second pawn.

THE GRAPHIC.

AMERICA'S POPULAR ILLUSTRATED WEEKLY. Twenty-four pages of choice Reading and Fine Illustrations every issue. Though the youngest of the great illustrated weeklies of the country, its growth has been so rapid as already to give it a foremost rank. Located in the World's Fair City its pages will form a magnificently illustrated history of the great COLUMBIAN EXPOSITION.

ITS READING PAGES INCLUDE:

- Editorials.—All current topics of interest being treated ably, concisely and with especial reference to social and other great questions of the day. The Week.—Comprising a review of the principal events, with terse comments. Political.—Presenting in compact form the chief political happenings. Books and Authors.—Reviewing the more important recent books, with notes on authors and interesting literary gossip. Foreign.—Presenting a review of events in all foreign countries, with comments adequate to an intelligent understanding of current foreign history. Home and Society.—By "Olive Ohnet," which treats entertainingly of matters of home interest, fashions, household decoration, etc. Art Notes.—Embracing information of a critical, personal and newsworthy character of much value to all who take an interest in art, either in a general, amateur or a professional way. The Churches.—Reviewing briefly and impartially the chief events in the world of churches, at home and abroad. Science Gossip.—Giving in brief the latest researches in science of popular interest.

- Music and Drama.—These departments are in charge of an able critic whose work commands universal admiration. Pastimes.—Notes and comments in the field of amateur and professional sports. Finance and Trade.—Presenting a review of the money and trade markets, with able comments.

ITS ILLUSTRATIONS COMPRISE:

- Portraits of men and women of note in the world of politics, literature, art, science, drama, etc. Engravings.—Illustrating events in all States in the Union. Sketches of life in city and country. Representations of the more noted paintings of home and foreign artists. Views of cities, scenery, etc., in this country and other parts of the world.

ITS CONTRIBUTORS INCLUDE:

- Mrs. Mary Hartwell Catherwood. "Octave Thanet," Mrs. Lou V. Chapin, Judge Elliott Anthony. And scores of other writers of reputation.

EVERYBODY SHOULD READ IT.

PRICE \$3 A YEAR.

Sample Copy 10 cents.

THE GRAPHIC is a complete weekly epitome of events at home and abroad, attractively illustrated, presenting also a reflex of the best thoughts on current topics. THE GRAPHIC COMPANY, Publishers, Dearborn and Randolph Sts., Chicago, Illinois, U.S.A.

THE CANADIAN GAZETTE.

EVERY THURSDAY.

A WEEKLY JOURNAL OF INFORMATION AND COMMENT UPON MATTERS OF USE AND INTEREST TO THOSE CONCERNED IN CANADA, CANADIAN EMIGRATION AND CANADIAN INVESTMENTS.

Edited by THOMAS SKINNER,

Compiler and Editor of "The Stock Exchange Year Book," "The Directory of Directors," "The London Banks, etc."

SUBSCRIPTION,

18s. PER ANNUM.

LONDON, ENGLAND:

1 ROYAL EXCHANGE BUILDINGS, E. C.

OR MESSRS. DAWSON BROTHERS, MONTREAL.

Chronic

Catarrh destroys the sense of smell and taste, consumes the cartilages of the nose, and, unless properly treated, hastens its victim into Consumption. It usually indicates a scrofulous condition of the system, and should be treated, like chronic ulcers and eruptions, through the blood. The most obstinate and dangerous forms of this disagreeable disease

Catarrh

is usually the result of a neglected "cold in the head," which causes an inflammation of the mucous membrane of the nose. Unless arrested, this inflammation produces Catarrh which, when chronic, becomes very offensive. It is impossible to be otherwise healthy, and, at the same time, afflicted with Catarrh. When promptly treated, this disease may be

Can be

cured by taking Ayer's Sarsaparilla. **I have always been more or less troubled with Scrofula, but never seriously until the spring of 1882. At that time I took a severe cold in my head, which, notwithstanding all efforts to cure grew worse, and finally became a chronic Catarrh. It was accompanied with terrible headaches, deafness, a continual coughing, and with great soreness of the lungs. My throat and stomach were so polluted with the mass of corruption from my head that Loss of Appetite, Dyspepsia, and Emaciation totally unfitted me for business. I tried many of the so-called specifics for this disease, but obtained no relief until I commenced taking Ayer's Sarsaparilla. After using two bottles of this medicine, I noticed an improvement in my condition. When I had taken six bottles all traces of Catarrh disappeared, and my health was completely restored. — A. B. Cornell, Fairfield, Iowa.

Cured

by the use of Ayer's Sarsaparilla. **I suffered, for years, from chronic Catarrh. My appetite was very poor, and I felt miserably. None of the remedies I took afforded me any relief, until I commenced using Ayer's Sarsaparilla, of which I have now taken five bottles. The Catarrh has disappeared, and I am growing strong and stout again; my appetite has returned, and my health is fully restored. — Susan L. W. Cook, 909 Albany street, Boston Highlands, Mass.

For thoroughly eradicating the poisons of Catarrh from the blood, take

Ayer's Sarsaparilla.

saparilla. It will restore health and vigor to decaying and diseased tissues, when everything else fails. Prepared by Dr. J. C. Ayer & Co., Lowell, Mass.

It is the safest and most reliable of all blood purifiers. No other remedy is so effective in cases of chronic Catarrh. Sold by all Druggists. Price \$1; six bottles, \$5.



ALL THE FLESH-FORMING AND STRENGTH-GIVING ELEMENTS OF PRIME BEEF

ARE SUPPLIED BY

JOHNSTON'S FLUID BEEF.

It is a Valuable Food for the Sick. An Invigorating and Stimulating Beverage. NUTRITIOUS, PALATABLE and EASILY DIGESTED

CURE FOR ALL.

HOLLOWAY'S OINTMENT

as an infallible remedy for Bad Legs, Bad Breasts, Old Wound Sores and Ulcers. It is famous for Gout and Rheumatism. For Disorders of the Chest it has no equal. FOR SORE THROATS, BRONCHITIS, COUGHS, COLDS, Glandular Swellings and all Skin Diseases it has no rival; and for contracted and stiff joints it acts like a charm.

Manufactured only at THOMAS HOLLOWAY'S Establishment, 87 New Oxford St. London; And sold by all Medicine Vendors throughout the World. N.B.—Advice Gratis, at the above address, daily, between the hours of 11 and 4 or by letter.

—) ELIAS ROGERS & CO., (— WHOLESALE AND RETAIL DEALERS IN COAL AND WOOD.

HEAD OFFICE:—30 KING STREET WEST.

BRANCH OFFICES:—409 Yonge Street, 765 Yonge Street, 552 Queen Street West, 44 Queen Street East. YARDS AND BRANCH OFFICES:—Esplanade East, near Berkeley Street; Esplanade foot of Princess Street; Bathurst Street, nearly opposite Front Street.