

hood of their success in carrying out their views. Some recognized body of chessplayers to whom chess difficulties, when they occur, could be referred, is much needed, and will become more and more apparent as the game increases the number of its admirers. The subject is a very important one, and we shall endeavour to say more respecting it as particulars reach us.

CHESS IN NEW ZEALAND.

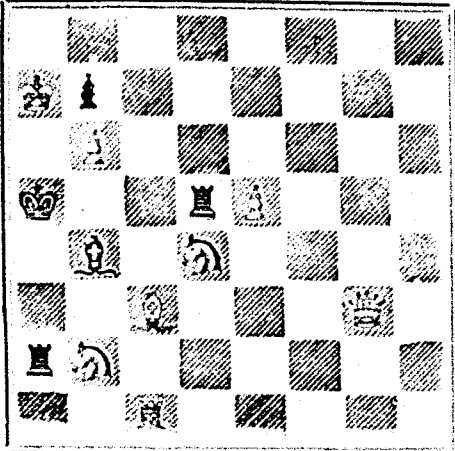
The Kumara Times contains a most interesting account of the largest chess tournament yet held in New Zealand. No less than 40 players originally entered, and of these 35 actually competed. They were divided into seven classes, and in the first instance each man played two games on even terms with every other player in his own class, the highest scorer becoming in each case the representative of his class. The seven representatives then played a pool of two games at odds all round, the result being that Messrs. McKenzie (class 5), Weisner (class 2), Bennett (class 6), came out with a score of 2 1/2 each. On playing off these ties, the totals were, Mr. McKenzie 3, Bennett 2, Weisner 1. Suitable prizes were given to the winners. The other four representatives also received prizes of smaller value for standing best in their respective classes.—Chessplayers' Chronicle.

PROBLEM No. 311.

By C. Callander.

(From Chess Chips)

BLACK



WHITE.

White to play and mate in two moves.

GAME 4391M.

(From Land and Water)

BLINDFOLD CHESS.

One of the eight games played by Mr. J. H. Blackburne without sight of boards or men at the Manchester Athenaeum Chess Club, November 13th, 1859.

(Vienna Opening)

White.—(Mr. Blackburne) Black.—(Mr. W.)

- 1. P to K4 1. P to K4
2. Kt to Q B3 2. B to B4 (a)
3. P to B4 3. P to Q4
4. Kt to B3 4. B to Kt5 (b)
5. B to B4 5. Kt to K B3
6. P to K R3 6. B takes Kt
7. Q takes B 7. Kt to B3
8. P to B5 8. Kt to Q5 (c)
9. Q to Kt3 9. Kt to R4 (d)
10. Q to Kt4 10. P to Kt3
11. R to B sq 11. Kt to K B3
12. Q to R4 12. R to K B sq
13. P to Q3 13. Kt to R4
14. B to K Kt5 14. P to K B3
15. B to R6 15. Kt takes P (e)
16. K to Q2 16. Kt takes R
17. B takes R 17. K takes B
18. P takes P 18. P takes P
19. P to K Kt4 19. P to Q4 (f)
20. Kt takes P 20. P to B3
21. Kt takes P (g) 21. Q to R4 (h)
22. R to K2 22. Kt to B5 (i)
23. R takes Kt 23. P takes R
24. Q to R7 Resigns.

NOTES.

- (a) Anderssen's favourite defence. In effect it is the King's Gambit declined.
(b) He has not gone far with Anderssen, for the latter would have played here Kt to K B3, and then P to Q B3.
(c) This does not alarm White very much.
(d) If Kt takes P (e), then 10 K to Q sq. Kt takes R, 11 Q takes Kt, P, R to K B sq, 12 P to Q3, and Mr. Blackburne would no doubt be satisfied, though many might feel afraid.
(e) Goes for the Q R at length, but better before rather than now.
(f) If Kt to B5, then mate in three moves. Ergo, Black is in the street called Queer.
(g) All is over; close the shutters.

SOLUTIONS

Solution of Problem No. 308.

- White. Black.
1. Q to B sq 1. K to K5
2. B to R6 2. Any
3. Q mates

Solution of Problem for Young Players No. 307.

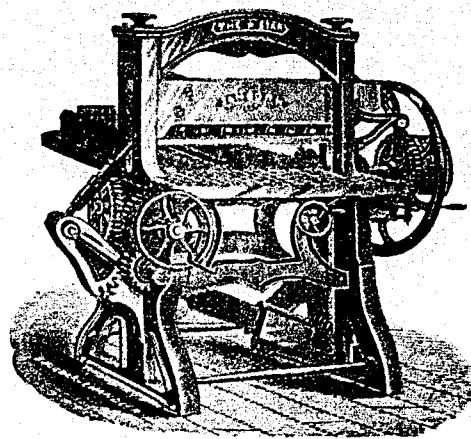
- WHITE. BLACK.
1. Kt to Q B6 1. B to Q3
2. P to B5 2. Any move.
3. Mates acc.

PROBLEM FOR YOUNG PLAYERS, No. 308.

- White. Black.
Kt to K2 Kt to Q5
R to K B3 Pawn to K R5
Kt to Q2 K Kt4
Pawn to K B4 Q4, Q B4 and 6.
Q3 and Q Kt2

White to play and mate in three moves.

THIS PAPER MAY BE FOUND ON FILE AT GEO. P. ROWELL & CO'S Newspaper Advertising Bureau (10 SPRUCE STREET), WILKIE ADVERTISING CONTRACTS may be made for it in NEW YORK.



THE STAR.

20 inch 32 inch 34 inch 38 inch 44 inch 48 inch

ACADEMY OF MUSIC.

SALVINI!

Two performances only. The Illustrious Italian Tragedian,

SALVINI,

Supported by an American Company, under the management of Mr. John Stevan.

Monday, January 17th.

THE GLADIATOR.

Tuesday, January 18th.

UNION SQUARE COMPANY IN FRENCH FLATS.

Wednesday, January 19th.

O'HELLO.

Prices—General admission, \$1; Reserved Seats, \$2 and \$1.50; Gallery, 50c. The sale of seats and boxes has begun at 126 St. James Street.

If you are a man of business, weakened by the strain of your duties, avoid stimulants and take

HOP BITTERS.

If you are a man of letters, toiling over your midnight work, to restore brain and nerve waste, take

HOP BITTERS.

If you are young, and suffering from any indiscretion or dissipation take

HOP BITTERS.

If you are married or single, old or young, suffering from poor health or languishing on a bed of sickness, take

HOP BITTERS.

Whoever you are, wherever you are, whenever you feel that your system needs cleansing, toning or stimulating, without intoxicating, take

HOP BITTERS.

Have you dyspepsia, bilious or urinary complaint, disease of the stomach, bowels, blood, liver, or nerves? You will be cured if you take

HOP BITTERS.

If you are simply ailing, are weak and low-spirited, try it! Buy it. Insist upon it. Your druggist keeps it.

HOP BITTERS.

It may save your life. has saved hundreds.

NOTICE TO PHOTOGRAPHERS.

One of the oldest established stands in the city to let furnished.

Including Lenses, Cameras and all necessary apparatus, together with ten thousand negatives, furniture, sample frames, show cases, &c. Located in the best business centre of the city. Terms very moderate. Apply to

BURLAND LITHOGRAPHIC CO.

Mr. J. H. BATES, Newspaper Advertising Agent, 41 PARK ROW Times Building, NEW YORK, is authorised to contract for advertisements in the CANADIAN ILLUSTRATED NEWS at our BEST RATES.

THE COOK'S FRIEND

BAKING POWDER

Has become a HOUSEHOLD WORD in the land and is a HOUSEHOLD NECESSITY

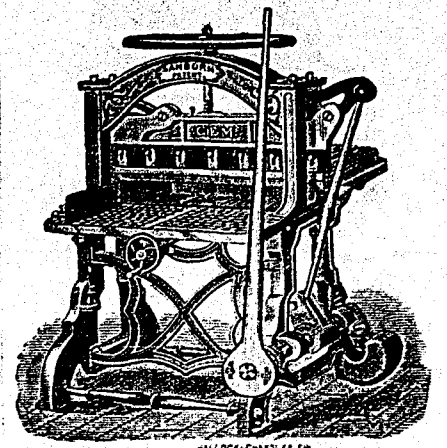
In every family where Economy and Health are studied.

It is used for raising all kinds of Bread, Rolls, Pastry cakes, Griddle Cakes, &c., &c., and a small quantity used in Pie Crust, Puddings, or other Pastry, will save half the usual shortening and make the food more digestible

THE COOK'S FRIEND

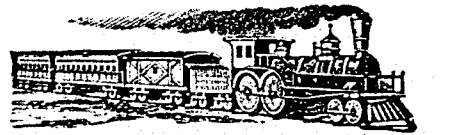
SAVES TIME. IT SAVES TEMPER. IT SAVES MONEY. For sale by storekeepers throughout the Dominion, and wholesale by the manufacturer. W. D. McLARRN, UNION MILLS, 19-21-302 55 College Street.

BOOK BINDERS' PRINTERS' and PAPER BOX MAKERS' NEW YORK, CHICAGO, 28 Beekman St. 77 Monroe St. GEO. H. SANBORN, Standard Machinery Co.



THE GEM.

20 inch 32 inch.



C. M. C. AND O. RAILWAY.

Change of Time.

COMMENCING ON

Thursday, Dec. 23rd, 1880.

Trains will run as follows:

Table with columns: MIXED, MAIL, EXPRESS. Rows list train routes between Montreal, Quebec, and Ottawa with departure and arrival times.

The Scientific Canadian

MECHANICS' MAGAZINE AND PATENT OFFICE RECORD A MONTHLY JOURNAL

Devoted to the advancement and diffusion of Practical Science, and the Education of Mechanics.

THE ONLY SCIENTIFIC AND MECHANICAL PAPER PUBLISHED IN THE DOMINION.

THE BURLAND LITHOGRAPHIC CO.

OFFICES OF PUBLICATION, 5 and 7 Bleury Street, Montreal. G. B. BURLAND General Manager. F. N. BOXER, ARCHITECT & CIVIL ENGINEER, Editor

TERMS:

One copy, one year, including postage, \$2.00 One copy, six months, including postage, \$1.10 Subscriptions to be paid in ADVANCE.

The following are our advertising rates:—For one monthly insertion, 10 cts. per line; for three months, 9 cts. per line; for six months, 8 cts. per line; for one year, 7 cts. per line; one page of illustration, including one column description, \$30; half-page of illustration, including half column description, \$20; quarter-page of illustration, including quarter column description, \$10. 10 per cent. off on cash payments.

INVENTIONS AND MACHINERY, &c., or other matter of an original, useful, and instructive character, and suitable for subject matter in the columns of the MAGAZINE, and not as an advertisement, will be illustrated at very reduced rates.

REMITTING MONEY.—All remittances of money should be in the form of postal orders. When these are not available, send money by registered letters, checks or drafts, payable to our order. We can only undertake to become responsible for money when sent in either of the above ways.

This journal is the only Scientific and Mechanical Monthly published in Canada, and its value as an advertising medium for all matter connected with our Manufactories, Foundries, and Machine Shops, and particularly to Inventors, is therefore apparent.

THE BURLAND LITHOGRAPHIC COMPANY

(LIMITED)

CAPITAL \$200,000,

GENERAL

Engravers, Lithographers, Printers

AND PUBLISHERS,

3, 5, 7, 9 & 11 BLEURY STREET, MONTREAL.

THIS ESTABLISHMENT has a capital equal to all the other Lithographic firms in the country, and is the largest and most complete Establishment of the kind in the Dominion of Canada, possessing all the latest improvements in machinery and appliances, comprising:—

- 12 POWER PRESSES
1 PATENT LABEL GLOSSING MACHINE
1 STEAM POWER ELECTRIC MACHINE,
4 PHOTOGRAPHING MACHINES,
2 PHOTO-ENGRAVING MACHINES,
Also CUTTING, PERFORATING, NUMBERING, EMBOSSING, COPPER PLATE PRINTING and all other Machinery required in a first class business.

All kinds of ENGRAVING, LITHOGRAPHING, ELECTROTYPING AND TYPE PRINTING executed in the BEST STYLE

AND AT MODERATE PRICES

PHOTO-ENGRAVING and LITHOGRAPHING from pen and ink drawings a SPECIALITY.

The Company are also Proprietors and Publishers of the

CANADIAN ILLUSTRATED NEWS, L'OPINION PUBLIQUE, and SCIENTIFIC CANADIAN.

A large staff of Artists, Engravers, and Skilled Workmen in every Department.

Orders by mail attended to with Punctuality; and prices the same as if given personally.

G. B. BURLAND, MANAGER.

CONTRACTS FOR ADVERTISING IN THE Canadian Illustrated News MAY BE MADE AT OUR LOWEST RATES WITH MR. E. DUNCAN SNIFFIN, ASTOR HOUSE OFFICES NEW YORK.

British American BANK NOTE COMPANY, MONTREAL.

Incorporated by Letters Patent.

Capital \$100,000.

General Engravers & Printers

- Bank Notes, Bonds, Postage, Bill & Law Stamps, Revenue Stamps, Bills of Exchange, DRAFTS, DEPOSIT RECEIPTS, Promissory Notes, &c., &c., Executed in the Best Style of Steel Plate Engraving.

Portraits a Specialty. G. B. BURLAND, President & Manager