

DRAUGHTS-CHECKERS

All communications to this department should be addressed directly to the Checker Editor, W. Forsyth, 36 Grafton Street.

NEWS.

Our Checker Editor, Mr. William Forsyth, is on a visit to the Upper Provinces, which will probably last two or three weeks. Mr. Samuel Granville has very kindly consented to occupy Mr. Forsyth's chair till his return.

The prize offered for Problem 231 will be awarded on Mr. Forsyth's return.

CORRESPONDENCE.

A. S. McKie, Sydney, C. B.—Your question will be answered in detail on Mr. Forsyth's return.

SOLUTION.

PROBLEM 232.—The position was black men on 6, 22, 27, kings 3, 15, 23; white men 16, 29, 32, kings, 5, 12, 13; black to play and win.
 22—25 32 23 6—9 16 7
 29 22 26—17 5 14 3—19
 23—26 13 22 15—11 b. wins.

GAME NO. 112—"DOUBLE CORNER."

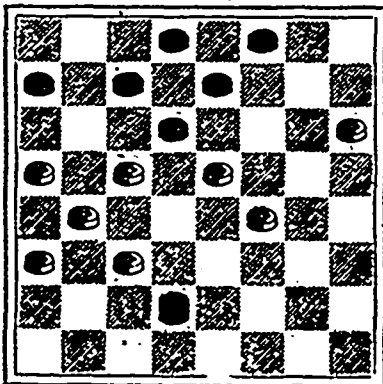
Played on "Labor Day," in Halifax, between Messrs. Granville and Hamilton. Several nice points were developed in this game, and a study of it would prove instructive to persons learning "the silent game."

9—14	1—5	16—19	6—15
24 19 18 9	8 3 1 6		
11—16	5—14	19—24	15—18
22 18 30 25	27 23 6 10		
5—9	11—18	24—27	18—22
25 22 26 22	25 22 10 15		
8—11	3—7	27—31	22—26
29 25 22 15	32 18 15 19		
4—8	7—11	31—27	
18 15 28 24	18 9	Drawn.	
11—18	11—18	27—18	
22 15 24 20	9 5		
9—15	8—11	18—23	
25 22 19 15	5 1		
7—11	10—26	2—7	
22 18 31 8	3 10		

PROBLEM 234.

By W. Strickland.

Black men 3, 3, 5, 6, 7, 10; king 26.



White men 12, 13, 14, 15, 17, 19, 21, 22.

White to play and win.

We notice that Wylie, the "Herd Laddie," does not allow "the grass to grow under his feet." The Liverpool Mercury reports that since his return from Australia he had played to that time at London ninety games, of which he won eighty-one, lost two and seven were drawn.

MUCH BETTER, Thank You!

THIS IS THE UNIVERSAL TESTIMONY of those who have suffered from CHRONIC BRONCHITIS, COUGHS, COLDS, OR ANY FORM OF WASTING DISEASES, after they have tried

SCOTT'S EMULSION

Of Pure Cod Liver Oil and HYPOPHOSPHITES—Of Lime and Soda.—IT IS ALMOST AS PALATABLE AS MILK. IT IS A WONDERFUL FLESH PRODUCER. It is used and endorsed by Physicians. Avoid all imitations or substitutions. Sold by all Druggists at 50c. and \$1.00. SCOTT & BOWNE, Belleville.

GILLETT'S PURE POWDERED LYE

PUREST, STRONGEST, BEST. Ready for use in any quantity. For making Soap, Softening Water, Disinfecting, and a hundred other uses. A can equals 20 pounds of Soda. Sold by All Grocers and Druggists. W. GILLETTE, Toronto.

TRUSSES.

We carry in Stock all kinds of Spring and Elastic Trusses, Abdominal Supporters, Belts, Shoulder Braces, &c.

HEADQUARTERS FOR CRUTCHES. Agents for SULLY'S HARD RUBBER TRUSSES.

Buckley Bros.

87 & 89 BARRINGTON STREET. 201 BRUNSWICK STREET.

Army and Navy Depot, Granville St HALIFAX, N. S. FULL STOCK GROCERIES, viz.: SUGAR, Cut Loaf, Granulated, Pulverized Porto Rico. TEAS and COFFEE, best value in the city CHEESE, English and Canadian Stilton. FLOUR, best Pastry and Superior. OATMEAL and CORNMEAL. BUTTER and LARD (in 10, 5 and 3 lb tins). MOLASSES; Diamond N., Golden Syrup. PICKLES, Assorted; Lazenby and Croese and Blackwell. SAUCES, Worcester, Harvey, Nabob, etc. JAMS and JELLIES, Croese & Blackwell, Keller and Morton. FRENCH PEAS, MUSHROOMS, CAPERS, etc. TRUFFLES, CAPERS and OLIVES. SOUPS, in tins. Huckin's American. CANNED and POTTED MEATS. CONDENSED MILK, Swiss and Truro. BISCUIT, English, American & Canadian BENT'S WATER CRACKERS and WAFERS. RAISINS, CURRANTS, FIGS, DATES, ORANGES. TOBACCO and CIGARS, Havana.

JAS. SCOTT & CO.

A HAPPY UNION!

"What a Boon it would be to the Medical Profession if some reliable Chemist would bring out an Extract of Malt in Combination with a well Digested or Peptonized Extract of Beef, giving us the Elements of Beef, and the Nutritious and Stimulating portions of Ale." So wrote the late eminent

J. MILNER FOTHERGILL, M. D., LONDON.

Ale and Beef Peptonized

Is the identical combination as suggested above. ALE and BEEF PEPTONIZED is endorsed by leading Physicians. ALE and BEEF PEPTONIZED is the only Food combined with a Mild Stimulant. ALE and BEEF PEPTONIZED for weak and delicate women and children. ALE and BEEF PEPTONIZED for lost energy and want of appetite. ALE and BEEF PEPTONIZED for Dyspepsia and kindred troubles. ALE and BEEF PEPTONIZED is an aid to Digestion. Ale and Beef Peptonized is A NUTRIENT, A TONIC, A DIGESTIVE, A MILD STIMULANT. PRICE 25 CENTS.—At your Druggist's—PRICE 25 CENTS.

MANUFACTURED BY THE CANADA PEPTONIZED BEEF AND ALE CO, Ltd HALIFAX, N. S.

WM. STAIRS, SON & MORROW,

HALIFAX, N. S.

DEALERS IN HEAVY & SHELF HARDWARE,

Have constantly arriving

Novelties in Shelf Goods & Improved Mechanics' Tools, &c.

DEALERS WILL DO WELL TO SEND FOR CATALOGUES.

International Brick and Tile Co.

Works: BRIDGETOWN, ANNAPOLIS COUNTY, N. S.

CAPACITY from 5 to 10 MILLION BRICK PER ANNUM.

Our Bricks are manufactured from the latest and most Improved Steam Brick Machinery.

Our best quality of common Brick have smooth surface square edges and corners, and are almost equal to pressed or faced Brick.

Send for estimates.

JOHN ERVIN, Secretary.