

There Will be Exceptional Bargains in Every Department of This Store **FRIDAY & SATURDAY**

MILL ENDS

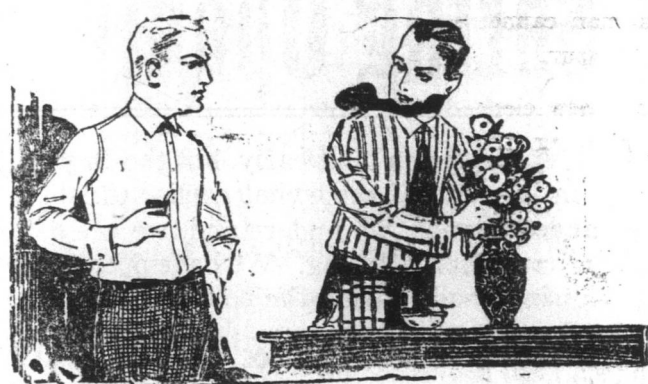
Bought from American manufacturers, and priced low for our remnant and oddment sale. All long lengths:—
Superior Quality Flannelette35c. yard.
Fancy Cottons14c. yard.
Fine Muslin and Cottons35c. yard.
Bright, New Gingham25c. yard.

In addition to clearance prices on Remnants, Soiled Goods and Small Lots—left over from our Annual February Sale, there are several important sales of brand new Spring Merchandise in progress and the money-saving opportunities cover almost every personal and household need.

Fleeced Jersey, by the lb.

Large, Medium and Small size pieces fleeced and elastic ribbed. Just the right goods for making children's Spring, Summer or Winter Underwear. All weights. You cannot have too much of this. Pick your choice at **40c.**

Be On Hand To-Morrow Morning With Little Money and Big Expectations



Men's Furnishings for St. Patrick's Day

MEN'S PADDY GREEN TIES—Of soft Japanese Silk, in wide end or Derby styles; also a full assortment of fancy colors. Reg. 75c. each. **Friday and Saturday64c.**

MEN'S GREEN TIES—In assorted shades. You'll have no trouble in finding the right shade here for St. Patrick's Day; also colors. Reg. \$1.35 each. **Friday and Saturday\$1.17**

MEN'S BLACK CASHMERE SOCKS—A beautiful, soft quality of pure wool, knit in plain only with elastic ribbed tops, double toes and heels. Reg. \$1.25 pr. **Friday and Saturday\$1.10**

MEN'S PRINCE BRACES—A very popular Brace, with stout cord, detachable ends and nickel-plated fittings; a good wearing quality. Regular 55c. pair. **Friday and Saturday51c.**

MEN'S WHITE LAWN HANDKERCHIEFS—Initialed and finished at edge with a narrow hemstitched hem. Regular 20c. each. **Friday and Saturday16c.**

Remember: All Sailors and Soldiers get Special Prices Here.



BOYS' CORDUROY SUITS—Suffolk style with belt and large metal buckle. The Coat is well and stylishly made, has 3 outside and one inside pocket. The pants are in open knee style with three pockets, improved waistband and lining of stout brown cotton. They will wear like nails and give the greatest amount of satisfaction.

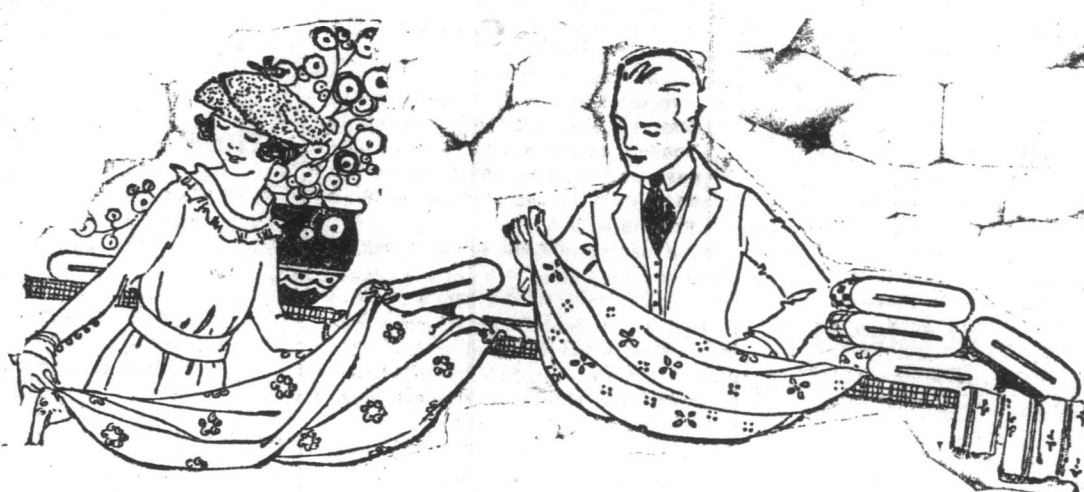
Sizes 5 to 8 years**\$14.00 Suit.**
Sizes 9 to 12 years**\$14.75 Suit.**
Sizes 13 to 16 years**\$15.50 Suit.**

BOYS' JERSEY SUITS—To fit from 2 to 4 years, made with Polo collar and front closing. Colors: Navy, Saxe, Brown and Cardinal. Reg. \$4.25 suit. **Friday and Saturday\$3.60**

BOYS' TWEED CAPS—A style that can be worn for Spring, Winter and Summer. The carbands are invisible when turned up. Regular \$1.00 each. **Sale Price84c.**

BOYS' COTTON HOSE—Of good quality combed yarn. Guaranteed wear in every pair. Regular 55c. pair. **Friday and Saturday49c.**

We Have Just Opened Another Lot of NEW SILKS



These we consider even better value than the previous shipment, and the new shades and weaves are right up-to-date.

If you anticipate having a new silk dress or blouse we advise you to come now and make your selection from the largest and best assortment of Silks in this Dominion.

NATURAL SHADE SHANTUNG SILK.

That would make serviceable summer dresses. Its rough finish gives it a most desirable appearance and it will give satisfactory service and wear beautifully; 36 inches wide. Reg. \$1.65 yard. **\$1.38 Sale Price**

DRESS & COSTUME GOODS.

Grey, Green, Myrtle and Brown Tweeds in smart heather mixtures and fine Serges in Navy, Green, Saxe, Brown, Grey and Black. Considered real good value at \$2.75 yard. **Friday and Saturday\$2.50**

SILK CREPE-DE-CHENE.

This soft silk with its beautiful, wavy finish makes beautiful dresses and waists. It gives splendid satisfaction and drapes well. Colors: Myrtle, Mid Grey, Reseda, Purple, Maise, Brown, Fawn, V. Rose, Coral, Saxe, Cream, Biscuit, P. Blue, Champagne, etc. Reg. \$2.95 yard. **Friday and Saturday\$2.48**

SARANAC CLOTH.

In Canary, White, Pink, Saxe and Champagne. Comes 36 inches wide, and can be used for dresses, blouses, children's wear or in every case where Casement Cloth is used. Reg. 55c. yard. **48c. Friday and Saturday**

COLORED JAP SILK.

Regular \$1.85 for \$1.47 Yard.

This excellent quality can be used for many purposes. It is a great favorite for party dresses and fine waists. It is a quality that we can cheerfully recommend for value. Colors: Myrtle, Nile, Navy, Saxe, Purple, Dark Brown, Nigger, Cream, Pink, Lemon, Leach, Grey and Pale Blue; 36 inches wide. Regular \$1.85 yard. **Friday and Saturday\$1.47**

JAP SILK—In a still better grade. Every up-to-date woman will want a length or two from this line. All new shades. Regular \$2.75 yard. **Friday and Saturday\$2.50**



Showroom Specials

VINOLIA SOLIDIFIED BRILLIANTINE—A preparation for preserving and imparting strength and beauty to the hair. Regular 40c. **34c. Friday and Saturday**

WOMEN'S KID HAND BAGS—A most desirable style, with pointed, turned down top, to close at the outside with nickel-plated clip. A good large size, designed from real soft kid in Tan, Navy, Brown, Blue and Black. Reg. \$1.50 each. **Sale Price\$1.18**

WOMEN'S AND CHILDREN'S HANDKERCHIEFS—With picot edge borders in pink and blue; made from soft muslin and lawn. Regular 7c. each. **Friday and Saturday6c.**

CHILDREN'S BONNET FRONTS—Of silk, thickly ruffled and stitched to stout cotton material; Cream and White. Regular 20c. each. **Friday and Saturday16c.**

HAIR FLAITS—Black, Grey, Light, Mid and Dark Brown; 24 inches long. Splendid value at 35c. each. **Friday and Saturday28c.**

HAIR FRIZZETS—Medium, Light and Dark Brown; natural shades. Reg. 14c. each. **Friday and Saturday11c.**

WHITE GLAZE LEATHER BELTS—Strongly eyeletted; fitted with silver plated buckles. Value for 25c. each. **Friday and Saturday10c.**

Women's Underwear

FLEECE-LINED VESTS—In a good medium weight. These we have just opened, and consider them extra value; sizes 34, 36 and 38. Reg. 65c. garment. **59c. Friday and Saturday**

WOMEN'S JOB CORSETS—Grey and White. Cut in a big assortment of styles. Sizes 18, 20, 22, 24, 26, 28, 30, 32, 34, 36, 38, 40, 42, 44, 46, 48, 50, 52, 54, 56, 58, 60, 62, 64, 66, 68, 70, 72, 74, 76, 78, 80, 82, 84, 86, 88, 90, 92, 94, 96, 98, 100. Regular \$1.30 pair. **Friday and Saturday89c.**

WOMEN'S HOSE—All Wool Cashmere in plain and ribbed. Our most popular line. Regular \$1.80 pair. **Friday & Saturday\$1.59**

Regular \$1.20 pair. **Friday & Saturday\$1.04**



Sale of Soiled Blouses



Let overs from our recent Sale; slightly soiled and mended about from the handling, but nothing more than that. The materials are White and Colored Voile and Muslin. All sizes.

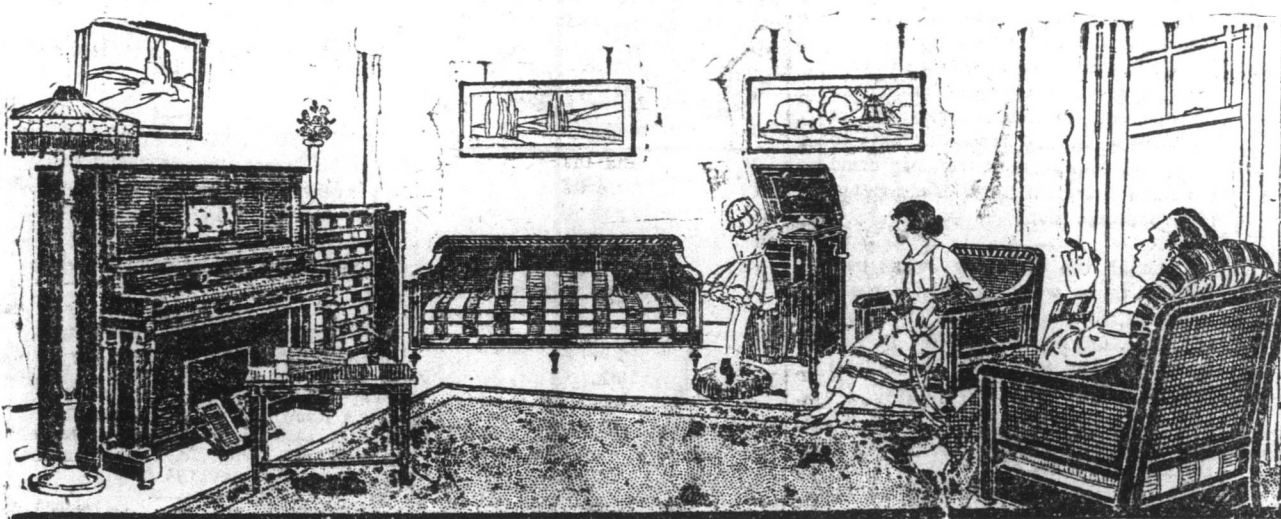
Regular \$1.60 each. **Sale Price\$1.28**
Regular \$1.85 each. **Sale Price\$1.49**
Regular \$2.00 each. **Sale Price\$1.60**
Regular \$2.25 each. **Sale Price\$1.75**
Regular \$2.40 each. **Sale Price\$1.90**
Regular \$2.55 each. **Sale Price\$2.05**
Regular \$3.25 each. **Sale Price\$2.49**
Regular \$3.50 each. **Sale Price\$2.80**

GREEN RIBBON for St. Patrick's Day, also colored ribbon in V. Rose, Crimson, Cardinal, Moss, Tan, Brown, Green, Hello, Buttercup and Purple, 4 inches wide. Reg. 65c. yard. **Friday and Saturday54c.**

Underwear Prices Slashed CHILDREN'S AND MISSES' FLEECE LINED UNDERWEAR.

16 inch. Regular 50c. garment. **Sale Price35c.**
18 inch. Regular 55c. garment. **Sale Price40c.**
20 inch. Regular 60c. garment. **Sale Price45c.**
22 inch. Regular 65c. garment. **Sale Price50c.**
24 inch. Regular 70c. garment. **Sale Price55c.**
26 inch. Regular 75c. garment. **Sale Price60c.**
28 inch. Regular 80c. garment. **Sale Price65c.**
30 inch. Regular 85c. garment. **Sale Price70c.**

FLEECE COTTON DRESSING GOWNS—In Kimono style with half sleeves and square pointed collar finished at edge with one inch wide Satin edging. Some with frill of silk at the collar and self adjusting shirred waist. Beautiful for 1 designs. Reg. \$5.40 each. **Friday and Saturday\$4.44**



Beautify Your Home With A CARPET SQUARE!

When you enter a home do you not enjoy seeing the soft warm glowing of a beautiful carpet square? You love your wife and children. "Home" is their greatest pride. Then make it beautiful for them by the addition of a well chosen Square.

ON FRIDAY AND SATURDAY WE OFFER TWO OF OUR LEADERS.

TAPESTRY CARPET SQUARES—A splendid quality that will give great service and wear. Several beautiful patterns to choose from; size 9 x 12 feet. Regular \$57.50. **\$50.00 each. Friday and Saturday**

VELVET PILE SQUARES.—Handsome Oriental designs and rich color combinations that will suit almost any room; size 9 x 12 feet. Regular \$90.00 each. **Friday & Saturday\$79.00**

The Royal Stores Ltd.

Sweaters Mackintoshes, etc.



WOMEN'S ALL-WOOL SWEATER COATS—In plain Saxe, Rose, Corn, White and Black; also two color effects. In almost a dozen different styles. You will undoubtedly find here just the style and color that suits your fancy. Reg. \$10.25 each. **Friday and Saturday\$8.50**

ANOTHER LINE OF WOMEN'S SWEATER COATS.—Mostly with brushed wool collars in sailor style, and belts to contrast with body in both material and color. They are certainly a stunning lot. A big supply of Paddy Green for St. Patrick's Day. Reg. \$11.25. **Friday and Saturday\$11.25**

MEN'S GREY COTTON SWEATERS.—With shawl collar and two side pockets; sizes 40, 42 and 44 only. Exceptional value. Regular \$1.50 each. **Sale Price\$1.20**

WOMEN'S SILK SCARVES.—Of fine quality, pure thread silk with long silk fringed ends, assorted widths and lengths. Colors: Coral, Grey, Crimson, Navy, Pale Blue, Reseda, etc. Regular \$2.50 each. **Friday and Saturday\$2.05**

DIRECTOIRE KNICKERS—Fleeced Jersey in Saxe and Navy with self-adjusting elastic waist and knees. Reg. \$2.00. **Friday and Saturday\$1.59**

\$13.50 MACKINTOSHES FOR \$8.00

Stylishly cut and well made in every particular are these beautiful shepherd check coats. The colors make them equally suitable for dry or wet days. The slash pockets and cuffs are nicely finished with buttons to match. The collar is of black silk with edging of self-material. Regular \$13.50 each. **Friday and Saturday\$8.00**