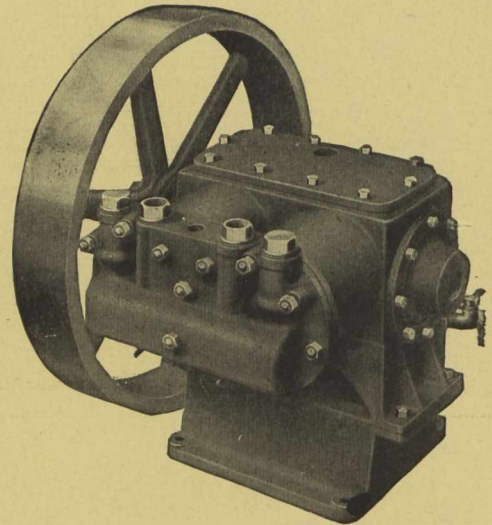


Westinghouse Belt-Driven Compressors

Compact, efficient, reliable.
May be controlled by an
automatic governor.

The only difference between our
belt-driven and motor-driven com-
pressors is the substitution of a belt
wheel for the motor.



Our nearest office will give full particulars.

Canadian Westinghouse Company, Limited, Hamilton, Ontario

TORONTO MONTREAL OTTAWA HALIFAX FT. WILLIAM WINNIPEG CALGARY EDMONTON VANCOUVER
Traders Bank Bldg. 52 Victoria Square Ahearn & Soper, Ltd. 105 Hollis St. Telfer Bldg. 158 Portage Ave. E. Grain Exchange Bldg. Dominion Bldg. Bank of Ottawa Bldg.

Nova Scotia Steel and Coal Co., Limited

Manufacturers of

MARINE, RAILWAY AND GENERAL ENGINEERING FORGINGS OF ALL
SHAPES AND UP TO 40 TONS IN WEIGHT, MADE FROM BEST ORDINARY
OR HARMET FLUID COMPRESSED OPEN-HEARTH STEEL. OUR FORGE
IS EQUIPPED WITH THE MOST MODERN STEAM HYDRAULIC PRESSES.

RAILWAY TRACK MATERIAL, fish plate, tie plate, track bolts, spikes, tee rails—12
to 40 lbs. per yard.

ROLLED STEEL FOR CAR BUILDERS' USE: Spring, machinery, tire, angle, and
merchant bar steel, bright compressed shafting, rivets, tank plate—12-gauge up to 1" and 50" wide
cold twisted steel bars for reinforced concrete work.

ALSO MINERS AND SHIPPERS OF THE CELEBRATED "OLD SYDNEY" COAL.
HIGH CALIFORIC VALUE—LOW ASH—UNEXCELLED FOR STEAM-RAISING PURPOSES.
BEST HOUSE COAL MINED IN CANADA.

Collieries, Iron and Steel
Furnaces:
SYDNEY MINES, C. B.

Coal Shipping
Piers:
NORTH SYDNEY, C. B.

Finishing Mills, Forge, and
Engineering Shops:
NEW GLASGOW, N.S.

ENQUIRIES SOLICITED

Western Steel Sales Office
Room 14, Windsor Hotel,
Montreal, Que.

Western Coal Sales Office:
219, Board of Trade Bldg.,
Montreal, Que.

Head Office:
NEW GLASGOW, N.S.