

**THE
North American Life
Assurance Company**

1906.

INCOME \$1,746,544.00
An Increase over 1905 of \$86,480.00.
ASSETS 7,799,064.00
An Increase over 1905 of \$831,050.00.
NET SURPLUS 650,209.00
An Increase over 1905 of \$80,199.00.

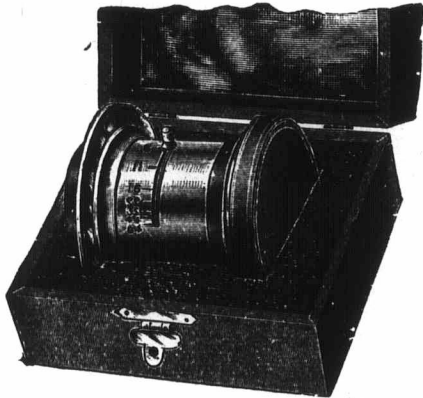
The large increase in these important items shows that the unexcelled financial position of the Company has been maintained during the year.

Correspondence invited regarding Agencies in unrepresented Districts.
HOME OFFICE, TORONTO, ONT.

Established 1875.

**E. SADLER
& SONS**

LENS CAP
MANUFACTURER



Enlarging Screens, Iso Screens, Lens Cases, Stop Cases, &c., &c.

**34½ Great Hampton Street,
BIRMINGHAM, ENGLAND.**

Special prices to Canadians under the New Tariff.

Individual Evening Instruction

ON
MONDAY, WEDNESDAY AND FRIDAY EVENINGS
AT



Renouf Building, Cor. St. Catherine and University Streets.

Book-keeping, Arithmetic, Penmanship Shorthand, Type-writing, Correspondence English, French, Civil Service, etc. Students select their subjects and are taught separately by nine expert teachers. Write, call or telephone Up 151 for Prospectus and new price list. Address :

J. D. DAVIS,
Renouf Building, Cor. St. Catherine and University Sts., MONTREAL.

FLYNN BRO'S & CO.

MANUFACTURERS OF



**WROUGHT IRON and
COPPER GOODS...**

Art Metal Workers,

PAUL PRY WORKS,
NEW SUMMER STREET,
Birmingham, - Eng.

**OFFORD &
WILSON,**

Manufacturing
Electrical Engineers

98 Woodcock St. BIRMINGHAM, Eng.



Theatre

Lighting

Accessories

Complete Light Box set, with Lamp, Crutch, Condenser, and Mediums.

J. W. NICHOLSON & SONS.

MANUFACTURERS OF

**DOG COLLARS, WATCH
GUARDS & PURSES.**

Station Street. WALSALL, England.

Special Prices to Canadians under the New Tariff.

WALTER MIDDLETON
ENGLAND

DIE SINKER TOOL MAKER.
STAMPER & PIERCER
CHECKS & LABELS
METALLIC
LETTERS
JEWELLERS PUNCHES
WING & BERT SEALS
DOOR
PLATES
&c.

STEEL NAME &
LETTER PUNCHES.
BRASS TOOLS FOR
GILDING
ON LEATHER & SATIN
CYCLE PLATES
BRANDS
TRADE MARK

104, VYSE ST., BIRMINGHAM
ENGLAND

The Fe

HEAD OF

Capital and Ass
Assurance writ
Paid Policyhold

H. RUSSELL F

**Ge
Be**

The Manuf

He

WAL

PEARL BUTTON
MANUFACTURER



BIRMIN

MUDGUARD

R
and G

The Was

158 Hockl