



Vol. XIX.—No. 937.]

DECEMBER 11, 1897.

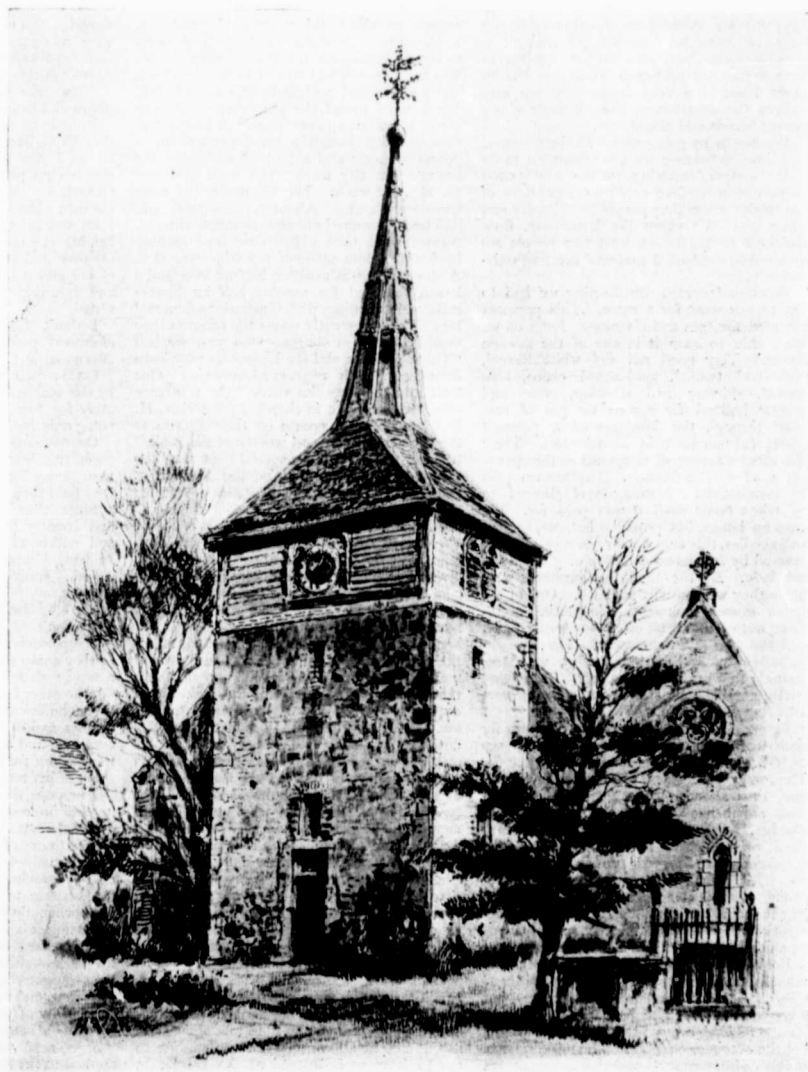
[PRICE ONE PENNY.

TYPICAL  
CHURCH  
TOWERS  
OF  
ENGLISH  
COUNTIES.

PART III.  
SURREY.

SURREY is not a good county in which to study ecclesiastical architecture, for although it possesses several large churches, and amongst others that remarkably beautiful edifice, Saint Saviour's, Southwark, yet none of its important churches show any marked characteristics, and even its smaller churches partake quite as much of the architectural peculiarities of the adjoining counties as of that in which they stand; this is especially the case with their towers. Thus those of St. Saviour's and Lambeth Church might just as well be in London as where they are. Then also as Surrey was a poor, very sparsely populated county in the Middle Ages, covered in part by forests, and elsewhere by heath, characteristics which are still to be noticed in that stretch of country between Sheire and Cranleigh, which is nearly all forest, or those vast expanses such as Blackheath near Chilworth, the ancient churches were very humble structures, but in later years its beautiful and wild scenery has attracted the opulent and well-to-do to set up their houses here, and owing partly to this circumstance, and partly, no doubt, to the fact that the old churches, being poorly built from the first, had fallen into a ruinous condition, few of them remain. Sheire, Cranleigh, Ewhurst, Godalming, St. Peter's,

*All rights reserved.]*



THAMES DITTON, SURREY.