

U. candidates prepare for election

Melinda Bang, Rep slate

Faculty of Physical Education and Recreation

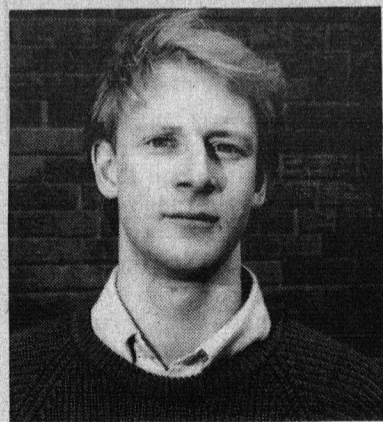
- Executive, Students' Association for Health, Physical Education and Recreation.
- Social Coordinator, Western Canadian SAHPER Conference.
- 2 years Recreation Program Director, Cabri County, SA.
- Lister Hall Senior Sports Council Representative.
- Red Cross Volunteer.



Aruna D'Souza, D'89 slate

Faculty of Arts, History

- Housing and Transport Commissioner in 1988-1989. Chair of the Housing and Transport Commission, member of many university boards and committees including the Council on Student Services, Facilities Development Committee and the Housing and Food Services Administrative Council.
- active in a number of campus clubs.



Ian Squair, Rep slate

Faculty of Engineering, Mining Engineering

- 3 years on staff of The Bridge, including one year as Editor.
- Vice-President Finance, Voyager Consulting.
- Engineering Students Society Representative for APEGGA Members' Liaison Committee (professional engineering association).
- Co-Coordinator, Mineral Club Technical Display.



Peter Chu, D'89 slate

Faculty of Arts, Economics

- President of Asian Pacific Opportunities Society.
- Student Representative in the Department of East Asian Language and Literature.
- Faculty of Arts Academic Affairs Committee.
- Past Co-chair of the Student Gift Fund.
- Student Placement Consultant, Career and Placement Services.
- Business Manager, Chinese Students' Association.

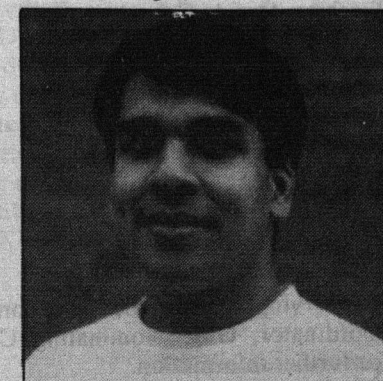


VP Academic

Rob Cole, Rep slate

after degree in the Faculty of Business, Faculty of Arts, Psychology

- Special Projects Coordinator and Finance and Administration Analyst, Interprovincial Pipeline.
- Community Liaison, Edmonton Federation of Community Leagues.
- Fundraiser, United Way.
- Fundraiser, Firefighters' Burn Treatment Unit.
- Department of Athletics, Steve Fonyo Fundraising drive.



Suresh Mustapha, D'89 slate

Faculty of Science, Honours Genetics

- GFC Science representative.
- SU Science councillor.
- GFC Undergraduate Scholarship Committee Member.
- GFC Discipline and Impaneling Board Member.
- GFC University Appeals Board Member — deals with student appeals of faculty academic disciplinary decisions.
- SU Mandate Committee Member.

Board of Governors

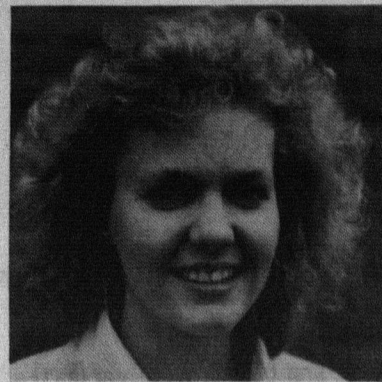


Steve Twible, Independent

Faculty of Arts, Political Science

- Board of Governors, Board Building Committee, 1988-1989.
- General Faculties Council.

- SU vp finance and administration, 1987-1988.
- Council of Student Services Occupational Health and Safety.
- Career and Placement Services.
- Presidential Search Committee (selects candidates for U of A president).



Kimberley Rogers, D'89 slate

Faculty of Arts, Political Science

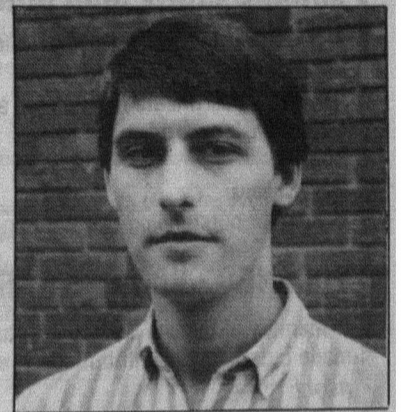
- Arts Representative to Students' Council.
- member of Nominating Committee and Academic Affairs Board.

- past Floor Coordinator with Lister Hall Students' Association.

Kevin Klapstein, Rep slate

Faculty of Science, Honours Physics

- President, Undergraduate Science Society.
- 2 years, Students' Council.
- Students' Council Ethics Committee.
- Bylaws and Constitution Committee.
- External Affairs Board.
- Nominating Committee.
- Science Faculty Council.
- Science Faculty, Academic Appeals Board.



Does Your Association need "Fundraising or Functions"?

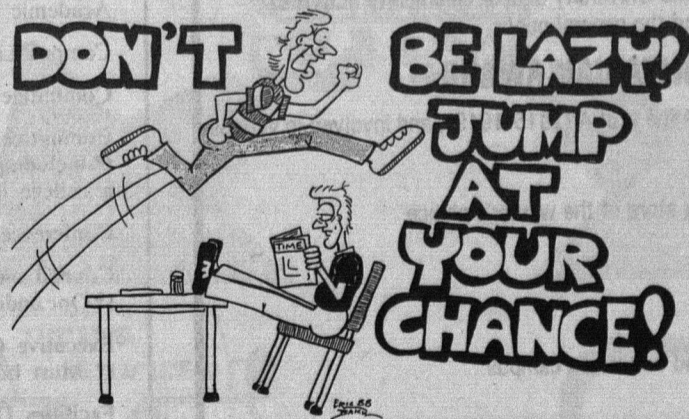
- Nurses Socials
- Law Parties
- Etc.

Call Paul at Club Malibu

432-7300

431-2461

WHAT CAN YOU DO WITH A UNIVERSITY DEGREE??



Find Out by Attending **CAREER AND PLACEMENT SERVICES**

FREE SEMINARS ON

**CAREER PLANNING
RESUMES**

**JOB TARGETING
INTERVIEWS**

Look for CaPS Bright Yellow Posters in Your Faculty
Or Visit CaPS on the 4th Floor of the S.U.B. - 492-4291

SUMMER AND PERMANENT POSITIONS ARE POSTED NOW!