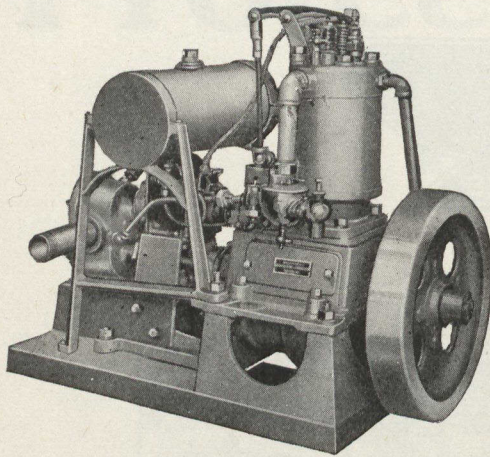


Wonder Portable Forest Fire Unit



Engine, 4 Cycle, 4 H.P.

EQUIPPED WITH

High Tension Magneto and Impulse Starter

Engine Speed 600 to 850 R.P.M.

Pump Capacity 40 to 45 Gallons per minute

Guaranteed Head 200 to 250 feet

Suction 2", Discharge 1½"

UNIT Carried easily by TWO MEN

Manufactured Entirely in Canada by

Wonder Pump and Engine Co., Limited, Vancouver, B.C.

Eastern representatives

THE A. R. WILLIAMS MACHINERY COMPANY, LIMITED,

TORONTO

MONTREAL

ST. JOHNS, N.B.

MARCONI WIRELESS

TELEGRAPHS - TELEPHONES

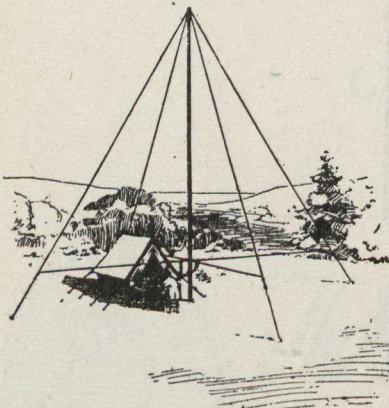
For Forestry Work:

Portable and

Semi-Portable Outfits.

Aeroplane Equipment.

Motor Launch Sets, Etc.



The Marconi Wireless Telegraph Co., of Canada, Ltd.

Marconi Building, Montreal

Dominion Building, Vancouver, B.C.

Arcade Building, Halifax, N.S.

93 King Street, East, Toronto

240 Water Street, St. John, Nfld.