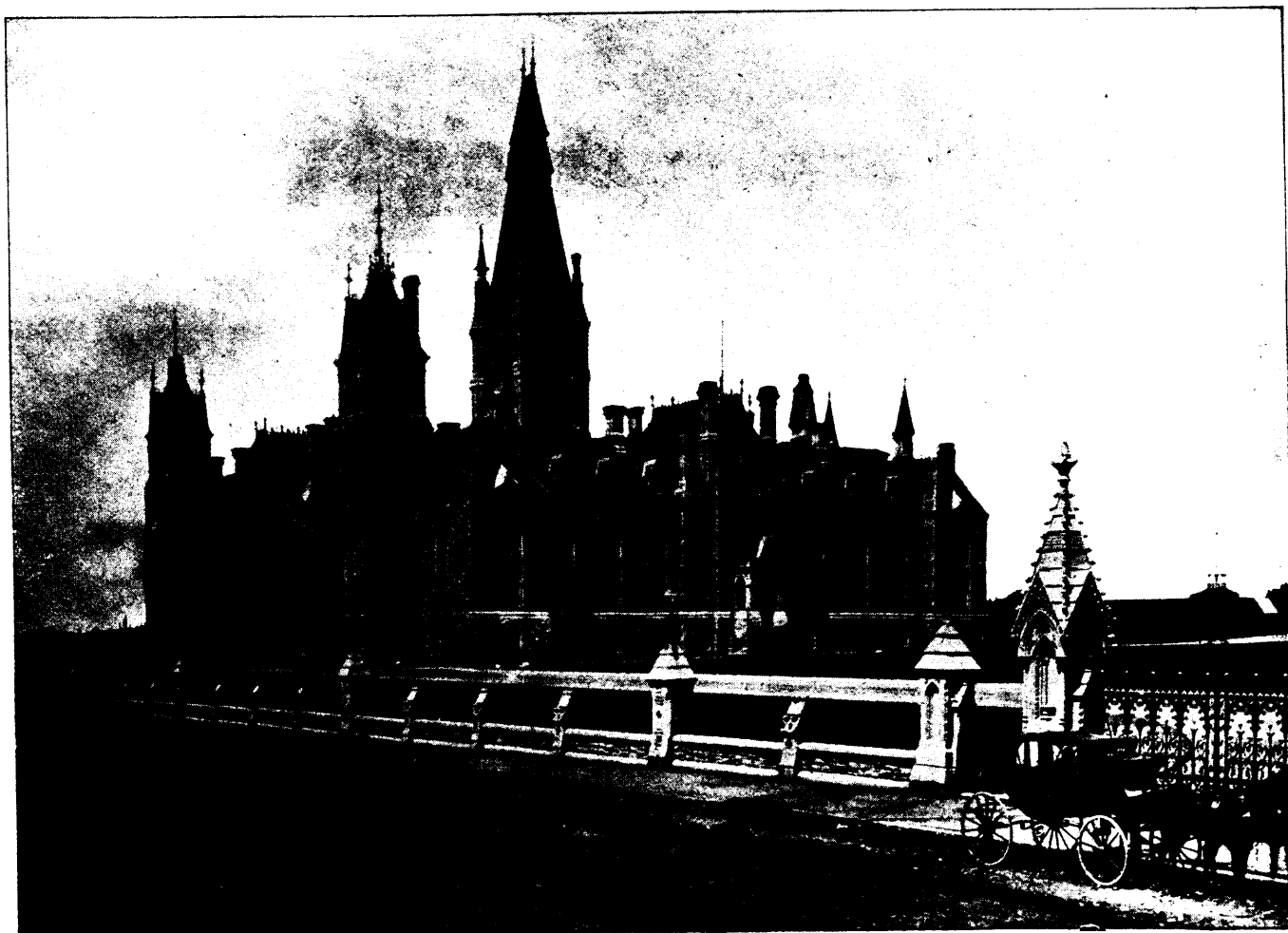


A. R. C. SELWYN, C.M.G., LL.D., F.R.S.,  
DIRECTOR GEOLOGICAL AND NATURAL HISTORY SURVEY OF CANADA.  
From a photograph by Topley.



F. N. GISBORNE, C.E.  
SUPERINTENDENT GOVERNMENT TELEGRAPH AND SIGNAL SERVICE OF CANADA.  
From a photograph by Topley.



WESTERN DEPARTMENTAL BLOCK, GOVERNMENT BUILDINGS, OTTAWA.

From a photograph by Topley