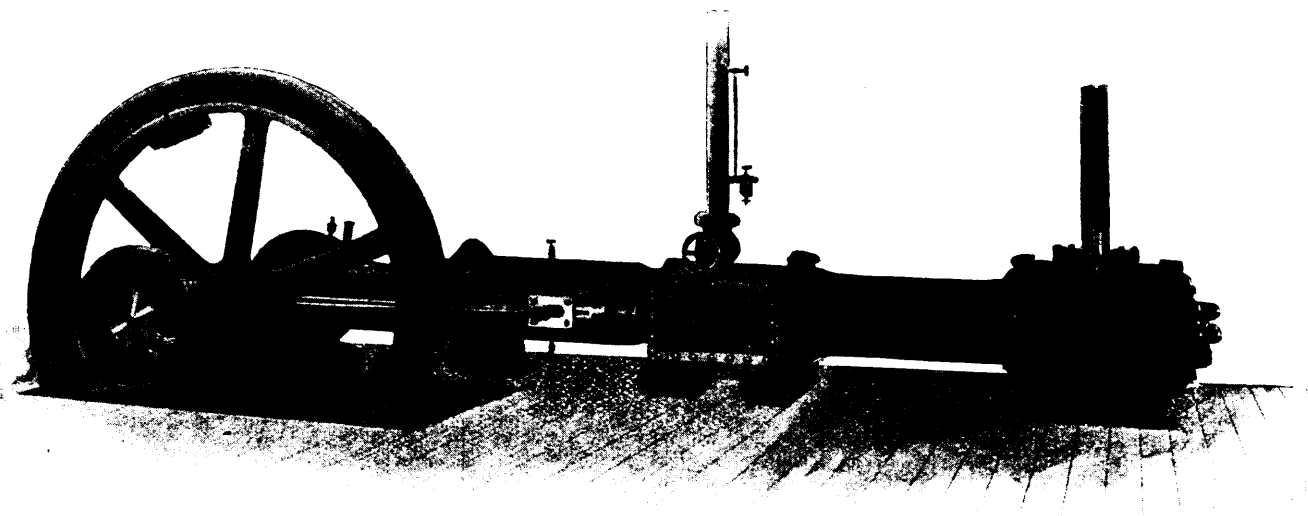


# THE CANADIAN RAND DRILL CO

MANUFACTURERS OF

**Rock Drills, Air Compressors  
and General Mining Machinery**



This cut illustrates the first half of a Rand class "B" air compressor. We recommend the installation of a first half whenever there is a probability of increased capacity being required later on. When second half is added, machine can be compounded on the steam end, on the air end, or made compound steam and compound air.

**EASTERN BRANCHES**  
MONTREAL, QUE.  
TORONTO, ONT.  
HALIFAX, N.S.

**HEAD OFFICE & WORKS.**  
**SHERBROOKE,**  
QUEBEC.

**WESTERN BRANCHES**  
ROSSLAND, B.C.  
GREENWOOD, B.C.  
VANCOUVER, B.C.  
RAT PORTAGE, ONT.