

FIRST PRIZE
\$250.00

ADD THEM UP

120 PRIZES
OFFERED

The St. John Standard's Great Puzzle Contest

No Trick or Chance Involved. Only Accuracy and Patience Required in Solving This Problem

START NOW

Both Old and New Subscribers Can Compete This Contest Offers Equal Opportunities To All

Note Carefully the Plan of **DIVIDEND PRIZES** Make Them Worth What You Please

How To Enter

This contest is open to any person residing in the Maritime Provinces and to all others who may be within reasonable reach of The Standard office by mail.

A payment on subscriptions to the Standard, Daily or Semi-Weekly, of from \$1.00 to \$6.00, entitles the contestant, to submit a solution of the puzzle.

The amount of money paid in will cover the subscription price for the paper according to the regular rate whether the rate be for city delivery or by mail.

AS MANY DIFFERENT SOLUTIONS MAY BE SUBMITTED AS THE CONTESTANT DESIRES, UPON MAKING AN ADDITIONAL PAYMENT WITH EACH ONE, BUT NOT MORE THAN \$6.00 CAN BE PAID WITH ANY ONE SOLUTION.

It is not necessary to pay the same amount with each solution if more than one be submitted.

As the prizes have an added value according to what is paid in on subscription with the winning solution, contestants should familiarize themselves with the dividend schedule before sending in their subscriptions and their solutions.

Remit by check, money order or registered letter.

Whatever is paid, whether on the one or on a number of solutions will apply on one continuous subscription to The Standard.

Solutions not accompanied by cash subscriptions will not be registered.

This contest is open to both old and new subscribers.

The Puzzle

The problem is to ascertain the total of the figures in the puzzle chart.

Just add them up as if they were in one, long column under each other.

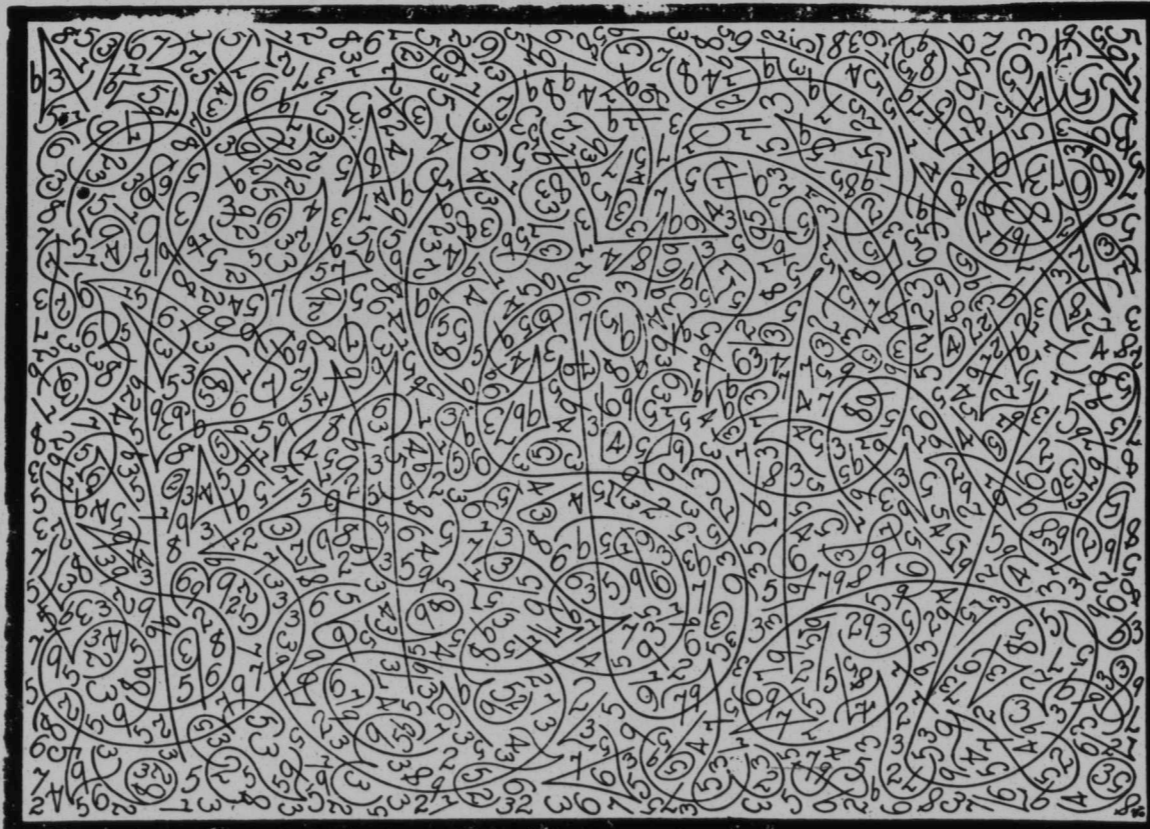
The figures run from 2 to 9. THERE ARE NO DOUBLE FIGURES and no characters which are not figures. The tail of the "9's" is a decided curve, while the tail of the "9's" is straight. All the other figures have their usual characteristics. So there is no intent to allow any question to arise over the identity of a figure.

In the event that no one ascertains the exact total, the prizes will be awarded for the nearest correct solutions.

Subscription Values

DAILY STANDARD	
By mail 6 months	\$1.50
" " 12 "	3.00
SEMI WEEKLY STANDARD	
By mail only, 12 months	\$1.00

What's The Total of These Figures?



Here is the Prize List !

120 prizes are offered which together form a total of \$1310.00. The amount of each individual prize will to some extent depend upon the amount of money sent in by the individual winners. The prizes are as follows:

- FIRST PRIZE**
\$100.00 in gold to which will be added twenty-five times the amount paid in by the subscriber with the winning solution. This prize may be worth \$250.00.
- SECOND PRIZE**
\$50.00 in gold to which will be added twenty times the amount paid in by the subscriber with the winning solution. The value of this prize may be \$170.00.
- THIRD PRIZE**
\$30.00 in gold to which will be added ten times the amount paid in by the subscriber with the winning solution. The value of this prize may be \$90.00.
- FOURTH PRIZE**
\$20.00 in gold to which will be added ten times the amount paid in by subscriber with the winning solution. This prize may be \$90.00.
- FIFTH PRIZE**
A fixed amount of \$30.00 in gold without any additional dividend.
- FIVE PRIZES**
Five prizes of \$10.00 each to which will be added two times the amount paid in by the subscribers with winning solutions. Each of these prizes may be worth \$22.00.
- TEN PRIZES**
Ten prizes of \$5.00 in gold to which will be added the amount paid in by subscribers with the winning solutions. Each of these ten prizes may be worth \$11.00.
- FIFTY PRIZES**
50 prizes of \$1.00 each to which will be added the amount paid in by the subscribers with the winning solutions. These prizes may be worth \$7.00 each.
- FIFTY PRIZES**
Fifty other prizes of \$3.00 each without any additional dividend.

This Whole Prize List Makes a Total of \$1,310.00 Divided into 20 Prizes

Contest Closes Saturday, November 8th, 1913

Always use the solution blank and read it carefully before filling out. Write your name and address plainly.
The payment of from \$1.00 up to \$6.00 on your subscription allows you one solution; but the payment of \$6.00 on your subscription gives you one solution and six times as much in dividends.
An additional payment of from \$1.00 up to \$6.00 entitles you to another solution.
Remember, the larger the amount you pay on your subscription the larger will be your dividends should you win one of the dividend prizes.
Study the first prizes and dividends offered and send in your solution to-day.
No one associated with The Standard in any way will be allowed to enter this contest.

Solution Coupon

Cut out this blank smoothly around the border and send it in as soon as possible with your solution and money.

Date sent 1913

ST. JOHN STANDARD.

Amount enclosed \$.....

Subscription to Standard.
(State whether Daily or Semi-Weekly)

Are you at present a subscriber to the Daily Standard?

Are you at present a subscriber to the Semi-Weekly Standard?

If you wish the paper sent to someone other than yourself fill in the name and address here.

Name.....

Address P. O.

..... County

SOLUTIONS AND PAYMENTS

The following space provides for six solutions with the payments you desire to make with them. You may submit one or as many different solutions as you wish. You can pay from \$1.00 to \$6.00 with each solution. The total will apply on one continuous subscription, excepting that not more than \$3.00 will be accepted as a continuous payment to the Semi-Weekly Standard. All persons sending in more than \$3.00 whether in one payment or at different times, will be sent the Daily Standard.

Solution	Amount
.....	\$
.....	\$
.....	\$
.....	\$
.....	\$
.....	\$

Name of sender.....

Address

..... County

Address All Enquiries, Solutions, Etc., to

The Puzzle Editor, The Standard, St. John, N. B.