

**Metallic Nickel.** 98.40—99.00%

**Shot**  
HIGH AND LOW CARBON

**Ingots**  
25 LB. AND 50 LB. SIZES

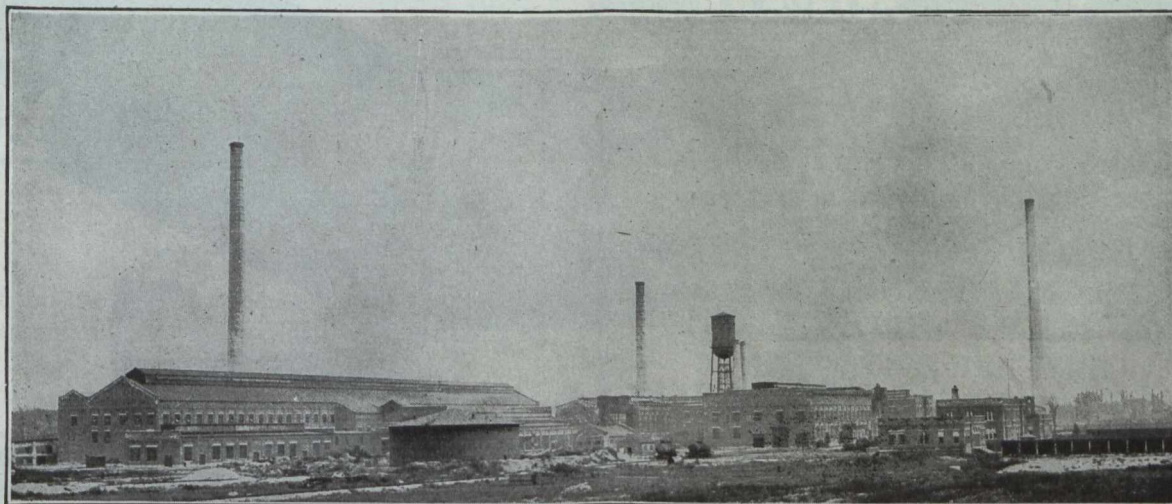
**Nickel Oxide** 77.2%



PRIME METALS OF UNIFORMLY HIGH QUALITY  
AND HIGH NICKEL CONTENT FOR THE MANU-  
FACTURE OF NICKEL-STEEL, NICKEL-SILVER,  
ANODES AND ALL REMELTING PURPOSES.

*Our best technical advice is at your service.*

THE HOME OF INCO NICKEL



Refining Division

Port Colborne, Ont.

**The International Nickel Company of Canada, Limited**

HARBOR COMMISSION BUILDING

**Toronto, Ont.**