

"My New 'George' Shingle Is Good for 100 Years. Use it and my Corrugated Iron on Your Barn. Save the Cost of Wood."

"HERE is my big 'George' Shingle in metal, just put on the market. Every shingle covers 4 square feet. It is the most economical roof for a barn to-day, because it saves costly labor in laying, needs no repairs, requires no paint, and is good for 100 years of service." *G. H. Pedlar*



"I AM making one metal shingle to-day which is used all over the world. I have just started making for sale a new and bigger shingle. This was invented by my son, the late George H. Pedlar, Jr., to cover the big roof surface of the modern barn."

"This shingle is made in 100-year metal. I found a metal that wouldn't rust on a roof, after a life-long search. I looked for that

metal for 50 years. To-day you can buy it in my shingle."

"You, and I, and my son, realized how lumber is getting scarcer, high in price, and wood shingle much poorer in quality as the years go on. Lumber is used in barns to-day that would not be looked at twenty years ago. Labor asks much higher wages."

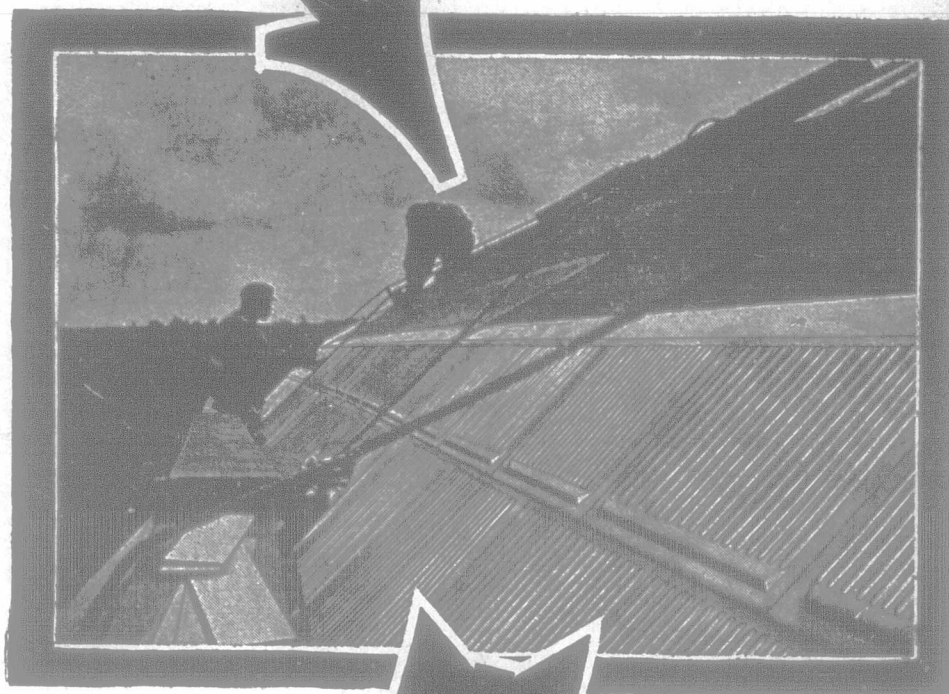
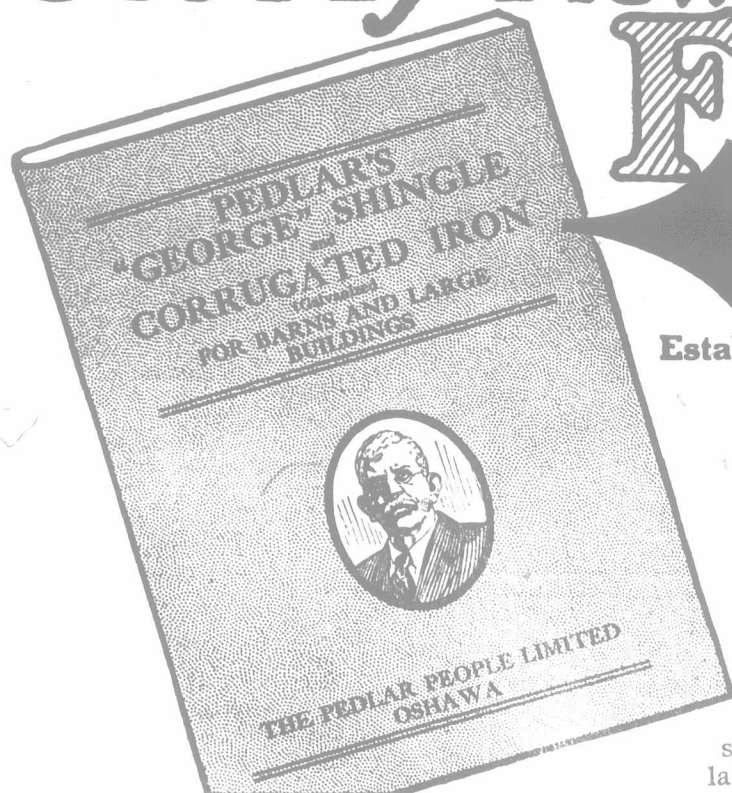
"To-day, my 'George' Shingle on the roof, and sheets of my galvanized, corrugated iron on the walls, instead of boards, makes you a better barn at less cost than an all-wood barn properly painted. It saves in the labor needed."

"I am ready to help you build a better barn than you planned, and yet save you money. Use my 'George' Shingle and my corrugated iron, and you save so much in lumber bills, repairs and paint, and labor of construction, that it pays to use my fireproof material. You get a better barn at an astoundingly moderate figure."

"I have just written you a book about this. It shows how one of these new barns is built. My galvanized, corrugated iron is used on the walls and my 'George' Shingle on the roof."

"Won't you send to me for this book, friends? I will be glad to send it anywhere. It probably will help you. It shows the most economical way to build a barn now-a-days. Write a post card for it." *G. H. Pedlar*

Get My New Book FREE



WHY I MADE UP THIS NEW 'GEORGE' SHINGLE

"My new, big shingle is made for big barn roofs. The average barn is getting bigger every year. By using a large metal shingle on a big barn roof, the owner saves so much in labor of applying, when compared with wood, that the metal shingle becomes immediately the more economical article."

"At one stroke, I made it possible for any farmer to get a fireproof, lightning-proof and timeproof roof, which would last 100 years, with a big saving in wages, repairs, paint and upkeep."

The PEDLAR PEOPLE

Established 1861

OSHAWA, CANADA

Limited 328

TORONTO
113 Bay Street
LONDON
86 King Street
CHATHAM
200 King St. W.
LETHBRIDGE
1262 1st Ave. So.

MONTREAL
321-3 Craig St.
OTTAWA
432 Sussex St.
QUEBEC
127 Rue du Pont
EDMONTON
563 3rd St. W.

ST. JOHN, N.B.
42-46 Pr. William St.
HALIFAX
16 Prince St.
SYDNEY
194-208 George St.

PORT ARTHUR
45 Cumberland St.
WINNIPEG
76 Lombard St.
SASKATOON
Box 1645
VANCOUVER
108 Alexander St.

MOOSE JAW
202 Fairford St.
MEDICINE HAT
-- Toronto St.
CALGARY
Rm. 7, Crown Block
VICTORIA
434 Kingston St.

Address nearest Warehouse for "George Shingle," Book No. 150,

OTHER PEDLAR FARM HELPS BESDIES SHINGLE

Remember that we make metal culvert for your ditches, drains and as well curbing; art metal tile for your kitchen to prevent fire; metal ceilings for your church, school or home; metal portable buildings to store machinery, autos, etc., and for a farm blacksmith shop or tool house; flume for mangers and watering troughs or feed troughs; metal lath for your walls. Write about these things, if you need any.