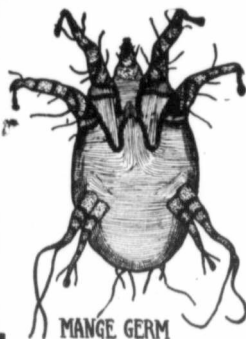


Mange and Skin Germs

Can be cured quickly and permanently by the use of
COWL Brand Drips



PARASITES LIKE THESE are what sap the life and vim out of your stock. The terrible tortures they inflict are practically indescribable. A few applications of

COWL Brand Drips

will make a complete killing of Mange Germs, Lice, Mites, Ticks and all Skin Germs, and will increase the earning power of every animal on your farm.

TRY IT NOW while you have the opportunity of conveniently applying it.

SOLD MOSTLY EVERYWHERE or sent direct at

\$1.25 per gallon

f.o.b. Winnipeg, if you mention your dealer's name. Address Remedies Dept.

Carbon Oil Works Ltd.
WINNIPEG

STANDARD NINE SIZES
Is the only EARTH AUGER that Really Bore

NINE POINTS OF ADVANTAGE
1—Enters hard earth. 2—Has Expansion blade. 3—Holds fine, dry sand. 4—Does not bind in hole. 5—Opens to discharge contents. 6—Bore all conditions of earth. 7—Double "V" point cutting blades. 8—Saves half of the time and effort. 9—Nine sizes in one. Price \$2.50 to \$5.00. If not at Dealers, we deliver. Send for Catalog No. 15. Standard Earth Auger Co., 1125 Newport Ave., Chicago, U. S. A.

Howland Pump Oiler



Used the world over by Engineers and Threshermen.

Delivers oil in any position at the first stroke.

Spouts detachable and interchangeable.

Maple City Mfg. Co.
Monmouth, Ill., U.S.A.

Plant Diseases and Some Remedies

Continued from page 51

satisfactory for use in oats or barley. The formula is approximately 2½ parts of Mercuric bichloride (HgCl₂) to each 997½ parts of water, or approximately 1 lb. of powdered corrosive sublimate to 50 gallons of water. Pile the wheat upon a floor or upon a canvas, and thoroughly spray with a force spray while the grain is constantly shovelled so that it becomes evenly wet over the entire surface. Do not use any more of the solution than necessary to moisten the outside surfaces of the grain. This treatment is the most effective treatment for stinking smut of wheat known to us, aside from the formaldehyde. Corrosive sublimate is a strong poison and should be handled with care.

5. Formaldehyde: Use formaldehyde at the rate of 1 lb. (16 oz. Avoirdupois) to 40 or 50 gallons (U.S.) of water. The grain can be dipped in the solution or sprinkled or sprayed. This treatment is effective against all the smuts except that of corn, loose smut of wheat and loose smut of barley, and is beneficial against all other known seed borne diseases.

If the sprinkling and spraying method is used, in the case of wheat, it is only necessary that sufficient solution be used to dampen the entire outside of the grain. The object is to wet all of the spores that may chance to cling to the grain. In the case of oats or barley the dipping method is preferable in as much as a larger amount of solution comes in contact with the grain and thus may penetrate to all parts beneath the husks. If the work is properly done the wheat may be drilled at once. It is preferable to allow the oats and barley to stand under cover of blankets or canvas for two or three hours before attempting to sow. In the case of flax, the sprinkling or spraying method is preferable. The flax should be stirred very thoroughly while the spray is being thrown upon it. It should be piled and allowed to stand for an hour or so under canvas or blanket after which it should be stirred over and over and then can be seeded at once.

7. Vapor Treatments: There has always been a desire on the part of the farmers to procure some sort of treatment which would make it possible to treat a stream of dry seed by some kind of gas or vapor. There would be advantages in this as it might be possible for the seed to be more rapidly treated and also possible that a vapor treatment would be more effective, reaching all cracks and crevices in the grain coverings, possibly without swelling. This Department conducted a large series of tests with the view of using formaldehyde in the form of vapor treatment. The idea gave promise that it might be quite effective because of the all-pervading action of the gas. It was thought that it was possible that such a method might be very effective for treating grain on a large scale in elevators where the appar-

You'll Get Best Service from the IHC Line of Wagons

WAGONS may look alike when they are new, but they are not all like IHC wagons. IHC wagons are quality wagons which means dividend returns. Would it not be a good idea to investigate this line of wagons?



Hamilton and Old Dominion farm wagons are members of the IHC line. They are quality wagons. They really stand in a class by themselves. They are the exacting farmer's choice. Buy one and you will get more than a dollar's worth of service for every dollar the wagon cost. Investigate these wagons. Make a critical inspection. Compare them with any other wagon now upon the market. You will be surprised at the extra value you will be getting and then you will know why you will get best service from Hamilton and Old Dominion farm wagons.

Hamilton and Old Dominion

wagons are built to meet the conditions found on the Canadian farms. They have a record for satisfactory service.

Hamilton wagon boxes are made of the best grade of poplar and have four binding rods on each side instead of two, the usual number used in less perfectly constructed wagons. With oak sand boards and A-grade oak or hickory spokes and bolsters, one of these wagons is an investment that pays big dividends in a lifetime's service.

Old Dominion Wagons have bottom reinforcement—front and rear. They have eight cross sills securely riveted at each end. Like the Hamilton, the wagon box is constructed of selected and air-dried poplar—the most perfect material for wagon boxes which are used for hauling heavy loads of wheat, corn, etc., because it is less liable to warp and allow the small grain to slip through the crevices.

It will pay you to call on your local International dealer. He will show you a wagon that will best meet your needs. Or, if you prefer, write direct to nearest branch house for a booklet of the wagon in which you are most interested.

WESTERN CANADIAN BRANCHES: International Harvester Company of America at Brandon, Calgary, Edmonton, Regina, Saskatoon, Winnipeg, Yorkton.

INTERNATIONAL HARVESTER COMPANY OF AMERICA
(Incorporated) Chicago, U.S.A.



\$1. SAVED AND \$10. LOST PER DAY



You may save a dollar on first cost of Governor by buying one unsteady in action but you will surely lose many times the difference every day. Loss in work done. Time and Cost in repairs because a racing Governor surely racks an Engine.

"The Governor without Joints" equipped with Speed Changer Secures Stability in Action, Economy in Service and Maximum Durability.

SPEED CHANGER IS PATENTED
And obtained only on Genuine Pickering.

The Pickering Governor Co.
PORTLAND CONN., U.S.A.

Patronize those who patronize this Magazine