

Electric Light, Eyestrain, and the Growing Child

Specialists tell us that most modern ailments are the direct result of eyestrain.

It is a crime to allow a child to read and play under unmitigated electric light.

By the use of MOONSTONE globes and dishes the harsh light is diffused and softened.

It is cheaper, too, than the old way, for less candlepower will produce more illumination, so great is the deflecting and diffusing effect of this chemically perfect glass.



No. 9070. Grecian Lantern.

Write for our

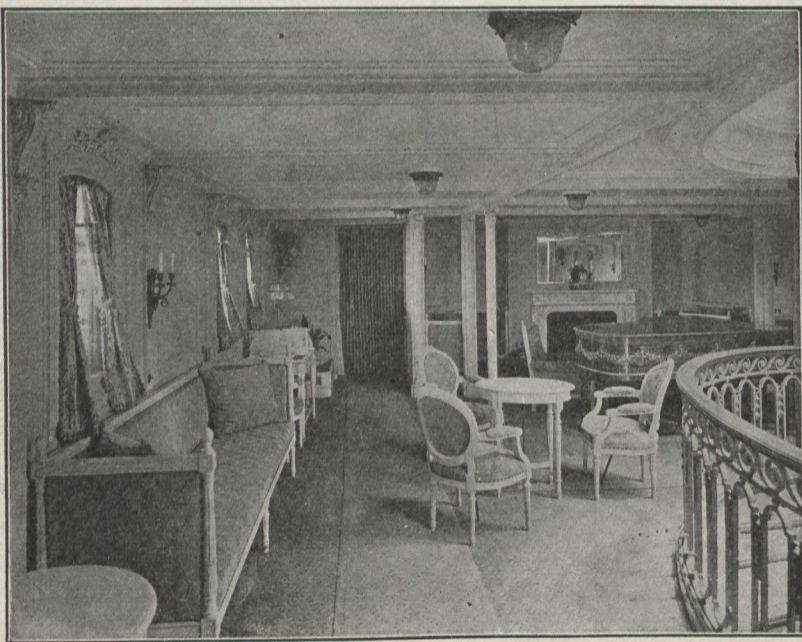
MOONSTONE BULLETIN No. 1

will prove interesting and instructive reading. Give us your room dimensions and our engineering department will tell you, without cost to you, how to light your whole house with a clear and mellow effulgence that will save eye and nerve strain, and work out a material economy at the same time.

Made in Canada.

Jefferson Glass Company, Limited

388 Carlaw Avenue, Toronto



Canadian Northern Steamships

LIMITED

R.M.S. Royal Edward

R.M.S. Royal George

*Cabins de Luxe — Suites and Rooms
With Private Baths, at Rates That Appeal.*

For all information apply to Steamship Agents or 52 King Street East, Toronto, Ontario; 226 St. James Street, Montreal, Quebec; 583 Main Street, Winnipeg, Manitoba.



Throwing a Stone Into a Pond

produces a series of ripples in ever-widening circles that stretch out and out until they finally reach right up to your own feet at the water's edge.

Every time you purchase something "Made in Canada" you start a ripple of prosperity—reaching out in ever-widening circles, through shopkeeper, wholesaler, manufacturer, farmer, right back to yourself; for no matter what you yourself produce, what occupation you are engaged in, your individual prosperity is dependent on the general prosperity of the country—on keeping every Canadian busy.

Dollars spent for Canadian made goods help to do this; some of the dollars spent for Canadian-made goods are bound to come back to you—all of the dollars spent for imported goods are gone—are starting a ripple in someone else's pond.

**Start a Ripple of Your Own by Saying
"Made in Canada"**

4A

CANADIAN PACIFIC WINTER TOURS

TO THE LAND OF

Sunshine and Summer Days

CALIFORNIA, FLORIDA, LOUISIANA, Etc.

Limited trains leave Toronto daily, making direct connection at Detroit and Buffalo for the Southern States, and at Chicago for California, etc.

Those contemplating a trip of any nature should consult Canadian Pacific Ticket Agent, who will be pleased to quote rates, arrange reservations and attend to all details in connection with your trip; or write

M. G. MURPHY - District Passenger Agent - TORONTO

Electric Service

Means comfort, convenience, economy, and safety. The home that is completely equipped with electrical devices is a happy one.

All the drudgery of housekeeping is eliminated by electricity.

You can wash, iron, sew, sweep, cook, keep cool in summer and warm in winter, by means of electrical apparatus designed especially to relieve you of unnecessary and fatiguing labor.

At our showrooms all these devices are ready for your inspection. Competent demonstrators will operate and explain them for you.

The Toronto Electric Light Co., Limited

"AT YOUR SERVICE"

12 Adelaide St. E.

Telephone Adelaide 404