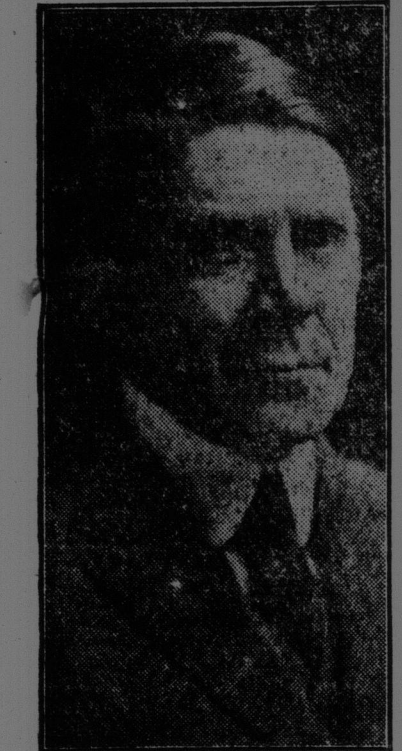


ENGLISH FIRM ORDERS MANY RUGGLES TRUCKS

C. R. Clark, representing a large British automotive firm in London, England, made a very careful inspection tour of the Ruggles Motor Truck Company's plant and carefully went over the Ruggles models Feb. 12, 13 and 14. Mr. Clark was very high in his praise of the Ruggles trucks and the factory, the Ruggles organization and the splendid progress



FRANK W. RUGGLES, president Ruggles Motor Truck Company, Limited, London, Ont.

made since its organization. Firm orders were given for all models of trucks for immediate shipment, and schedules were presented for future deliveries in the immediate succeeding months up to June.

RICH CUT GLASS

We are now showing an attractive assortment of designs in Cut Glass which is noted for its richness and brilliancy of its coloring.

O. H. Warwick Co., Limited
78-82 King Street

The combined interests in London which Mr. Clark represents have within the last nine months imported into England more than 700 trucks. A luncheon was given Mr. Clark by the directors and executives of the Ruggles Company at the London Club on Monday, Feb. 14, at which Mr. Clark expressed his full appreciation of the treatment and reception given him by the Ruggles Company. Mr. Clark was firm in the belief that when exchange becomes normal again the Ruggles trucks would quickly gain a firm standing throughout the British Empire.

LOCAL NEWS

SPECIAL EVANGELISTIC SERVICES
In connection with German St. Baptist church will be continued every evening this week except Saturday, in the institute adjoining the church. The pastor will be assisted by Rev. D. E. Hatt, 22552-3-16

Absolutely solid leather boots, for men and boys, at the lowest market prices, at Bassen's, 14, 16, 18 Charlotte St. We have no branches.

J. S. Gibson & Co. have all sizes of hard coal. M. 2885 or 294. 1-25 if

REGULAR \$8.00 SILK STOCKINGS, \$1.19 PAIR.
This is a special purchase and represents the utmost in value for your money—not seconds, but perfect stock. Fall fashioned, seamless, elastic tops, in navy blue, black, nigger brown and white.

either plain or fancy face styles. Regular \$8.00 quality, now selling at \$1.19 pair. F. A. Dykeman Co. 8-17

SEAMAN'S INSTITUTE.
Metagema Concert Party, Tuesday night, eight o'clock. Bigger and better than ever. Prices as usual, 20 and 25c. 22023-3-16

Don't forget that prices are sliding downward. Don't you buy blind. We are sliding prices day by day at the always busy store, 14, 16, 18 Charlotte St. We have no branches.

WHO WANTS NAVY BLUE SERGE?
Here's the chance of the season to secure a real bargain, and just in time, too, for those figuring on a smart navy suit for spring. Thursday, Friday and Saturday of this week will be displayed on

our counters, several hundred yards of all pure wool navy blue botany serge, 34 inches wide. This is a good heavy weight, with a beautiful soft finish. Two qualities will be offered—a regular \$4.85 quality for \$2.95 yard, and regular \$5.75 quality for \$3.75 yard. Both of which are fast dye and will make into splendid suits. F. A. Dykeman Co. 8-17

Shamrock tea and sale, Central Baptist church, Thursday, March 17th.

CHASE & SANBORN'S CEYLON AND INDIA TEA
Is the result of fifty years of constant study to bring to the discriminating tea drinker the very best to be found in the tea gardens of the Far East.

In the flavor, aroma and golden liquor of Chase & Sanborn's Ceylon & India Black Tea can be read all the ceaseless care with which the plants have been tended and guarded against impairment and impurity. Sold in half and one pound packages, sealed against air and touch.

CHASE & SANBORN, Montreal, Que.

PAINLESS EXTRACTION Only 25c.



We Make the Best Teeth in Canada at the Most Reasonable Rates.
Boston Dental Parlors
Head Office: 527 Main St. Phone 683
Branch Office: 35 Charlotte St. Phone 383
Dr. J. D. MAHER, Prop.
Open 9 a. m. Until 9 p. m.

We are Ready, Men with Spring Styles

That are Crowded with Quality

Style, Quality, Value—It's a fine thing to be enabled to come to this store for men and take these three big essential clothes points for granted—and then proceed leisurely to select your spring suit and overcoat to suit your purse.

Ready Tailored Suits, \$25 to \$60.
Ready Tailored Overcoats, \$20 to \$55.
Special Order Suits, from \$25.

Custom Tailored Suits, from \$50.

GILMOUR'S
68 King Street

HORLICK'S Malted Milk for the Home

A nourishing food-drink for All Ages. Anywhere at anytime. Delicious, sustaining, No cooking.

Spring Millinery Opening at M. R. A. Ltd., Made a Decided Impression Today.

Spring and Summer styles in authentic millinery for all occasions made their initial bow today in the M. R. A. millinery salon—Models from Paris, London, New York and our own Canadian designers, and duplicates of modes favored by leaders of fashion everywhere were in evidence. Among them were seen many charming and becoming hats showing Hindoo or Russian influence—These were soft draped turban affairs, and were developed in the new blue and henna shades, or sometimes in the glossy cellophane.

Hats of broader brim were also among the favored modes. These are particularly smart for the dress-up occasions and show great variety as to flower, and ribbon trimmings.

A Schwabe hat that drew favorable comment was in plain sailor style with top brim and crown made of pearl grey georgette embroidered in color—The underbrim was made of tangerine straw with narrow border of blue—Its only trimming was a wide fringed bow and aash of tangerine, placed artfully on the side.

Francis contributed a smart close fitting poke shaped hat, pointed in front and back, with a wide band of blue and brown blended ribbon, interwoven with gold—Top of crown was of brown tulle. Long streamers of brown, mauve, gold and blue narrow ribbons falling almost to the bottom of skirt gave a very distinguishing touch.

Another noteworthy creation was a small toque with wide band of blue and brown blended ribbon, interwoven with gold—Top of crown was of brown tulle. Long streamers of brown, mauve, gold and blue narrow ribbons falling almost to the bottom of skirt gave a very distinguishing touch.

All these hats and many more equally interesting and attractive will be on display tomorrow too—Every woman in St. John and vicinity is invited to see them.

The finest variety of ladies' voile waists and middie tops for \$1.45 up to 14, 16, 18 Charlotte St. We have no branches.

Forestell Bros. Cash Only

1 gal. Fancy Barbadoes Molasses . . . 88c
1 peck Peas . . . 27c
Potatoes, 1/2 bbl. bag . . . \$1.40
24 lb. Bags Flour . . . 39c
Finest Orange Pekoe Tea, A 1b . . . 39c
5 lb. lots . . . 38c
1 lb. Cocoa . . . 25c
1 lb. Block Shortening . . . 21c
10 lb. Granulated Sugar . . . \$1.10
2 qts. Finest Small White Beans . . . 25c
Clear Fat Pork, 1b . . . 27c
2 pkgs. Corn Flakes . . . 25c
2 pkgs. Corn Starch . . . 25c
2 pkgs. Worcester Sauce . . . 25c
2 pkgs. Jello . . . 25c
3 Rolls Toilet Paper . . . 25c
4 lbs. Barley . . . 25c
1 lb. Granulated Corn Meal . . . 25c
3/4 lb. Western Grey Buckwheat . . . 25c
2 Tins Gold Cross Baked Beans . . . 25c
1 lb. Split Peas . . . 25c
2 Figs Rosebud Tobacco . . . 25c
2 lb. Boneless Codfish . . . 25c
16 oz. Glass Pure Marmalade . . . 25c
16 oz. Glass Pure Jam, all kinds . . . 25c
1 lb. Finest Shelled Walnuts . . . 62c
Little Beauty Brooms . . . 10c
Surprise, Gold, or Sunlight Soap . . . 10c
2 pkgs. Kleenox Washing Powder . . . 25c
2 lb. Tin Corn Syrup . . . 25c
2 lbs. 90 to 100 Prunes . . . 25c
2 Tins Old Dutch . . . 25c
5 lbs. Rolled Oats . . . 25c
3 Tins Sardines . . . 25c
2 lbs. Mixed Starch . . . 25c
2 pkgs. Macaroni . . . 25c
4 lb. Tin Pure Jam . . . 85c
Peas, Corn and Tomatoes; choice brand . . . 18c
1 qt. Yellow Eyed Beans . . . 27c
1 qt. Whole Green Peas . . . 15c
1 lb. Jar Peanut Butter . . . 25c
4 lb. Glass Jar Pure Strawberry Jam . . . \$1.20
4 lb. Tin Pure Strawberry Jam . . . 25c
2 Tins Blueberries . . . 25c
4 lb. Tin Choice Marmalade . . . 90c
Choice Apricots per lb. . . 35c
Choice Peaches, per lb. . . 27c
2 pkgs. Jelly Powder . . . 21c
1 Glass Rosedale Dried Beef . . . 25c
Gal. Can Apples . . . 44c
2 lb. Bites Codfish . . . 19c

Forestell Bros. Cash Only

1 gal. Fancy Barbadoes Molasses . . . 88c
1 peck Peas . . . 27c
Potatoes, 1/2 bbl. bag . . . \$1.40
24 lb. Bags Flour . . . 39c
Finest Orange Pekoe Tea, A 1b . . . 39c
5 lb. lots . . . 38c
1 lb. Cocoa . . . 25c
1 lb. Block Shortening . . . 21c
10 lb. Granulated Sugar . . . \$1.10
2 qts. Finest Small White Beans . . . 25c
Clear Fat Pork, 1b . . . 27c
2 pkgs. Corn Flakes . . . 25c
2 pkgs. Corn Starch . . . 25c
2 pkgs. Worcester Sauce . . . 25c
2 pkgs. Jello . . . 25c
3 Rolls Toilet Paper . . . 25c
4 lbs. Barley . . . 25c
1 lb. Granulated Corn Meal . . . 25c
3/4 lb. Western Grey Buckwheat . . . 25c
2 Tins Gold Cross Baked Beans . . . 25c
1 lb. Split Peas . . . 25c
2 Figs Rosebud Tobacco . . . 25c
2 lb. Boneless Codfish . . . 25c
16 oz. Glass Pure Marmalade . . . 25c
16 oz. Glass Pure Jam, all kinds . . . 25c
1 lb. Finest Shelled Walnuts . . . 62c
Little Beauty Brooms . . . 10c
Surprise, Gold, or Sunlight Soap . . . 10c
2 pkgs. Kleenox Washing Powder . . . 25c
2 lb. Tin Corn Syrup . . . 25c
2 lbs. 90 to 100 Prunes . . . 25c
2 Tins Old Dutch . . . 25c
5 lbs. Rolled Oats . . . 25c
3 Tins Sardines . . . 25c
2 lbs. Mixed Starch . . . 25c
2 pkgs. Macaroni . . . 25c
4 lb. Tin Pure Jam . . . 85c
Peas, Corn and Tomatoes; choice brand . . . 18c
1 qt. Yellow Eyed Beans . . . 27c
1 qt. Whole Green Peas . . . 15c
1 lb. Jar Peanut Butter . . . 25c
4 lb. Glass Jar Pure Strawberry Jam . . . \$1.20
4 lb. Tin Pure Strawberry Jam . . . 25c
2 Tins Blueberries . . . 25c
4 lb. Tin Choice Marmalade . . . 90c
Choice Apricots per lb. . . 35c
Choice Peaches, per lb. . . 27c
2 pkgs. Jelly Powder . . . 21c
1 Glass Rosedale Dried Beef . . . 25c
Gal. Can Apples . . . 44c
2 lb. Bites Codfish . . . 19c

Forestell Bros. Cash Only

1 gal. Fancy Barbadoes Molasses . . . 88c
1 peck Peas . . . 27c
Potatoes, 1/2 bbl. bag . . . \$1.40
24 lb. Bags Flour . . . 39c
Finest Orange Pekoe Tea, A 1b . . . 39c
5 lb. lots . . . 38c
1 lb. Cocoa . . . 25c
1 lb. Block Shortening . . . 21c
10 lb. Granulated Sugar . . . \$1.10
2 qts. Finest Small White Beans . . . 25c
Clear Fat Pork, 1b . . . 27c
2 pkgs. Corn Flakes . . . 25c
2 pkgs. Corn Starch . . . 25c
2 pkgs. Worcester Sauce . . . 25c
2 pkgs. Jello . . . 25c
3 Rolls Toilet Paper . . . 25c
4 lbs. Barley . . . 25c
1 lb. Granulated Corn Meal . . . 25c
3/4 lb. Western Grey Buckwheat . . . 25c
2 Tins Gold Cross Baked Beans . . . 25c
1 lb. Split Peas . . . 25c
2 Figs Rosebud Tobacco . . . 25c
2 lb. Boneless Codfish . . . 25c
16 oz. Glass Pure Marmalade . . . 25c
16 oz. Glass Pure Jam, all kinds . . . 25c
1 lb. Finest Shelled Walnuts . . . 62c
Little Beauty Brooms . . . 10c
Surprise, Gold, or Sunlight Soap . . . 10c
2 pkgs. Kleenox Washing Powder . . . 25c
2 lb. Tin Corn Syrup . . . 25c
2 lbs. 90 to 100 Prunes . . . 25c
2 Tins Old Dutch . . . 25c
5 lbs. Rolled Oats . . . 25c
3 Tins Sardines . . . 25c
2 lbs. Mixed Starch . . . 25c
2 pkgs. Macaroni . . . 25c
4 lb. Tin Pure Jam . . . 85c
Peas, Corn and Tomatoes; choice brand . . . 18c
1 qt. Yellow Eyed Beans . . . 27c
1 qt. Whole Green Peas . . . 15c
1 lb. Jar Peanut Butter . . . 25c
4 lb. Glass Jar Pure Strawberry Jam . . . \$1.20
4 lb. Tin Pure Strawberry Jam . . . 25c
2 Tins Blueberries . . . 25c
4 lb. Tin Choice Marmalade . . . 90c
Choice Apricots per lb. . . 35c
Choice Peaches, per lb. . . 27c
2 pkgs. Jelly Powder . . . 21c
1 Glass Rosedale Dried Beef . . . 25c
Gal. Can Apples . . . 44c
2 lb. Bites Codfish . . . 19c

Forestell Bros. Cash Only

1 gal. Fancy Barbadoes Molasses . . . 88c
1 peck Peas . . . 27c
Potatoes, 1/2 bbl. bag . . . \$1.40
24 lb. Bags Flour . . . 39c
Finest Orange Pekoe Tea, A 1b . . . 39c
5 lb. lots . . . 38c
1 lb. Cocoa . . . 25c
1 lb. Block Shortening . . . 21c
10 lb. Granulated Sugar . . . \$1.10
2 qts. Finest Small White Beans . . . 25c
Clear Fat Pork, 1b . . . 27c
2 pkgs. Corn Flakes . . . 25c
2 pkgs. Corn Starch . . . 25c
2 pkgs. Worcester Sauce . . . 25c
2 pkgs. Jello . . . 25c
3 Rolls Toilet Paper . . . 25c
4 lbs. Barley . . . 25c
1 lb. Granulated Corn Meal . . . 25c
3/4 lb. Western Grey Buckwheat . . . 25c
2 Tins Gold Cross Baked Beans . . . 25c
1 lb. Split Peas . . . 25c
2 Figs Rosebud Tobacco . . . 25c
2 lb. Boneless Codfish . . . 25c
16 oz. Glass Pure Marmalade . . . 25c
16 oz. Glass Pure Jam, all kinds . . . 25c
1 lb. Finest Shelled Walnuts . . . 62c
Little Beauty Brooms . . . 10c
Surprise, Gold, or Sunlight Soap . . . 10c
2 pkgs. Kleenox Washing Powder . . . 25c
2 lb. Tin Corn Syrup . . . 25c
2 lbs. 90 to 100 Prunes . . . 25c
2 Tins Old Dutch . . . 25c
5 lbs. Rolled Oats . . . 25c
3 Tins Sardines . . . 25c
2 lbs. Mixed Starch . . . 25c
2 pkgs. Macaroni . . . 25c
4 lb. Tin Pure Jam . . . 85c
Peas, Corn and Tomatoes; choice brand . . . 18c
1 qt. Yellow Eyed Beans . . . 27c
1 qt. Whole Green Peas . . . 15c
1 lb. Jar Peanut Butter . . . 25c
4 lb. Glass Jar Pure Strawberry Jam . . . \$1.20
4 lb. Tin Pure Strawberry Jam . . . 25c
2 Tins Blueberries . . . 25c
4 lb. Tin Choice Marmalade . . . 90c
Choice Apricots per lb. . . 35c
Choice Peaches, per lb. . . 27c
2 pkgs. Jelly Powder . . . 21c
1 Glass Rosedale Dried Beef . . . 25c
Gal. Can Apples . . . 44c
2 lb. Bites Codfish . . . 19c

Forestell Bros. Cash Only

1 gal. Fancy Barbadoes Molasses . . . 88c
1 peck Peas . . . 27c
Potatoes, 1/2 bbl. bag . . . \$1.40
24 lb. Bags Flour . . . 39c
Finest Orange Pekoe Tea, A 1b . . . 39c
5 lb. lots . . . 38c
1 lb. Cocoa . . . 25c
1 lb. Block Shortening . . . 21c
10 lb. Granulated Sugar . . . \$1.10
2 qts. Finest Small White Beans . . . 25c
Clear Fat Pork, 1b . . . 27c
2 pkgs. Corn Flakes . . . 25c
2 pkgs. Corn Starch . . . 25c
2 pkgs. Worcester Sauce . . . 25c
2 pkgs. Jello . . . 25c
3 Rolls Toilet Paper . . . 25c
4 lbs. Barley . . . 25c
1 lb. Granulated Corn Meal . . . 25c
3/4 lb. Western Grey Buckwheat . . . 25c
2 Tins Gold Cross Baked Beans . . . 25c
1 lb. Split Peas . . . 25c
2 Figs Rosebud Tobacco . . . 25c
2 lb. Boneless Codfish . . . 25c
16 oz. Glass Pure Marmalade . . . 25c
16 oz. Glass Pure Jam, all kinds . . . 25c
1 lb. Finest Shelled Walnuts . . . 62c
Little Beauty Brooms . . . 10c
Surprise, Gold, or Sunlight Soap . . . 10c
2 pkgs. Kleenox Washing Powder . . . 25c
2 lb. Tin Corn Syrup . . . 25c
2 lbs. 90 to 100 Prunes . . . 25c
2 Tins Old Dutch . . . 25c
5 lbs. Rolled Oats . . . 25c
3 Tins Sardines . . . 25c
2 lbs. Mixed Starch . . . 25c
2 pkgs. Macaroni . . . 25c
4 lb. Tin Pure Jam . . . 85c
Peas, Corn and Tomatoes; choice brand . . . 18c
1 qt. Yellow Eyed Beans . . . 27c
1 qt. Whole Green Peas . . . 15c
1 lb. Jar Peanut Butter . . . 25c
4 lb. Glass Jar Pure Strawberry Jam . . . \$1.20
4 lb. Tin Pure Strawberry Jam . . . 25c
2 Tins Blueberries . . . 25c
4 lb. Tin Choice Marmalade . . . 90c
Choice Apricots per lb. . . 35c
Choice Peaches, per lb. . . 27c
2 pkgs. Jelly Powder . . . 21c
1 Glass Rosedale Dried Beef . . . 25c
Gal. Can Apples . . . 44c
2 lb. Bites Codfish . . . 19c

Forestell Bros. Cash Only

1 gal. Fancy Barbadoes Molasses . . . 88c
1 peck Peas . . . 27c
Potatoes, 1/2 bbl. bag . . . \$1.40
24 lb. Bags Flour . . . 39c
Finest Orange Pekoe Tea, A 1b . . . 39c
5 lb. lots . . . 38c
1 lb. Cocoa . . . 25c
1 lb. Block Shortening . . . 21c
10 lb. Granulated Sugar . . . \$1.10
2 qts. Finest Small White Beans . . . 25c
Clear Fat Pork, 1b . . . 27c
2 pkgs. Corn Flakes . . . 25c
2 pkgs. Corn Starch . . . 25c
2 pkgs. Worcester Sauce . . . 25c
2 pkgs. Jello . . . 25c
3 Rolls Toilet Paper . . . 25c
4 lbs. Barley . . . 25c
1 lb. Granulated Corn Meal . . . 25c
3/4 lb. Western Grey Buckwheat . . . 25c
2 Tins Gold Cross Baked Beans . . . 25c
1 lb. Split Peas . . . 25c
2 Figs Rosebud Tobacco . . . 25c
2 lb. Boneless Codfish . . . 25c
16 oz. Glass Pure Marmalade . . . 25c
16 oz. Glass Pure Jam, all kinds . . . 25c
1 lb. Finest Shelled Walnuts . . . 62c
Little Beauty Brooms . . . 10c
Surprise, Gold, or Sunlight Soap . . . 10c
2 pkgs. Kleenox Washing Powder . . . 25c
2 lb. Tin Corn Syrup . . . 25c
2 lbs. 90 to 100 Prunes . . . 25c
2 Tins Old Dutch . . . 25c
5 lbs. Rolled Oats . . . 25c
3 Tins Sardines . . . 25c
2 lbs. Mixed Starch . . . 25c
2 pkgs. Macaroni . . . 25c
4 lb. Tin Pure Jam . . . 85c
Peas, Corn and Tomatoes; choice brand . . . 18c
1 qt. Yellow Eyed Beans . . . 27c
1 qt. Whole Green Peas . . . 15c
1 lb. Jar Peanut Butter . . . 25c
4 lb. Glass Jar Pure Strawberry Jam . . . \$1.20
4 lb. Tin Pure Strawberry Jam . . . 25c
2 Tins Blueberries . . . 25c
4 lb. Tin Choice Marmalade . . . 90c
Choice Apricots per lb. . . 35c
Choice Peaches, per lb. . . 27c
2 pkgs. Jelly Powder . . . 21c
1 Glass Rosedale Dried Beef . . . 25c
Gal. Can Apples . . . 44c
2 lb. Bites Codfish . . . 19c

Derwillo

The Beauty Doctor

\$1.00 Bottle

Sent prepaid anywhere upon receipt of price

WASSONS 2 STORES

Uptown, 19 Sydney Street. North End, 711 Main Street.



Your Mirror Will Tell You

WASSONS 2 STORES

AT CARLETON'S MILL REMNANTS OF DRESS GINGHAMS.
2 lb. Cotton Batting, 6x7 feet . . . \$1.00 each
40 and 42 inch Circular Pillow Cotton . . . 40c. yard
245 WATERLOO STREET

Smoke T&B

For over sixty years a favorite

BIG SPECIALS AT

Robertson's

98 lb. bag Cream of West or Five Roses Flour . . . \$5.90
Fancy Barbadoes Molasses, a gallon . . . 85c
Take it with you at 80c a gal.
10 lb. tin Domestic Shortening . . . \$1.65
Small Picnic Ham at . . . 27c lb
Fancy Seeded Raisins, 15 oz. pkg. . . 28c
Fancy Cleaned Currants, 15 oz. pkg. . . 24c
Finest Shelled Walnuts . . . 60c lb
Lea & Perrin's Sauce . . . 39c bot.
1 lb. tin Best Pink Salmon . . . 21c
3 cakes Gold or Sunlight Soap . . . 27c
California Fruit, all kinds, 3 tins for . . . 95c

Robertson's

Cor. Waterloo and Golding St. Phones M. 3457, M. 3458

11-15 Douglas Ave. Phones M. 3461, M. 3462

Baked Beans

Clarke's Beans, Plain or With Sauce, at Special Price to Clear.

We have still a large stock on hand and in order to dispose of it before March 26th, we have decided to mark down prices away below cost. We solicit a visit to our store, and we guarantee to make it worth while.

M. & H. Gallagher & Co.

34 Charlotte St.

Finest Delaware Potatoes . . . 27c pk.
10 lb. half bbl. bags . . . \$1.40
2 pkgs. Corn Starch . . . 25c
2 lbs. Laundry Starch . . . 25c
4 rolls Toilet Paper . . . 25c
2 regular 15c boxes Matches . . . 25c
2 pkgs. Macaroni . . . 25c
1 lb. tin Pure Strawberry Jam . . . \$1.15
2 qts. best White Beans . . . 25c
Best Clear Fat Pork . . . 27c
5 lbs. Rolled Oats . . . 25c
3 cakes Laundry Soap . . . 25c
Fancy Lemons . . . 35c doz.
Sweet Seedless Oranges . . . 27c doz.
Best Pure Lard . . . 25c lb.
1 lb. block Best Shortening . . . 19c
Good Brooms . . . 55c
3 lb. tin Shortening . . . 54c

M. A. MALONE

116 Main Street. Phone M. 2913

Foamy, Fritter, Fondants

Fresh from Factory every Friday

ALLAN'S PHARMACY

172 King Street, West St. John, N. B. OPTICAL SERVICE

Brown's Grocery Company

86 Brussels St. Phone 2666

Cor. King and Ludlow Streets Phone West 166

White Potatoes, a peck . . . 25c
80 lb. bags . . . \$1.40
2 cans Pumpkin . . . 25c
2 lb. New Prunes . . . 25c
Oatmeal, per pkg. (Ogilvie's) . . . 29c
Fresh Eggs, per dozen . . . 60c
2 cans Old Dutch . . . 25c
2 qts. White Beans . . . 25c
4 lb. tins Pure Marmalade . . . 98c
2 tumbled Jam . . . 35c
24 lb. bag Flour, all kinds . . . \$4.40
38 lb. bag Flour, all kinds . . . \$4.25
3/4 lb. Oatmeal . . . 25c
2 Lipton's Jelly . . . 25c
2 pkgs. Pure Gold Tapioca . . . 25c
Fine Orange Pekoe Tea, a lb. . . 40c
Goods delivered all over City, Carleton and Fairville.

The 2 Barkers, Ltd

100 Princess St. Phone M. 642

65 Brussels St. Phone M. 1630

10 lbs. Finest Granulated Sugar . . . \$1.05
100 lb. bag Finest Gran. Sugar . . . \$10.45
1 gal. Best Fancy Molasses . . . 80c
Best White Potatoes, a peck, only . . . 25c
Best Print Dairy Butter, a lb. . . 55c
Strictly Fresh Eggs, a dozen . . . 49c
Shelled Walnuts, a lb., only . . . 69c
4 lb. tin Pure Orange Marmalade . . . 98c
4 lb. tin Pure Fruit Jam . . . 79c
4 lb. tin Pure Strawberry or Raspberry Jam . . . \$1.04
16 oz. Pure Orange Marmalade . . . 30c
16 oz. jar Pure Plum Jam . . . 27c
16 oz. jar Pure Strawberry Jam . . . 36c
Finest Orange Pekoe Tea, per lb. . . 38c
Fresh Ground Coffee, a lb. . . 45c to 60c

LARD AND SHORTENING.

1 lb. block Pure Lard . . . 24c
3 lb. tin Pure Lard . . . 70c
5 lb. tin Pure Lard . . . \$1.20
20 lb. pail Pure Lard . . . \$4.45
1 lb. block Best Shortening . . . 18c
3 lb. tin Best Shortening . . . 53c
5 lb. tin Best Shortening . . . 90c
20 lb. tin Best Shortening . . . \$3.25
1 lb. block Swift's Margarine . . . 35c
1 lb. Best Clear Fat Pork . . . 25c
Choice Small Picnic Ham . . . 27c
Choice Roll Sliced Bacon . . . 39c
Best Boneless Codfish, a lb. . . 19c
Best Whole Codfish, a lb. . . 12c

FLOUR AND CEREALS.

24 lb. bag Best Pastry Flour . . . \$1.45
24 lb. bag Royal Household Flour . . . \$1.53
24 lb. bag Best Pastry Flour . . . \$1.45
24 lb. bag Royal Household Flour . . . \$1.53
20 lb. bag Best Polled Oats . . . \$4.25
20 lb. bag Best Rolled Oats . . . 99c
5 lbs. Best Rolled Oats . . . 25c

MISCELLANEOUS.

Best Peanut Butter, a lb. . . 30c
Best Bulk Cocoa, a lb. . . 2