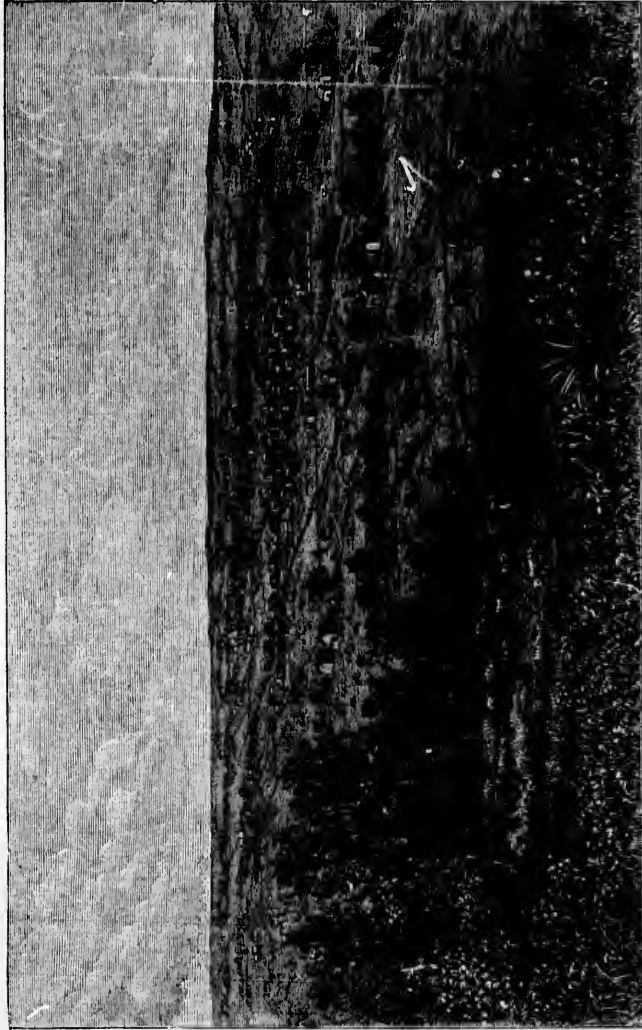


Silver Islet, the richest silver mine in the world, may be mentioned. I understand it is the intention of the Canadian Pacific Railway to place

this is done it will not only be the quickest but the cheapest route for emigrants to take when going to the Canadian North-west, that is, by



QU'APPELLE VALLEY.

several fine steamers on the upper part of Lake Superior between Algoma and Thunder Bay, a distance of some three hundred miles. When

the Canadian Pacific to Algoma, thence by steamer to Prince Arthur's Landing, and from thence by rail in a direct line to Winnipeg.

A
seve
whe
food
well
to
num
larg
ther
day

will
com

ARRI

H
ing
med
inter
for
form
boun