

He was not in favor of using lime or other stone direct from the crusher, when such stone in the process of crushing produced a large volume of dust, which said dust should be removed by screening. When, however, the process of crushing produced a broken stone graded from two inches down to a coarse sand, in his opinion it was perfectly safe to use it without screening. Field or boulder stone, granite and other hard stone, he considered as preferable for crushing purposes. Engineers differ greatly in opinion as to the quantity of water to be used in concrete mixtures,

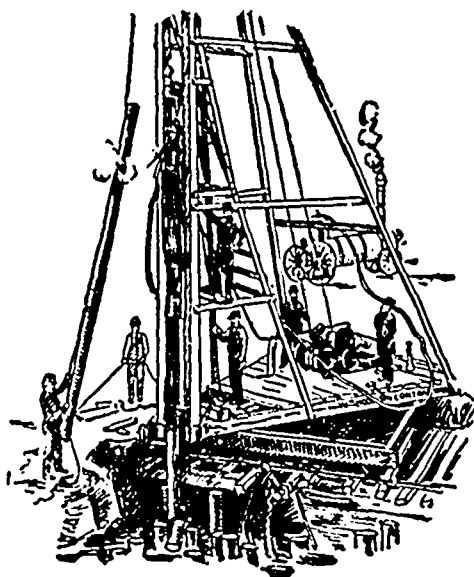
but his experience led him to believe that sufficient water to make the mixture of the consistency or damp loam of raw sugar, before being placed in position or tamped, was good practise."

The whole of the ninth paragraph should be eliminated and the following substituted, viz:

"Mr. Duck said that there was no reason, as some supposed, why concrete would not set in water, proper precautions being, of course, taken in depositing the concrete in place. Tests of certain piers in the Ottawa River, from about one foot

above high water mark to the footings, a distance of some fifty feet, had demonstrated that the concrete, all of which had been deposited in water, had set perfectly and was in excellent condition."

In the report which appeared in the last issue of this paper of the discussion on "Concrete" at the Toronto Engineer's Club, the name of Mr. J. T. Culverwell was erroneously mentioned instead of Mr. J. Alexander Culverwell as having participated in the discussion.



PILE DRIVING

on land or water by Steam Pile Drivers or Drop Hammers.

**Portable Boilers
Hoisting Engines
Pumping Machinery**

TO LET

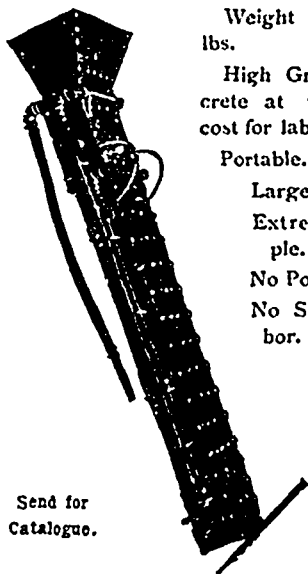
Bridge Building, Trestle Work, Wharves, Dams, Diving Submarine Work and General Contracting.

WM. HOOD & SON
10 Richmond Sq. - MONTREAL

The Best is the Cheapest.

The . .

PORTABLE GRAVITY CONCRETE MIXER



Weight about 500 lbs.

High Grade Concrete at very low cost for labor.

Portable.

Large Capacity.
Extremely Simple.

No Power used.
No Skilled Labor.

Continuous in action.

Send for Catalogue.

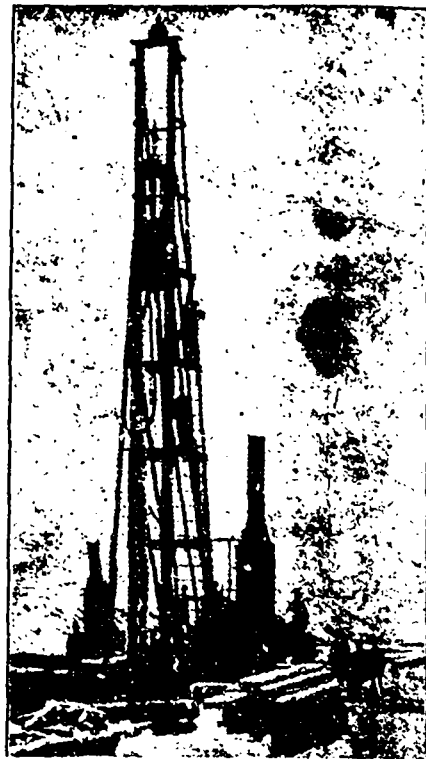
**E. F. Dartnell,
Montreal.**

Please mention the **CONTRACT RECORD** when corresponding with advertisers.

PILE DRIVING

and Foundation Work.

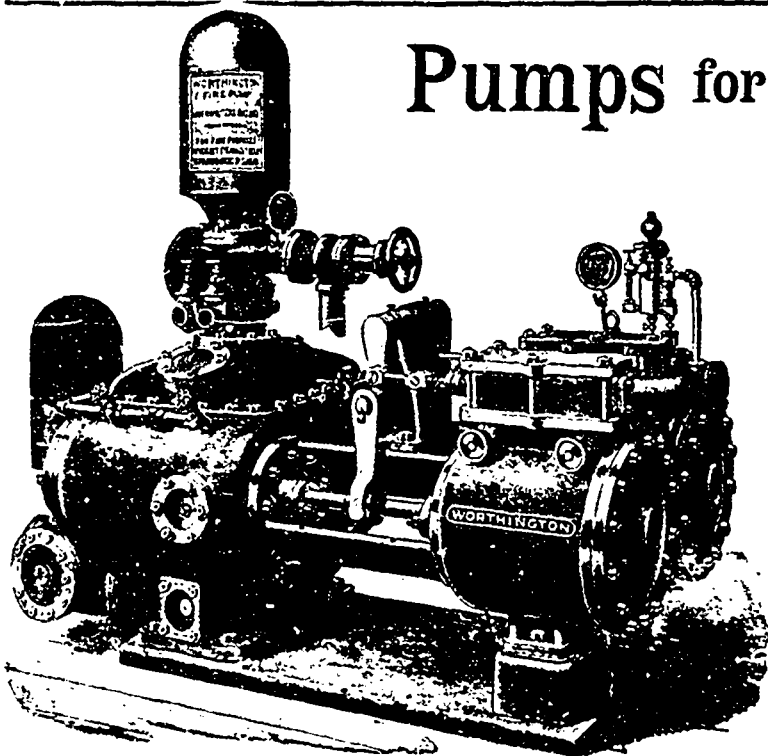
By 5-ton Steam Hammer, Water Jet or Drop Hammers, Dock Building, Submarine Work and Dredging.



BUILDING MOVER AND WRECKER

General Contracting.

JNO. E. RUSSELL, - Toronto.
908 Queen St E - Phone M. 2007.



Pumps for Waterworks

**Waterworks Systems
Installed**

*Steam, Hydraulic, Electric,
Gasoline, Air Lift and
Automatic Rams.*

**Steam Boilers and
Filters**

Write for Prices and Particulars

The John McDougall

CALEDONIAN IRON WORKS CO., LIMITED

MONTREAL, P.Q.