



FIG. 9.—No. 3269—MISSES' SUIT. PRICE 25 CENTS.

Quantity of Material (27 inches wide) for

27 inches, 6 yards; 28 inches, 6 1/4 yards; 29 inches, 6 3/4 yards; 30 inches, 7 yards; 31 inches, 7 1/4 yards; 32 inches, 7 1/2 yards.

Quantity of Material (24 inches wide) for

27 inches, 5 1/2 yards; 28 inches, 5 3/4 yards; 29 inches, 6 yards; 30 inches, 6 1/4 yards; 31 inches, 6 3/4 yards; 32 inches, 6 1/2 yards.

Lining for underskirt (desks 27 inches wide), 8 1/2 yards.



FIG. 12.—No. 2254.—MISSES' BATHING SUIT. PRICE 20 CENTS.

Quantity of Material (25 inches wide) for

27 inches, 3 1/4 yards; 28 inches, 3 3/8 yards; 29 inches, 3 1/2 yards; 30 inches, 3 5/8 yards; 31 inches, 3 3/4 yards; 32 inches, 3 7/8 yards.



FIG. 2.—No. 5260.—LADIES' BATHING SUIT. PRICE 25 CENTS.

Quantity of Material (27 inches wide) for

30 inches, 6 1/4 yards; 32 inches, 7 yards; 34 inches, 7 yards; 36 inches, 7 1/8 yards; 38 inches, 7 1/8 yards; 40 inches, 7 1/2 yards; 42 inches, 7 1/4 yards.

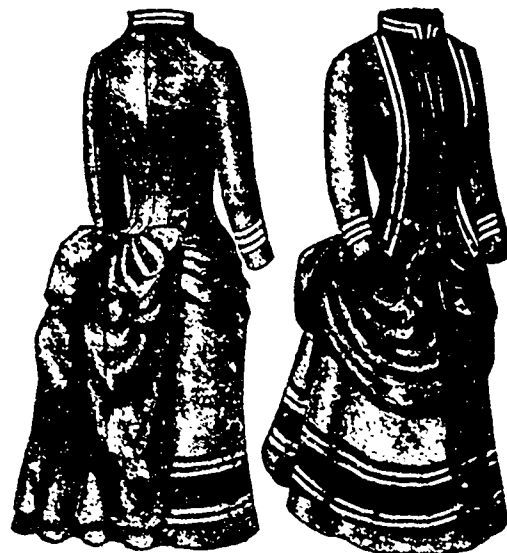


FIG. 11. No. 3260—MISSES' SUIT. PRICE, 25 CENTS.

Quantity of Material (27 inches wide) for

27 inches, 6 1/4 yards; 28 inches, 7 1/8 yards; 29 inches, 7 3/8 yards; 30 inches, 7 7/8 yards; 31 inches, 8 1/2 yards; 32 inches, 8 3/8 yards.

Quantity of Material (24 inches wide) for

27 inches, 5 3/8 yards; 28 inches, 6 3/4 yards; 29 inches, 6 1/2 yards; 30 inches, 6 7/8 yards; 31 inches, 7 1/8 yards; 32 inches, 6 3/4 yards.



FIG. 10.—No. 3270 MISSES' SUIT.—PRICE, 25 CENTS.

Quantity of Material (24 inches wide) for

27 inches, 7 7/8 yards; 28 inches, 8 yards; 29 inches, 8 1/4 yards; 30 inches, 8 3/8 yards; 31 inches, 8 5/8 yards; 32 inches, 8 3/4 yards.

Quantity of Material (22 inches wide) for

27 inches, 5 yards; 28 inches, 5 yards; 29 inches, 5 3/4 yards; 30 inches, 5 3/8 yards; 31 inches, 5 5/8 yards; 32 inches, 6 3/4 yards.

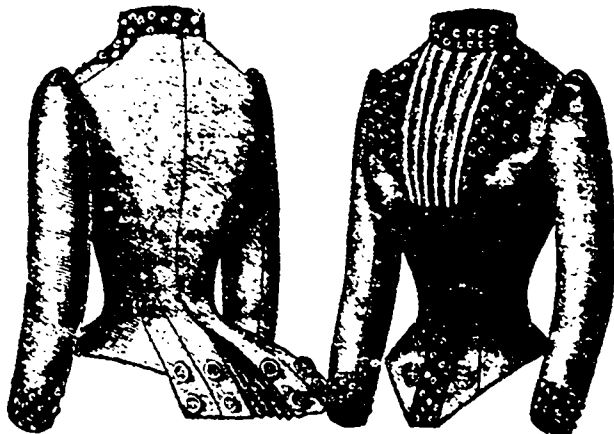


FIG. 3.—No. 3263.—LADIES' BLOUSE. PRICE 25 CENTS.

Quantity of Material (25 inches wide) for

30 inches, 3 1/4 yards; 32 inches, 3 3/8 yards; 34 inches, 3 1/2 yards; 36 inches, 3 5/8 yards; 38 inches, 3 3/4 yards; 40 inches, 3 7/8 yards; 42 inches, 3 3/4 yards; 44 inches, 3 5/8 yards; 46 inches, 3 3/4 yards.

Quantity of Material (22 inches wide) for

30 inches, 1 7/8 yards; 32 inches, 1 7/8 yards; 34 inches, 1 7/8 yards; 36 inches, 2 yards; 38 inches, 2 1/8 yards; 40 inches, 2 1/4 yards; 42 inches, 2 1/4 yards; 44 inches, 2 3/8 yards; 46 inches, 2 3/8 yards.

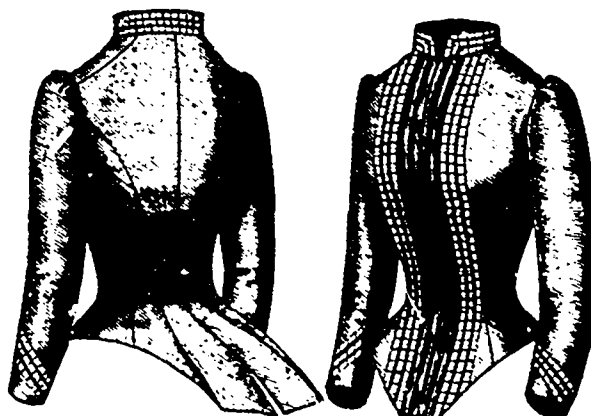


FIG. 4.—No. 3262.—LADIES' BLOUSE. PRICE 25 CENTS.

Quantity of Material (24 inches wide) for

30 inches, 3 yards; 32 inches, 3 yards; 34 inches, 3 1/8 yards; 36 inches, 3 1/4 yards; 38 inches, 3 1/2 yards; 40 inches, 3 3/4 yards; 42 inches, 3 7/8 yards; 44 inches, 4 yards; 46 inches, 4 yards.

Quantity of Material (22 inches wide) for

30 inches, 1 5/8 yards; 32 inches, 1 3/4 yards; 34 inches, 1 7/8 yards; 36 inches, 1 7/8 yards; 38 inches, 2 yards; 40 inches, 2 1/8 yards; 42 inches, 2 1/8 yards; 44 inches, 2 1/4 yards; 46 inches, 2 1/4 yards.