

A. B. C. & A. I Codes Used.

Telegraphic Address, Latch, Haymills

LATCH & BATCHELOR, L't'd.

AMALGAMATED WITH
WEBSTER & HORSFALL,

(ESTABLISHED 1730.)

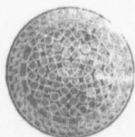
Works : HAYMILLS, BIRMINGHAM, ENGLAND.

AGENT: H. M. WYLDE, P O Box, 529 HALIFAX N. S.

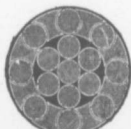
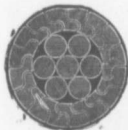
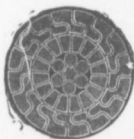
Patentees and Manufacturers of

Locked Coil and Flattened Strand WIRE ROPES.

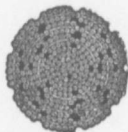
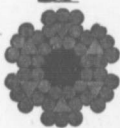
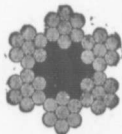
Manufacturers of all Kinds of WIRE ROPES for
Mines, Tramways, Aerial Ropeways, Suspension
Bridges, Cranes, Elevators, Transmission of
Power, Steam Ploughing and General
Engineering Purposes.



Locked Coil Winding Cable.



Locked Coil Aerial Cable or Collery Guide.



Lang's Lay or ordinary Patent Flattened Strand Winding or Hauling. Patent Flattened Strand, (non spinning)

DRAWERS OF all Sections
HIGH CLASS STEEL-WIRE.
for Ropes, Springs, Pianos, Needles, Fish-Hooks
Binding Armatures and all other Purposes.