

HENRY SMITH,

53 Bay St., Toronto.

—WHOLESALE DEALER IN—

Fancy Goods and Woodenware

Importer of all the latest European and American Novelties.

Represented by R. G. MOGGRIDGE who is now showing a full line of

DRUGGIST, TOBACCONIST,

and STATIONERS' SUNDRIES,

PLUSH, LEATHER AND OAK DRESSING CASES AND BOXES,

PURSES, SILVERWARE

Electroplate and Cutlery,

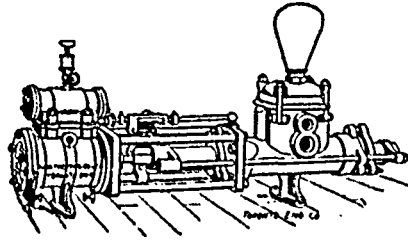
CHINA GOODS,

Cups and Saucers, Toys, Games, Dolls, Sleighs and a full line of New Goods.

SAMPLES—

At Manitoba Hotel, Winnipeg, from July 3rd to 22nd.

HENRY SMITH, 53 Bay Street, TORONTO.



Outside Plunger Boiler Feed Pump.

STEAM PUMPS

—FOR—

ALL PURPOSES.

Northey Mfg. Co., Ltd.

TORONTO, ONTARIO.

DICK, BANNING & CO

MANUFACTURERS OF

Lumber, Shingles and Lath,

DOORS AND SASH.

MILLS AT KEWATIN. OFFICE: OPPOSITE C.P.R. PASSENGER DEPOT, WINNIPEG

To Chicago and the World's Fair.

"The Northwestern Line" now offers the following improved train service from Minneapolis and St. Paul.

"The Badger State Express" leaves Minneapolis every morning 7:30, St. Paul, 8 o'clock, and arrives Chicago 9:35 P. M. This train is equipped with modern day coaches and luxurious parlor cars. By this train the traveler is enabled to see the beautiful scenery of Wisconsin with its hills, rivers and lakes, giving most delightful daylight ride through a most picturesque and interesting region.

"The World's Fair Express" leaves Minneapolis every evening, except Sunday, 5:45, St. Paul, 6:20 o'clock, and arrives Chicago, 7:45 next morning. This train is equipped with vestibuled, Gas Lighted Buffet Sleepers and Free Chair Cars; a direct use of the early arrival in Chicago is best train for World's Fair.

"The Northwestern Limited" leaves Minneapolis every night in the year, 7:30, St. Paul, 8:10 o'clock, and arrives Chicago 9:30 next morning. This is the only train west of Chicago equipped with Pullman and Wagner Private Compartment Sleeping Cars and Buffet Smoking Library Coaches, and is only train of its kind in America on which extra fare is not charged.

World's Fair Excursion Tickets now on sale, via "The Northwestern Line."

T. W. TEASDALE,
General Passenger Agent, St. Paul.

COMMERCIAL JOB DEPT.,
Awarded First Prize for Job Printing
Winnipeg Industrial '91 and '92.

Are You :-

Looking for Land?

Take a trip over the Great Northern Railway through Northern Minnesota and North Dakota, and you can satisfy your yearnings. The Red River Valley, the Devil's Lake district and the Turtle Mountain country invites investigation and settlement. These localities offer free homesteads, cheap lands and good climate to Eastern farmers who have vainly toiled for years to get ahead and pay off "that little mortgage." It is the country too, for the grown-up sons to whose sturdy labor the small Eastern farm no longer gives adequate returns. Apply or write to J. A. Donaldson, Winnipeg, Manitoba, for information.

In Poor Health?

The Northwest is one vast sanitarium. The bright sunshine, the absence of fogs and chilly weather, the bracing air, put vigor into the steps of men and paint roses on the cheeks of women, with colors not to be found in the drug stores. There are hot springs, too, along the Great Northern in the West, noted for healing many human ailments.

A Manufacturer?

If you are crowded where you are now, or if raw material is getting scarce, take a look at the Northwest. It is full of resources, of wood, clay, minerals, and products of various sorts. There are undeveloped water powers. You can find material and power in close association. The railway affords cheap facilities to market.

An Eastern Renter?

The renter expends his energies for another. To occupy and begin the cultivation of a homestead means the creation at once of a property worth a thousand dollars or more, and every year thereafter the equivalent of a laboring man's wages back East will be added to the value of the farm.

Looking for Gold, Silver or Copper?

Rich discoveries are being made every day in the Kootenay district of British Columbia, Montana, and Idaho, in the Neilhart-Barker district of Montana, and in the Okanogan district of Washington. To reach these localities take the Great Northern Railway. The district route to Fort Steele, B. C., is by steamer from Jennings, Mont., and to Pilot Bay, Kaslo, Alnsworth and Nelson, B. C., by steamer from Bonner's Ferry, Idaho, in connection with Great Northern Railway trains.

Looking for a Business Location?

A region as extensive and as prolific in resources and as full of growing towns and cities as that covered by the Great Northern Railway offers unusual openings for business men. Still chances to get in on the ground floor.

Do You Wish to Engage in Lumbering?

The finest forests of hard and soft wood to be found in America exist along and in territory tributary to the Great Northern Railway in Minnesota, Montana, Idaho and Washington.

Do You Like Stock Raising?

The best of opportunities await you in the Northwest. The finest horses, cattle and sheep in America roam over the pasture lands of Minnesota, the Dakotas and Montana.

Do You Want a Home?

You can find one in the Northwest. It is a large country from the Mississippi river to Puget Sound. There is variety for every taste and wish. Write to

J. A. DONALDSON,

General Agent, Winnipeg, Man.

Or F. J. WHITNEY,
Gen. Pass. & Ticket Agent, St. Paul, Minn.

STAMINAL

supplies the feeding qualities of

Beef and Wheat

and the tonic qualities of

Hypophosphites

combined in the form of a

PALATABLE BEEF TEA.

A Valuable Food and Tonic.

Milk Granules,

THE IDEAL FOOD FOR INFANTS.

It contains nothing that is not naturally present in pure cow's milk.

It is absolutely free from Starch, Glucose and Cane Sugar, and when dissolved in the requisite quantity of water it yields a product that is

THE PERFECT

EQUIVALENT OF MOTHER'S MILK.

Johnston's Fluid Beef

is the product of

OX BEEF OF PRIME QUALITY.

It supplies the life principles of Beef in a form easy of digestion.

The Great Strength-Giver.

Calceined



Plaster.

—MANUFACTURED

By—

ALBERT MANUFACTURING CO.,

HILLSBOROUGH, NEW BRUNSWICK,