

ALLIS-CHALMERS CO.

SUCCESSOR TO

THE EDWARD P. ALLIS CO.,
MILWAUKEE, WIS.

FRASER & CHALMERS,
CHICAGO, ILL.

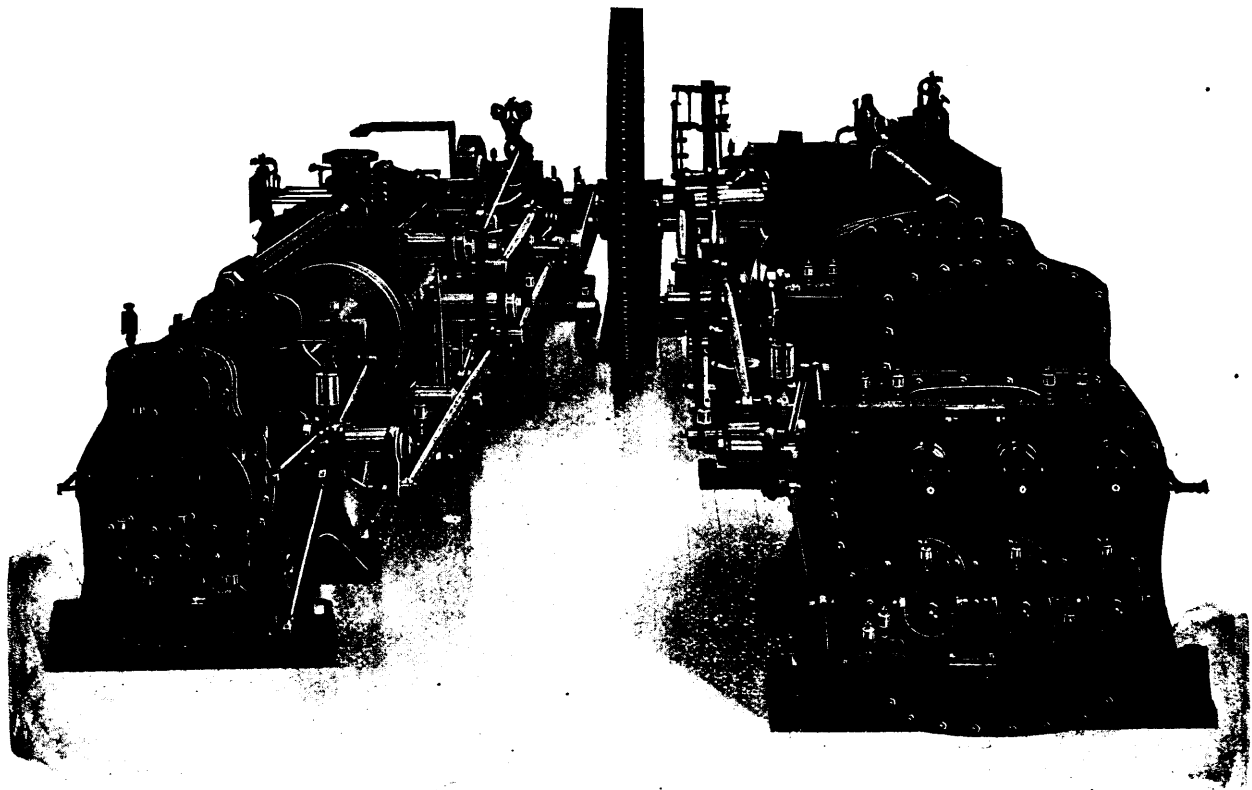
GATES IRON WORKS,
CHICAGO, ILL.

DICKSON M'FG CO.,
SCRANTON, PA.

BUILDERS OF

AIR COMPRESSORS

We build high-grade air compressors for all purposes, and compressors of special design to meet the requirements of mining service. Our compressors are built in two styles, with Riedler mechanically controlled valves, and also with Reynolds automatic valves.



TWO STAGE RIEDLER AIR COMPRESSOR

The above cut illustrates a compressor built for the Anaconda Copper Mining Company, Montana, and the Broken Hill Proprietary Co., Australia, capacity about 7,100 cubic feet free air per minute.

We make a specialty of compressors arranged to be driven either by steam or electricity. We also build three and four stage compressors for unusually high delivery pressure.

We are the largest builders in the world of blowing engines for metallurgical purposes, and there are in constant operation to-day more than 200 large blowing engines of our manufacture.

BRANCH OFFICES:

NEW YORK, Empire Bldg.
BOSTON, Board of Trade Bldg.
PITTSBURG, Frick Building
MINNEAPOLIS, Corn Exchange Bldg.
DENVER, 1649 Tremont Street
SALT LAKE CITY, 209 S.W. Temple St.
SPOKANE, Washington

GENERAL

CHICAGO,

LONDON, ENG., 533 Salisbury House



OFFICE

ILL., U.S.A.

JOHANNESBURG, South Africa

BRANCH OFFICES:

SAN FRANCISCO, Hayward Bldg.
SEATTLE, Lumber Exchange Bldg.
CHARLOTTE, N. C., Trust Bldg.
NEW ORLEANS, Hennes Bldg.
ATLANTA, GA., Equitable Bldg.
BUTTE, MONT., 51 E. Broadway