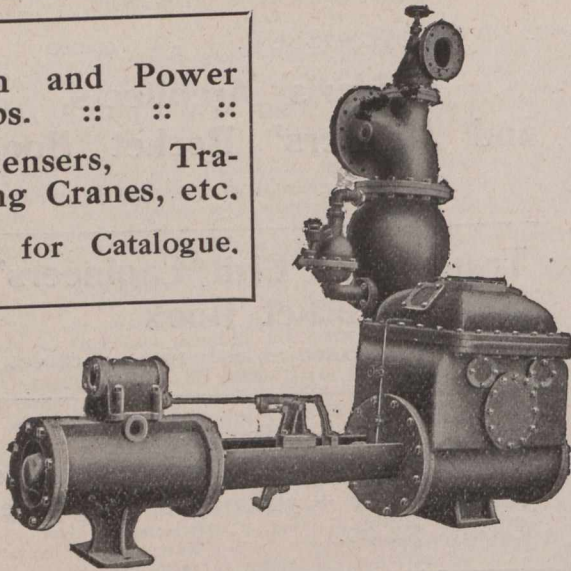


Steam and Power
Pumps. :: ::

Condensers, Tra-
velling Cranes, etc.

Write for Catalogue.



The Smart-Turner Machine Co., Ltd.
HAMILTON - - CANADA

Business very active; price, 73 per cent. off list at factory for car-load lots; 60 per cent. off list retail.

Steel Beams and Channels.—Active.—We quote:—\$2.75 per 100 lbs., according to size and quantity; if cut, \$3 per 100 lbs.; angles, 1 1/4 by 3-16 and larger, \$2.50; tees, \$2.80 to \$3 per 100 pounds. Extra for smaller sizes of angles and tees.

Sheet Steel.—American Bessemer, 10-gauge, \$2.50; 12-gauge, \$2.55; 14-gauge, \$2.35; 17, 18, and 20-gauge, \$2.45; 22 and 24-gauge, \$2.55; 26-gauge, \$2.65; 28-gauge, \$2.80. A very active movement is reported at unchanged prices.

Sheets Galvanized.—Apollo Brand.—Sheets 6 or 8 feet long, 30 or 36 inches wide; 10-gauge, \$3.00; 12-14-gauge, \$3.00; 16, 18, 20, \$3.20; 22-24, \$3.35; 26, \$3.50; 28, \$3.95; 29, \$4.25; 10 1/4, \$4.25 per 100 lbs. Fleur de Lis—28-gauge, \$4.10; 26, \$3.80 per 100 lbs.

Tank Plate.—3-16-inch, \$2.40 per 100 lbs.

Tool Steel.—Jowett's special pink label, 10 1/2 c. Cammel-Laird, 16c "H.R.D." high speed tool steel, 65c.

Tin.—Market irregular, with considerable business passing. We quote 34 1/2 to 35c.

Wheelbarrows.—Navy, steel wheel, Jewel pattern, knocked down, \$21.60 per dozen; set up, \$22.60. Pan Canadian, navy, steel tray, steel wheel, \$3.30 each; Pan American, steel tray, steel wheel, \$4.25 each.

Zinc Spelter.—The market can no longer be described as lively; a steady but limited movement goes on at \$5.50 to \$5.75 per 100 lbs.

CAMP SUPPLIES.

Butter.—Dairy products, 20 to 21c.; creamery prints, 24 to 25c.; the creamery output is now considerable.

Canned Goods.—Peas, \$1.15 to \$1.75; tomatoes, 35, 90 to 95c.; pumpkins, 35, 95c.; corn, 85c.; peaches, 25, white, \$1.50 to \$1.60; yellow, \$1.80 to \$1.85; strawberries, 25, heavy syrup, \$1.50 to \$1.85; raspberries, 25, \$1.75 to \$1.95.

Cheese.—Moderately firm; old cheese, large, 13 1/2 c.; twins, 13 1/4 c.; new, 12 1/2 c.

Coffee.—Rio, green, 11 to 12 1/2 c.; Mocha, 21 to 23c.; Java, 20 to 31c.; Santos, 11 to 15c.

Dried Fruits.—Raisins, generally higher, Valencia, 7c.; seeded, 1-lb. packets, fancy, 8c.; 16-oz. packets, choice, 7 1/2 c.; Sultanas, good, 7c.; fine, 8c.; choice, 8 1/2 c.; fancy, 9c.; Filiatras currants, cleaned, 6 1/2 to 7c.; Vosizzas, 8 1/2 to 9c.; uncleaned currants, 6 1/2 to 6 3/4 c.

Flour.—Keeps higher; quotations at Toronto are: Manitoba flour, first patents, \$6.20; second patents, \$5.90, strong bakers', \$5.50; Ontario flour, winter wheat patents, \$4.20 to \$4.30 per barrel.

Lard.—Tierces, 15c.; tubs, 15c.; pails, 15 1/2 c.

Molasses.—Barbadoes barrels, 17 to 18c.; West Indian, 27 to 30c.; New Orleans, 30 to 32c. for medium.

Pork.—Not much doing, short cut, \$31 to \$31.50 per barrel; mess, heavy, \$28 to \$28.50.

Rice.—B grade, 3 1/2 c. per lb. Davao.

Salmon.—Fraser River, talls, \$2; flats, \$2; River Inlet, \$1.85; cohoes, \$1.60.

Smoked and Dry Salt Meats.—Long clear bacon, 15 to 15 1/2 c. per lb., tons and cases; hams, large, 17 to 17 1/2 c.; small, 18 1/2 to 19c.; rolls, 18 to 18 1/2 c.; breakfast bacon, 10 to 20c.; backs (plain), 20 to 21c.; backs (peameal), 20 to 21c.; shoulder hams, 14c.; green meats out of pickle, 1c. less than smoked.

Spices.—Allspice, 18 to 19c.; nutmegs, 30 to 75c.; cream tartar, 22 to 25c.; compound, 15 to 20c.; pepper, black, pure Singapore, 14 to 17c.; pepper, white, 20 to 30c.

Sugar.—Granulated, \$5.20 per 100 lbs., in barrels; Acadia, \$5.10; yellow, \$4.80; bags.

Syrup.—Corn syrup, special bright, 35 1/2 c. per lb.

Teas.—Japans, 20 to 30c. per lb.; Young Hysons, 16 to 18c.; Ceylons,

Vegetables.—Potatoes—Ontario, new, per barrel, \$2.50 to \$2.60; onions by the crate, Spanish, \$3.

Bar Steel

IRON FINISH SMOOTH FINISH
R E E L E D

At low prices for satisfactory qualities

A. C. LESLIE & CO., Limited

MONTREAL

Winnipeg, August 16th, 1910.

Conditions on the local market remain unchanged, and the demand continues fairly strong. There is a reported reduction in the price of common lumber of \$2 a thousand, following a conference at Banff of the coast mill men and the prairie retailers. All reports presented at the conference, showed that the lumber trade was in a flourishing condition. Stocks of coast mill men were also shown to be considerably reduced for this time of the year. The cement situation is steady, and large stocks are coming forward from the lake ports. It is interesting to note that Winnipeg had the largest figures in building permits for the past month of any city in Canada, and this, notwithstanding the conflicting reports of crop failure in some parts of the West, principally in the southern portions of the three prairie provinces.

The price of fuel is still slightly higher, but on the whole, quotations are steady, and on the local market are as follows:—

Anvils.—Per pound, 1 1/2 to 1 3/4 c.; Buckworth anvils, 80 lbs., and up, 10 1/2 c.; anvil and vice combined, each, \$5.50

Axes.—Chopping axes, per dozen, \$6 to \$9; double bits \$12.10 per dozen.

Barbed Wire.—4 point and 2 point, common, \$3.15 per cwt.; Baker, \$3.20; Waukegan, \$3.30.

Bar Iron.—\$2.50 to \$2.60.

Bars.—Crow \$4 per 100 pounds

Beams and Channels.—\$3 to \$3.10 per 100 up to 15-inch. (4, 30, 41, 50, 118, 119, 127, 132, 145, 176.)

Boards.—No. 1 Common Pine, 8 in. to 12 in., \$38 to \$45; siding, No. 1 White Pine, 6 in., \$55; cull red or white pine or spruce, \$24.50; No. 1 Clear Cedar, 6 in., 8 to 16 ft., \$60; Nos. 1 and 2 British Columbia spruce, 4 to 6 in., \$55; No. 3, \$45.

Bricks.—\$11, \$12, \$13 per M, three grades.

Building Paper.—4 1/2 to 7c. per pound. No. 1 tarred, 84c. per roll; plain, 60c.; No. 2 tarred, 62 1/2 c.; plain, 56c.

Coal and Coke.—Anthracite, egg, stove or chestnut coal, \$9.75 large lots to \$10.50 ton lots, net, Alleghany soft coal; carload lots, basis, Winnipeg, f.o.b., cars, \$6 per ton; canal coal, \$10.50 per ton; Galt coal, \$9 f.o.b., carload lots, \$9 single ton; coke, single ton, \$7 at yard; large lots, special rates. American coke, \$11 to \$11.50 a ton; Crow's Nest, \$10 a ton.

Copper Wire.—Coopered market wire, No. 7, \$4 per 100 lbs.; No. 6, \$4; No. 10, \$4.06; No. 12, \$4.20; No. 14, \$4.40; No. 16, \$4.70.

Cement.—\$2.40 to \$2.75 per barrel in cotton bags.

Chain.—Coil, proof, 1/4-inch, \$7; 5-16-inch, \$5.50; 3/8-inch, \$4.90; 7-16-inch, \$4.75; 1/2-inch, \$4.40; 5/8-inch, \$4.20; 3/4-inch, \$4.05; logging chain, 5-16-inch, \$6.50; 3/8-inch, \$6; 1/2-inch, \$8.50; jack iron, single, per dozen yards, 15c. to 75c.; double, 25c. to \$1; trace-chains, per dozen, \$5.25 to \$6.

Copper.—Tinned, boiler, 26 1/2 c.; planished, 29 1/2 c.; boiler and T. K. pils. plain, tinned, 45 per cent. discount.

Dynamite.—\$11 to \$13 per case.

Hair.—Plasterers', 90c. to \$1.15 per bale.

Hinges.—Heavy T and strap, per 100 lbs., \$6 to \$7.50; light, do., 65 per cent.; screw hook and hinge, 6 to 10 inches, 5 1/2 c. per lb.; 12 inches up, per lb., 4 1/2 c.

Provincial Steel Co.

LIMITED,

COBOURG, - - ONTARIO

DEPARTMENT A.

MANUFACTURERS OF RE-ROLLED RAILS

Ranging in size from 20 to 70# per yard inclusive.