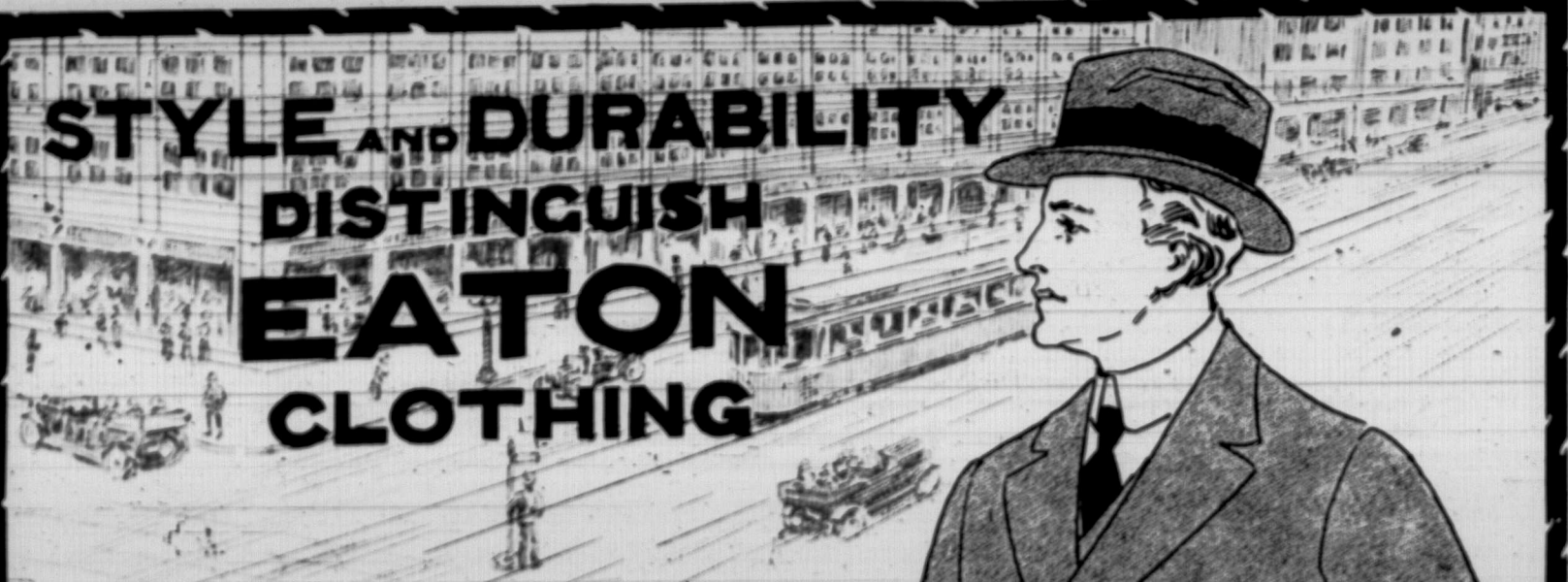


**STYLE AND DURABILITY  
DISTINGUISH  
EATON  
CLOTHING**



A Copy of  
the New  
**EATON**  
Catalogue  
is yours  
for a  
post  
card.



**THIS BOOK**

is Western Canada's price guide to economical living, and you will do well to consult it in all your buying. If you have not received your copy we want to place one in your hands immediately, so do not delay.

**SEND FOR IT NOW**

**THE NEW EATON CATALOGUE**

**SPELLS ECONOMY ON EVERY PAGE**

Our New Fall and Winter Catalogue is just brimming over with exceptional values in every-day wants, Men's, Women's and Children's Wearing Apparel, and all farm needs, including Implements, Machinery, Wagons and Harness.

The need for things that winter weather makes so necessary—Heavy Clothing, Stoves, Building Paper and innumerable others is no doubt on your mind at this time.

**EATON'S** have anticipated your demands along those lines far in advance. In some cases six months and in others a year and even more. It is this foresightedness in merchandising that permits a selection so wide and varied as this store offers and at prices so consistently reasonable.

We invite you to examine this book, our new Fall and Winter Catalogue and would suggest comparison which is the best method of determining true value. Your name and address is sufficient and will send a copy of this book on it's way to you immediately.

**SEND FOR IT TODAY**

**A List of Booklets Subsidiary to Our General Catalogue**

Along many lines where detailed description is so necessary in order to make satisfactory selection, we have issued special booklets for your convenience. This list of booklets includes: Men's Clothing, Wall Paper, Modern Plumbing, Modern Homes and Farm Buildings.

**ANY WILL BE SENT FREE UPON REQUEST**

**THE T. EATON CO LIMITED**  
**WINNIPEG CANADA**



**THIS IS SUIT NO. 13A1931**

A particularly clean looking herringbone weave in attractive grey shade. Men who suit the double breasted style will find this an ideal suit for every day wear. Pants have belt loops; two side, one hip and one-watch pocket.

**13A1931—**  
In sizes 36 to 44 inches chest measure and 30 to 34 inches leg measure Give height and weight when ordering.

**PRICE PREPAID 11.50**

son  
We  
anr  
Me  
in t

M  
Wor  
The  
in C  
cam  
who  
out  
far  
thei  
the  
the  
son  
of C  
men  
clusi  
sessi  
min  
they  
thei  
of a  
for  
the  
cons  
has  
whic  
the  
are  
war  
and  
dang  
this

In  
the i  
sever  
food  
imme  
kind  
some  
war.  
pres  
type  
of ot  
reco  
prod  
was r  
was  
the  
help  
was  
when  
ducti  
of liv