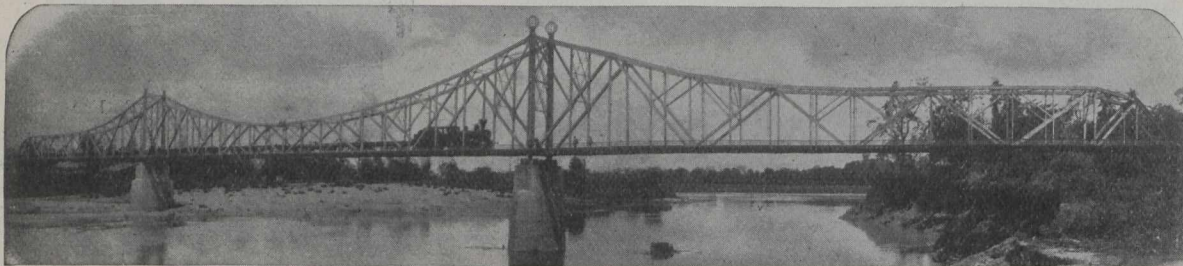


Cleveland Bridge^{a n d} Engineering Company, Limited. DARLINGTON ENGLAND



Bridge over the River Menam designed and constructed for the Royal Siamese State Railways.

Specialists in the Design, Manufacture and Erection of Bridges and all classes of Iron and Steel Structural Work.

CANADIAN OFFICE

- Canadian Express Building -

MONTREAL, QUE.

Montreal
Toronto
St. John, N.B.
Winnipeg
Calgary
Edmonton and
Vancouver

The J. C. McLAREN BELTING CO.,

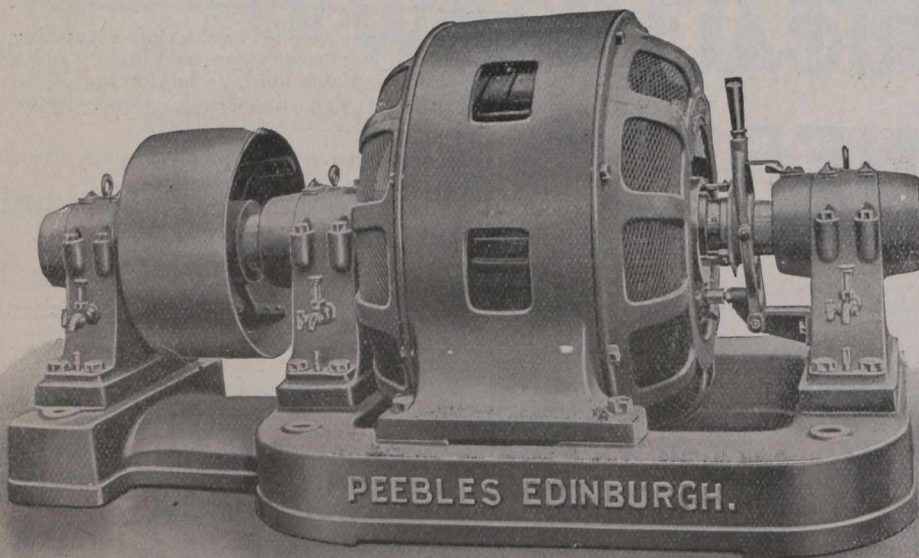
Manufacturers and Dealers in

LIMITED

**Belting, Card Clothing, and
Mill Supplies.**

Bruce, Peebles & Company, Ltd.

Engineers & Contractors to the British Admiralty, War Office, India Office, etc.



A.C. & D.C. Motors
and Generators

La Cour
Converters

Crane Motors

Turbo Generators

Slow Speed
Haulage
Motors

Peebles Open Type Slip Ring Induction Motor (With Short-Circuiting Gear).

Vandeleur & Nichols, Dineen Building, TORONTO
Sole Canadian Agents.

Montreal Representative: A. P. BURY, 263, St. James St.