

BOUGHT MAN TO SMOKE AT WORK?

London Lancet Asks — Says Question Calls for Investigation by the Industrial Fatigue Research Board.

The question of labor efficiency in relation to tobacco-smoking has been revived in a prominent fashion by the

**WHEN USING
WILSON'S
FLY PADS**
READ DIRECTIONS
CAREFULLY AND
FOLLOW THEM
EXACTLY

Best of all Fly Killers 10c
per Packet at all Druggists,
Grocers and General Stores

**SCOTCH
SNACK**
The delicious Fish Food
with the Spicy Flavor.

Delightfully seasoned—
ready to spread on bread
or biscuits—finds for sand-
wiches, salads and co-
quettes. Ready to serve.
A treat for lunch and
supper—and evening
parties.

Try a Jar — At All Grocers.

creasing practice of smoking in the workshops, says the London Lancet. It seems clear that in many cases the practice is tolerated by authority, and the anti-tobacco protagonists may soon be expected to put forward their case against this innovation based on the ill to which it may give rise, when the evils of nicotine will be emphasized. The abuse of tobacco is well recognized, and that the smoke from it, especially when inhaled has definite toxic properties must be admitted.

Not Conclusive.

A few years ago we furnished analysis from The Lancet Laboratory showing how the smoke from cigarettes, pipes and cigars differs, amongst other things in nicotine content. The result showed that while nicotine is a highly poisonous constituent of tobacco, the evidence was not conclusive that this alkaloid invaded the consumer to the extent hitherto accepted.

There was more nicotine found in the smoke from the cigar and pipe than from the cigarette, the suggestion being that in the last case a large proportion of the nicotine was destroyed by combustion. There are, however, other bases found, probably of a toxic character, and there is present also an appreciable amount of carbon monoxide.

Certain processes which entail the manipulation of poisonous materials, such as lead and arsenic, must always contraindicate smoking since the toxic substances may be carried to the mouth by soiled fingers, pipe stems, or cigarettes, and the same contraindication exists where there is risk of fire or explosion.

A Fact to Face.
But when all is said we must face the fact that those who have acquired the habit of smoking are more contented when permitted to indulge in it and are irritable when it is prohibited. Today the psychology of the worker is rightly receiving more and more attention, and a real and strong case must exist before anything which promotes contentment is prohibited.

Smoking on an empty stomach—e.g., before breakfast and more than three hours after the last meal—seems to be felt injuriously by many subjects, while smokers generally appear to hold that smoking directly after meals promotes digestion; the belief is widespread and calls for consideration.

The custom now rapidly increasing in industrial work of introducing short mid-

morning and mid-afternoon pauses, during which time tea-trays go round with light refreshment—a practice recommended so long ago as 1861 by medical men—provides reasonable opportunities for allowing smoking.

Data Asked For.

Cases have been quoted of increased output following permission to smoke;

but we are not aware of any data of scientific value either to justify or to contradict this claim. The question, which is not without importance, calls for investigation, and, we suggest, is worth the attention of the Industrial Fatigue Research Board.

USE The Want Ad Way

For a
Quick
Change
After Work

NO tussle or
annoyance
to get out of
your work gar-
ments and into
your "other
clothes" for the
enjoyment of a
social evening
or a few hours at the theatre.



KITCHEN'S "Railroad Signal" WORK SHIRTS

not only afford convenience in dressing, but they are durable to the last button. Kitchen's are for long wear. They wash up soft and fresh. They are cut to fit as well as any dress shirt. Insist on Kitchen's.

MADE ONLY BY
The Kitchen Overall and Shirt Co. Limited
Exclusive makers in Canada of famous "Railroad Signal" Overalls
Brantford, Ontario

Awful Possibility.

An Australian dignitary was being entertained by New York society. For what seemed to be endless nights he was dragged through the intricacies of the pigeon-walk, the fox-trot, the camel-ling and the rest. At last came his day of departure.

"Please madam," he implored of his late hostess as they parted at the gang-plank. "don't ever come to Australia."

"But, wh-wh-why not?" gasped that surprised and offended lady.

"Because," answered the Australian, wiping his brow, "I don't want you ever to see a kangaroo at play."

Too Profound Knowledge.

He was important and he looked it. Bent almost double, he endeavored to get a glimpse into the interior of Vesuvius.

"By Jove," he exclaimed. "How it reminds me of Hades!"

"O Horace," protested the newly-wedded wife. "You never told me you'd been there."

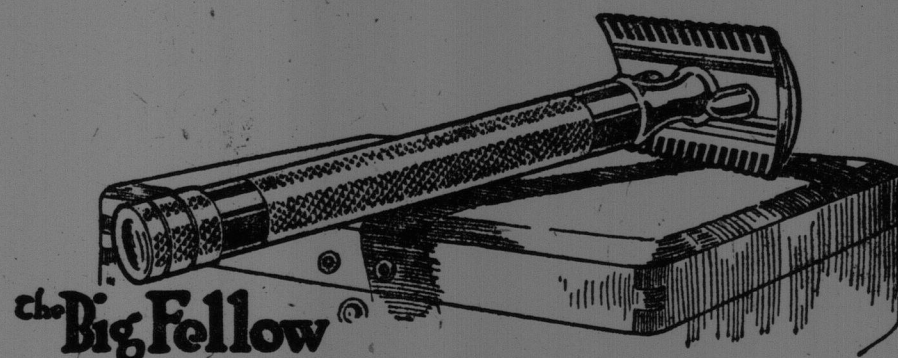


**Maritime
CAPS**

Distinctive Styles
Irreproachable Quality
Unlimited Variety

Ask Your Favorite Store.

MARITIME CAP LIMITED, - MONCTON, N. B.



Evolution— The Survival of the Fittest

Until the introduction of the Gillette Safety Razor, no man dared to shave without stopping his razor. Now mark the tremendous progress that has been made in shaving methods within a generation!

20,000,000 Men Use the Gillette Today

Today, twenty million men never think of stopping or honing, because they find, with the keener edges of the Gillette Blade, the necessity has vanished.

It is evolution—the survival of the fittest. Away with all unnecessary parts, stops, hones, etc. They are becoming as obsolete as the starting crank on an automobile.

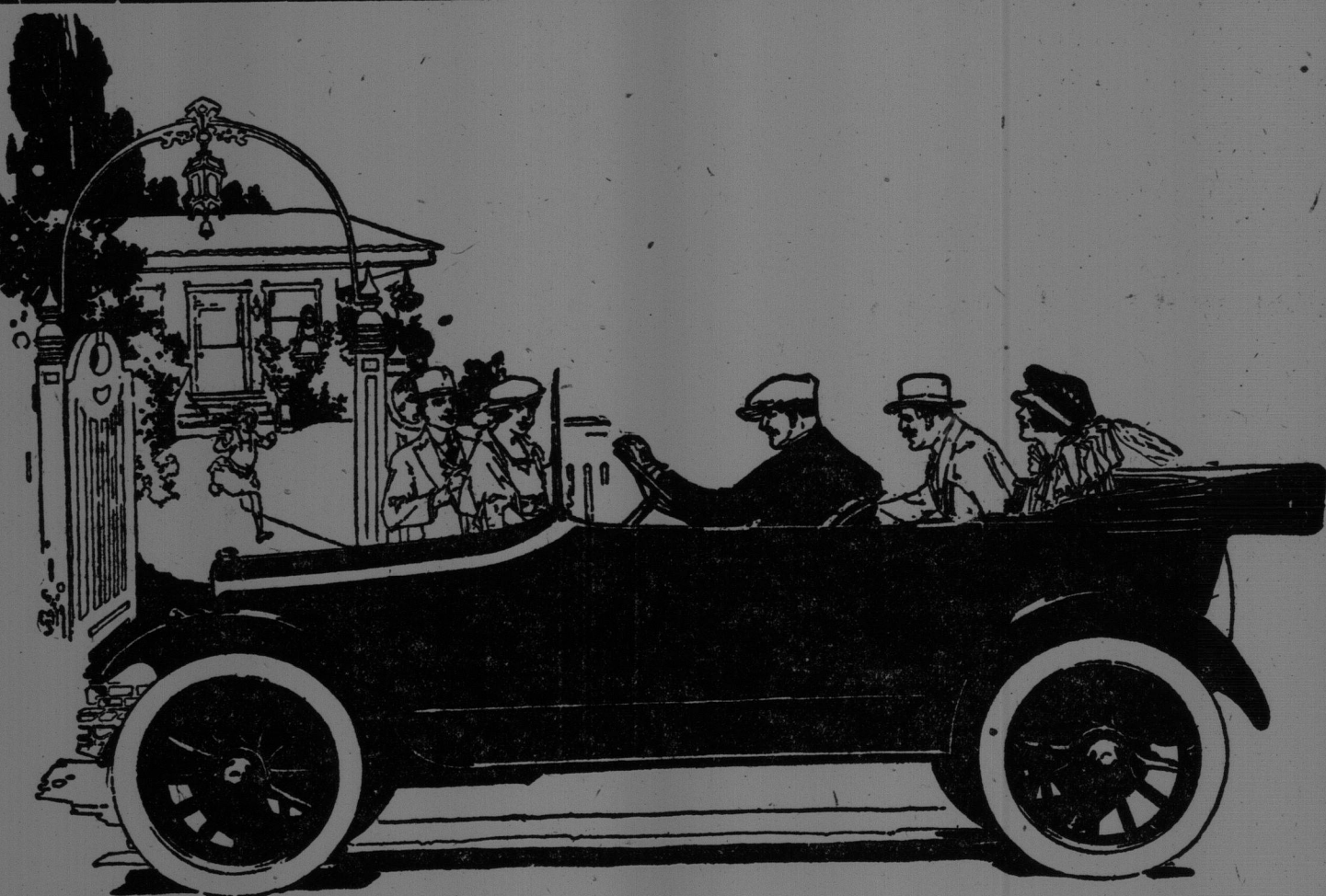
The "Big Fellow" Gillette Safety Razor, shown above, is the latest evolution. It was created to meet the needs of men who want a sturdier, heavier handle than that of the Standard Gillette.

But you had better see the whole Gillette line at your nearest dealers', and make your choice. The price is \$5. per set.

MADE IN CANADA
No Stopping MARK No Honing
KNOWN THE WORLD OVER

734

GRAY-DORT



UNIT by unit, and feature by feature, a comparison shows the Gray-Dort to be bigger or stronger or better than other light cars. The motor is bigger, with cooling system to match; 40-pound crankshaft; three-ring pistons; Westinghouse starting and lighting; big axles; long springs; deep upholstery; hand-tailored top; side curtains opening with the doors; Thermoid brake-linings. Any man who will take the trouble to measure and weigh and test the units of light cars will be able to see and feel the value which is in the Gray-Dort.

This value has made sales so rapid that you should see the Gray-Dort dealer at once to be sure of securing your car.

Wm. Pirie Son & Co., Ltd., St. John.

M. J. Scullin—St. Stephen.
J. H. Berrie—Hillsboro.
W. W. Boyce—Fredericton.
W. C. Albert—Edmundston.
Landry & Frenette—Bathurst.
The National Garage, Limited—Sussex, N.B.

A. H. L. Bell—Woodstock.
A. O. Fowles—Moncton.
Keith Redstone Co.—Havelock.
Rideout Bros.—Grand Falls.
Charles M. McLaughlin—Newcastle.

PRICES ALL TAXES INCLUDED	
Model 15	Regular \$1,575
" 15M Special	\$1,746
" 15D Ace	\$1,862
" 10 Roadster	\$1,575
All f.o.b. Factory— Freight Only Extra	

GRAY-DORT MOTORS, LIMITED



When Gas Is High Buy This Car and Use Less

SEVERAL years ago our engineers designed, our workmen built, this car for conditions today.

—And today, Overland owners in Canada are reaping the benefits of increased service at decreased cost.

Witness these owner-records, which are writing a new chapter in Canadian automobile history.

Over roads still partly frozen, a Bridgewater, N. S., owner drove his Overland 107 miles—got 26.75 miles to the gallon.

A St. Hyacinthe, Que., traveller covered 630 miles—average gas mileage 30 miles per gallon.

A Toronto business man drove to Kitchener and back, making an average of 31.88 miles to the gallon.

A Mineota, Man., farmer reports the high average of 34 miles to the gallon.

Just now we offer immediate deliveries on this Canadian car of comfort and economy. See it today at our sales room's.

J. A. PUGSLEY & CO., LIMITED, ST. JOHN.

Woodstock Dealers: J. C. Watson & Co., Limited.
St. Stephen Dealers: McWha & Buchanan.
Perth Dealer: George E. Armstrong.
Sussex Dealers: The National Garage Co., Limited.

Head Office and Factories: Willys-Overland Limited, Toronto, Canada
Branches: Toronto, Montreal, Winnipeg and Regina