

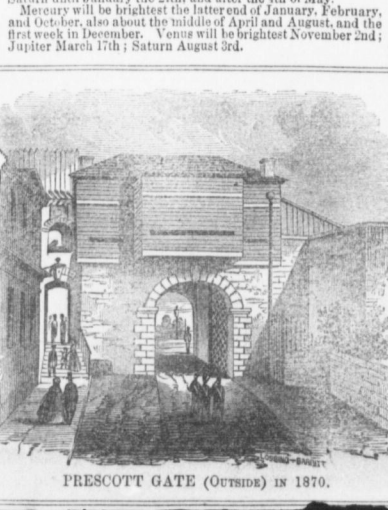
THE QUEBEC ALMANAC

For the Year of our Lord 1874 Being second after Leap Year.

PALACE GATE (Outside)

EPOCHS, THE SEASONS, ECLIPSES, PLANETS, PHASES OF THE MOON (January, February, March, April)

FIRE ALARM SIGNAL BOXES. ST. LEWIS WARD, PALACE WARD, CHAMPLAIN WARD, PETERS WARD, JACQUES-CARTIER WARD, ST. ROCH WARD, MONTREAL WARD, ST. JOHN'S WARD



PRESCOTT GATE (Outside) in 1870.

PHASES OF THE MOON (May, June)

PHASES OF THE MOON (July)

PHASES OF THE MOON (August)

PHASES OF THE MOON (September, October)



OLD ST. JOHN'S GATE (Inside) in 1864.

FETES D'OBLIGATION, MOVABLE FESTIVALS

PHASES OF THE MOON (November, December)

PHASES OF THE MOON (January, February)

PHASES OF THE MOON (March, April)

PHASES OF THE MOON (May, June)

CONSULATES. Belgium, Prussia, Great Britain, etc.



ST. LEWIS GATE (Outside) in 1870.

DOMINION OF CANADA

GOVERNOR-GENERAL OF CANADA, Privy Council, Justices of the Peace

COURTS OF JUSTICE

APPEAL JUDGES, JUSTICES OF THE PEACE, SUPERIOR COURT

CUSTOM HOUSE

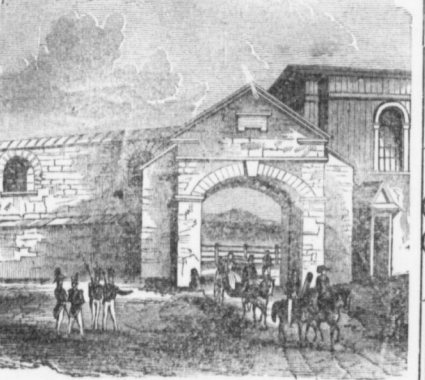
REGULATIONS AND RATES, BANKS

POST OFFICE

REGULATIONS AND RATES, CANADIAN STAMP DUTIES

BOARD OF TRADE

QUEBEC EXCHANGE, HARBOUR COMMISSIONERS, TRINITY HOUSE



HOPE GATE (Inside)

INLAND REVENUE OFFICE

Supervisor of Cutlers Office, Crown Timber Office, Bookbinders & Booksellers

MIDDLETON & DAWSON, Stationers and Printers

QUEBEC