

ABERDEEN SCHOOL, MONCTON, N.B.

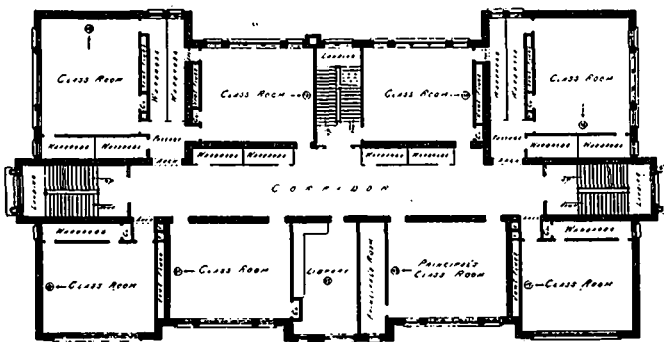
F. NEIL BRODIE, ARCHITECT, ST. JOHN, N.B.

## At MARITIME PROVINCE SCHOOL

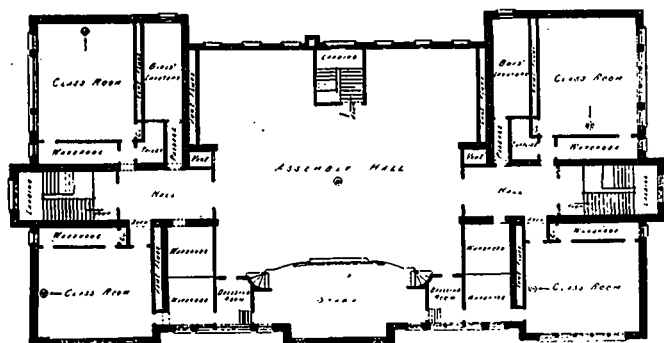
The largest school building in the Maritime Provinces is the new "Aberdeen," recently erected at Moncton, N.B. It contains twenty class rooms, an assembly hall seating nine hundred persons, waiting room, library, armory, shooting gallery, playrooms and girls' and boys' sanitariums.

The building is of concrete and stock brick, with terra cotta cornice and portico columns. The columns, which are four feet six inches in diameter and forty feet in height, are an exceptionally fine and effective piece of work.

The interior trim is of Douglas fir, and all floors are of selected birch.



FIRST FLOOR PLAN, ABERDEEN SCHOOL, MONCTON, N.B.



SECOND FLOOR PLAN, ABERDEEN SCHOOL, MONCTON, N.B.

The class rooms, twenty-six by thirty-two feet, with twelve-foot ceiling, have burlap wainscoting and are furnished with slate blackboards, teachers' cabinets, etc.

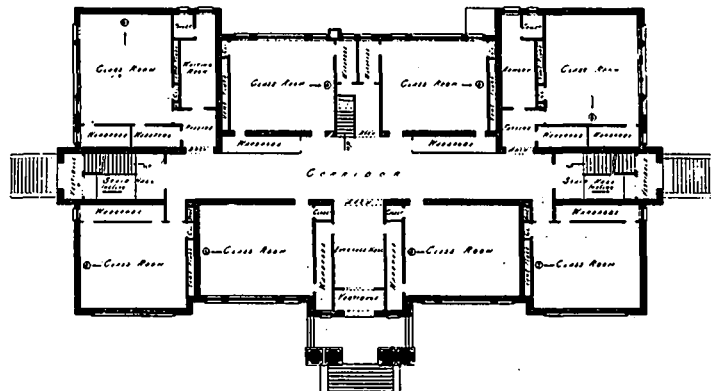
The general toilet rooms are in the basement, while additional toilets are provided on the third floor. All toilet rooms have individual porcelain water closets.

There is a bubble drinking fountain on each floor, and, also, a three-inch standpipe with two and one-half-inch hose reel for fire protection.

The building is lighted by electricity, and has a fire alarm system, with two "break glass" stations on each floor.

The heating and ventilating system has successfully passed a severe practical test, since, in the month from January 15 to February 15, with the thermometer below zero for nineteen days, the building was comfortably heated at an average cost of \$6.70 per day. The system is direct radiation and warm air forced by an electrically-driven fan. There are two smokeless fire-box boilers, and the fuel is natural gas. The cost of the building was about \$104,000.

Man has in him by nature but one good thing, the capability of improvement.—Stuart Mill.



GROUND FLOOR PLAN, ABERDEEN SCHOOL, MONCTON, N.B.