

Illustrated News

VOL. X.—No. 12.

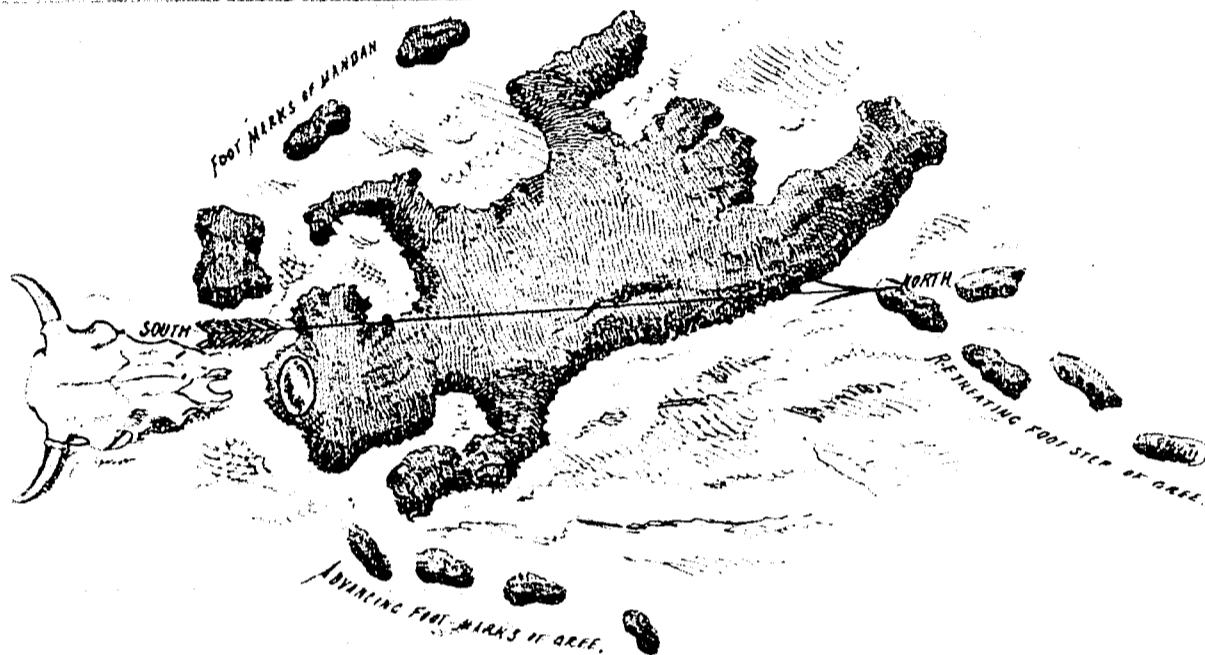
MONTREAL, SATURDAY, SEPTEMBER 19, 1874.

SINGLE COPIES, TEN CENTS.
\$4 PER YEAR IN ADVANCE.

SKETCHES IN THE NORTH-WEST.

Our special artist with the North-west Mounted Police, writing on the 29th July, gives the following details respecting the subjects of the two sketches given below:—

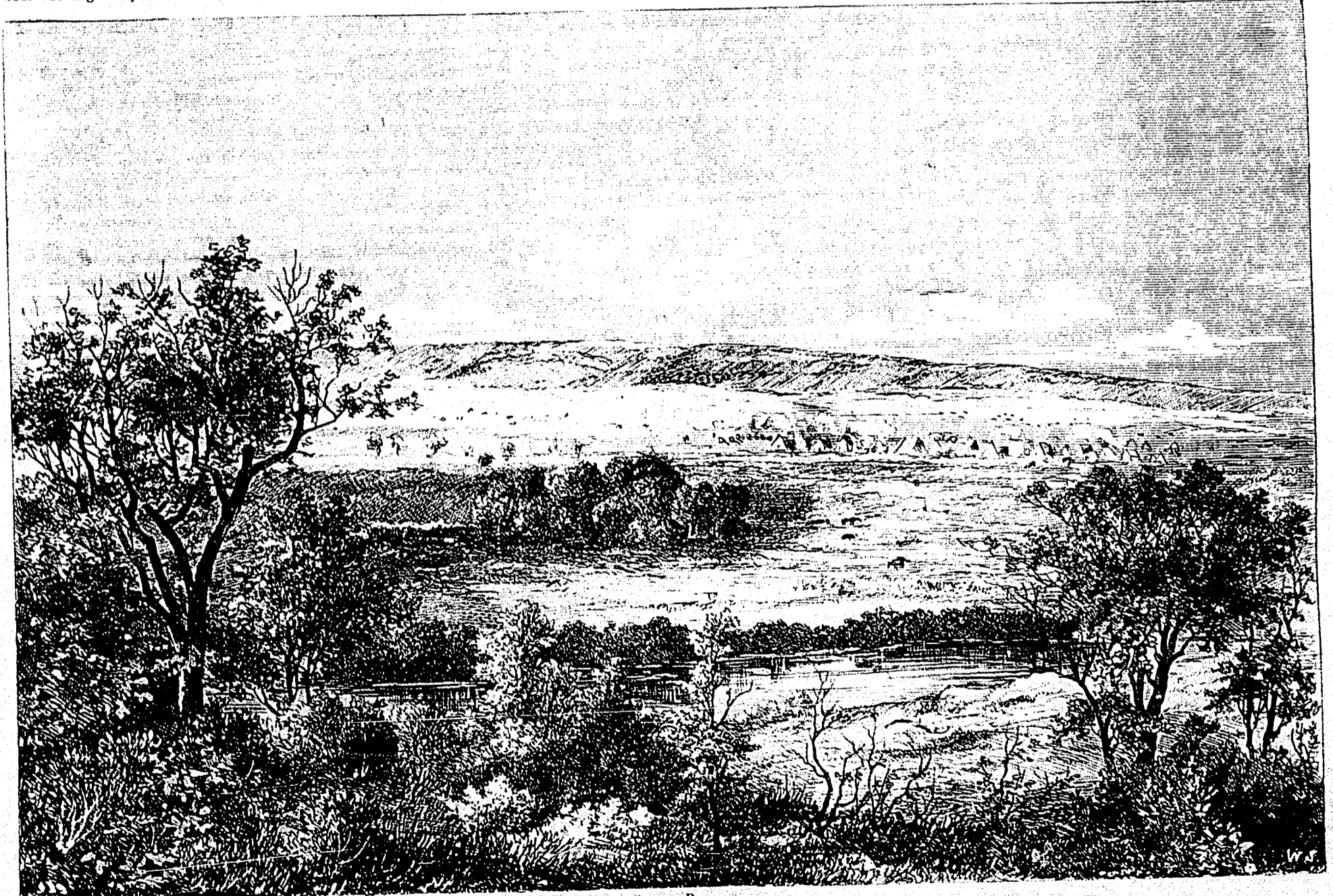
The Mounted Police camped on the near-side of Riviere des Lacs, on the opposite side of which is the historical Butte Marquée. Some sixty or seventy years ago the Crees were at war with the Mandans, a tribe frequenting the hunting-grounds of the Missouri. A party of each were on the war-path about this part of the country. One morning before sunrise, when the mist was not yet off the ground, a Cree left the camp to examine the surrounding country from the highest point of land



INDIAN FIGURE ON MURDERED SCOUT HILL.

thereabout. This was Butte Marquée, as it was afterwards called by French half-breeds, or in English, Murdered Scout Hill. There he perceived a Mandan in a sitting posture, also anxiously looking about for enemies, his back turned to the Cree. The latter took a large round stone weighing about 15 lbs., crawled silently up to his enemy and killed him. To memorialize the place, with his tomahawk he dug out the form of a man, being on his back, his legs spread out and arms stretched back of his head. The figure measures above twelve feet in length. The approach is also marked out for some sixty feet by dug-out footmarks. Such is the story as related to me by old hunters on these grounds.

"The Souris River, on the bank of which we are camped for the



SOURIS RIVER.

SKETCHES IN THE NORTH-WEST.—BY OUR SPECIAL ARTIST WITH THE MOUNTED POLICE.