

WHITE STAR-DOMINION LINE

MONTREAL TO LIVERPOOL

S.S. Canada, Nov., 5th S.S. Megantic, Nov., 12th
S.S. Cornishman, Nov. 12th S.S. Dominion, Nov. 19th
All above Steamers carry passengers except S.S. Cornishman

PORTLAND TO LIVERPOOL

S.S. Welshman, Nov. 26th S.S. Laurentic, Dec. 3rd
S.S. Canada, Dec. 10th
(S.S. Laurentic and S.S. Canada carry passengers)

MONTREAL TO BRISTOL

S.S. Englishman, Nov. 5th S.S. Turcoman, Nov. 19th

WHITE STAR - DOMINION LINE

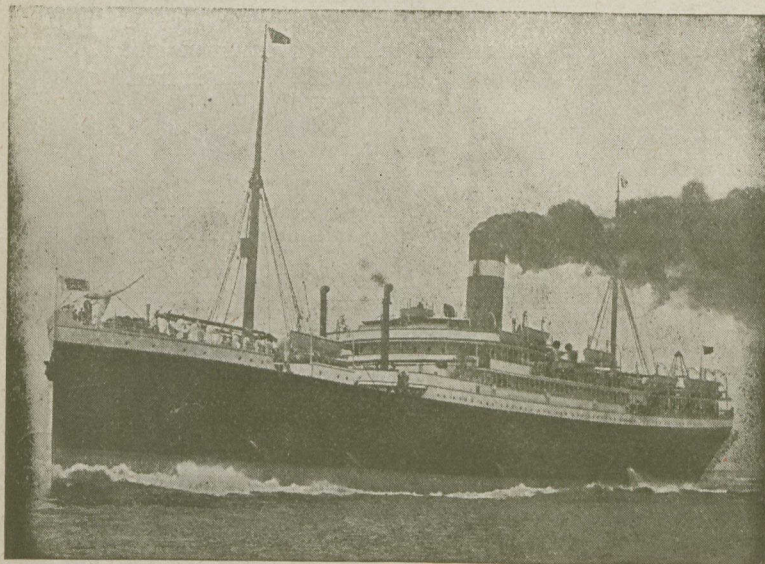
Favorite steamers for all kinds of perishable cargo, having fan ventilation, cold storage and cool air chambers.

M. A. OVEREND }
J. W. WILKINSON } Travelling Freight Agents

MONTREAL OFFICE, 118 Notre Dame St. W.
PORTLAND OFFICE, - - - 1 India St.

GEORGE W. TORRANCE, Freight Agent,
28 Wellington St. E., TORONTO

Mention the Canadian Horticulturist when writing



ALLAN LINE

ROYAL MAIL

WEEKLY SERVICES

VIA
The St. Lawrence Route

30-STEAMSHIPS-30
(176,000 TONS)

The First Transatlantic Line to adopt Turbine Engines.

SAILINGS AS UNDER:

FRIDAYS FOR LIVERPOOL
SATURDAYS FOR GLASGOW
SATURDAYS FOR . . . LONDON and HAVRE

THE ALLAN LINE

Has Spared No Expense in Equipping Cold Storage, Cool Air and Ventilated Chambers, for the carriage of Fruits, Meats, Butter, Cheese and other Perishables.

VIRGINIAN Triple Screw GRAMPIAN }
VICTORIAN Turbine Engine HESPERIAN } Twin Screw
TUNISIAN } Twin Screw IONIAN }

And 23 Other Ships

Record Passage Liverpool, 6 days 15 hours, 3 minutes.
Record Passage Glasgow, 6 days, 18 hours.

For Full Particulars apply to

The ALLAN Line, 77 Yonge St., Toronto