

Meeting of  
E. Cathedral

most successful and  
meetings of the par-  
C. of E. Cathedral and  
Mission Church was held  
Building at 8 o'clock  
the Rev. Canon White,  
and gave a short  
to commence of  
reports for the past  
and adopted. Never  
memory of the parish  
returns from the  
in connection with  
such a flourishing con-  
the fact that a large  
ing men have a central  
land Regiment and  
the Finance Com-  
a surprising increase  
of church dues. The  
pathy was ordered to  
o. Davey, who though  
able to be present.  
Wardens and  
and resulted in fol-  
ed as Clergy Women  
Cathedral; Mr. A. J. Row,  
People's Welfare Soc-  
federal, re-elected and  
ory, St. Michael's re-

ected by hand-  
ood, Sir Joseph inter-  
B. Grieve, Hon. D.  
ers, C. McK. Harvey,  
Geo. A. Hutchings, Geo.  
G. Collier, W. K. Gray,  
H. E. M. LeMessurier,  
Geo. A. Hutchings, W.

the Finance Committee:  
ry, P. E. Outeridge,  
Stanley W. Coker, H. H.  
am Godden, William  
ers Jacobs, Sergeant  
rgt. Long, Albert Pitt-  
White, Edward T. Row,  
Geo. Davey, Jr.,  
the Cemetery Board:  
G. Collier, F. C. Wells,  
T. Pope,  
Industrial Society—  
Winsor, Wm. Ewing.

## s Store News

MAY, MAY 4th, 1916.  
d to be able to an-  
now have a full line  
tooth brushes, hard,  
unbleached, the latest  
new idea. This last  
very fine brush. The  
Brush has long been  
country and now no  
foundation. But we have  
brushes for some little  
of our customers will  
of the arrival of this  
(hard) and medium  
and 40c.

Tooth Paste with  
and you get the  
ple combination. Price

## s Fill Your

der from

FRESH

PLIES.

S &amp; CO.

LIMITED.

Water Street

New York Turkey

New York Chicken

New York Ducks

New York Sausages

N. Y. Corned Beef

Cucumbers.

Parsley.

Lettuce.

Radishes.

Fresh Celery.

Pe Tomatoes.

Pe Potatoes.

African Cabbage.

Parsnips, Beet.

sh Eggs.

Smart Apples.

Artlett Pears.

Bananas.

Grape Fruit.

Red Oranges.

Pineapples.

Cooking Apples.

Musket Apples.

RED HERRING.

EN HADDIES.

POINT OYSTERS.

FRESH HALIBUT.

FRESH SALMON.

Loch Fyne Herring.

The bundles.

Pickled Herring.

Small kags.

BRISH HAMS.

BRISH BACON.

FRESH SUPPLY

Kuylen's

lectionary.

MEMBER OUR

ELEPHONES.

482 and 786

THE ALL - IMPORTANT WEEKLY  
ECONOMY PAGE

is crammed full of ALL NEW THINGS for Spring Wear. Be on hand

Friday, Saturday &amp; Monday.

NOT A BIT TOO EARLY WHEN THEY COME  
AS A BIG BARGAIN!

## Boys' American Wash Suits.

Odds and ends and incomplete lines from a big New York House; many pretty styles in White Jean, Khaki Drill, Blue Linens, Khaki and Tan tone suits. You will find the pretty little Dutch Suits among these also; sizes to fit boys 2 to 8 years; we make two Special Prices of the lot Friday, Saturday and Monday  
Reg. 90c. values for .59c Reg. \$1.50 values for .95c  
GET IN LINE FOR THESE VALUES EARLY.

'Tis House-Cleaning Time--Needs are Many  
--Cut Prices on these Needs are Here.

## Pillow Cases.

Full size, made of extra strong Pillow Cotton, with hem-stitched edge, size 18 x 28. These will surely give satisfac- tory wear. Reg. 35c. Friday, Saturday and Monday . . . 31c

Battenburg  
Tea Cloths.

Just a dozen of these, size 36 x 36, over 60 point edge, very handsome with White Linen and openwork centre; just opened. Reg. 90c. Friday, Sat- ury and Monday . . . 80c

## Breakfast Cloths.

3 doz. of these in heavy Un- bleached Damask, with Crim- son border and frayed edge; a save on your better cloths. Reg. 85c. Friday, Saturday and Monday . . . 78c

## Table Damask.

Another lot of Pure White Table Damasks, 58 inches wide. This is a great seller and offers pretty good value. Reg. 35c. Friday, Saturday and Monday . . . 32c

## Sideboard Cloths.

2 dozen of handsome Batten- burg Sideboard Cloths, 14 x 68. White Linen and rather pretty openwork centre; a new arrival. Reg. 75c. Friday, Sat- ury and Monday . . . 69c

## Job Table Cloths.

23 only of Superior English Dapaak Table Cloths, size 70 x 70, all white, handsome designs, about the finest we have ever handled; value for \$3.50. Friday, Saturday and Mon- . . . \$2.85

## Pillow Cotton.

220 yards of 40 inch Circular Pillow Cotton, strong cloth; surprising value. Our regular 40c. per yard. Friday, Saturday and Monday . . . 35c

## Curtain Nets.

3 pieces of Pure White Not- tingham Lace Curtain Nets, the newest patterns just opened; 54 inches wide. Our regular 25c. per yard. Friday, Sat- ury and Monday . . . 22c

## D'Oyleys

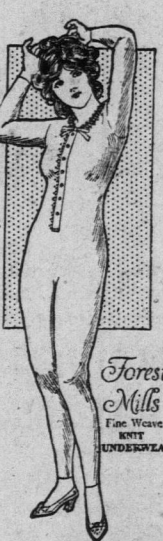
3 dozen of dainty Teneriffe D'Oyleys, circular, 10 inches in diameter, nice for table centre. Reg. 12c. Friday, Sat- ury and Monday, each . . . 10c

## Bed Spreads.

Another shipment of those extra heavy all White Bed Spreads which sold readily dur- ing our White Sale, heavily em- bossed, designs are pleasing, full size, suitable for double beds; a really inexpensive white quilt that is a pleasure to own; value for \$2.50. Friday, Sat- ury and Monday . . . \$2.15

## English Sheeting

2 pieces of Pure White Heavy Twilled English Sheatings, about 90 inches wide, extra strong. This represents old value, nothing like it to-day at the price. Reg. 50c. per yard. Friday, Saturday and Mon- day . . . 45c

Inexpensive Loveliness of Spring Apparel  
in the SHOWROOM.

## Militant Middy Dresses.

For Children from 6 to 14 years, rather smart looking, with White Middy Top, plaid and plain linen pleated skirt, be- coming collar, lace in front, pocket and pings. Reg. \$2.00. Fri- day, Saturday & Monday . . . \$1.59

## Corset Waists.

For Children, these are buttoned in front and laces behind, buttons attached for suspenders and straps over shoulders; assorted sizes. Reg. 35c. Friday, Sat. & Monday . . . 29c

## NIGHT GOWNS.

For Children and Misses, they come in fine White Lawn, pretty embroidery and insertion yoke, V. neck and long sleeves; others in round neck and ¾ sleeves, ribbon beading, short waist effect; to fit 6 to 14 years. Reg. 85c. Friday, Saturday and Monday . . . 72c

Children's  
Sweater Coats.

Snug Wool Sweater Coats, in shades of Cardinal, Maroon, Navy and White, rolled collar, side pockets; sizes to fit child- ren from 6 to 12 years. Reg. \$1.90. Fri, Sat. and Monday . . . \$1.68

Job Line  
HAT WREATHS

Quite a variety of these showing rose-buds, buttercups, marguerites and many other popular artificial flowers, nice for children's hats. Regular to 25c. Friday, Saturday and Monday . . . 15c

## Stair Pads.

20 dozen of round nose well padded Stair Pads, size 22 x 3, makes stair climbing easy and noiseless and a sure save on your stair carpet. Special, Friday, Saturday and Monday, each . . . 10c

## Towels.

We have a big shipment of un- bleached Turkish Towels, me- dium size, plain ends, suitable for rough wear. Special, Fri- day, Saturday and Mon- day, each . . . 15c

## Ladies' Combinations

In pure White, fine Jersey ribbed, with short sleeves, and your choice of knee or ankle length, finished with crocheted edge. Reg. 60c. Fri- day, Saturday & Monday . . . 49c

## Infants' Bonnets

Cute little shapes in White Silk, trimmed with cord and silk edging; others in plain White Repp; roses of Pink and Sky; a few others in Cream Nap. Friday, Saturday & Mon- day . . . 18c

## Directoire Knickers

A mid-weight, very desirable for present wear, the colour range is large, elastic at waist and knee band; these fit snugly and are not by any means clumsy. Reg. \$1.00. Clearing Friday, Saturday and Mon- day . . . 59c

## Winsor Ties.

The newest New York styles, in Silk and Crepe-de-Chene, handsome shaded colours of Saxe, Pink, Sky, Green, Purple, etc., a host of very striking plaids and stripes; they're dressy. Reg. 40 cents. Fri- day, Saturday and Mon- day . . . 36c

## Blind Lace.

3 pieces of Cream Soutache Lace, 5 inches wide, strong pat- terns; freshen up your blinds. Reg. 10c. Friday, Satur- day and Monday . . . 8c

## Boys' Shirt Waists.

Perfect fitting and well made, a variety of makes in Striped Cottons; others in Khaki and Blue Linen, 14 to 16 boys from 6 to 14 years. Reg. 40c. Friday, Saturday & Mon- day . . . 35 cents.

"May is here, the world rejoices,  
Earth puts on her smiles to greet her."

'Tis robing time, outfitting time and house-cleaning time. Demands are many on the slim purse. Mature reflection is necessary thinking about "where" to get the best possible value. The Echo of your thoughts answers

Try BAIRD'S FIRST.

## Mostly Men's Wear.

## Men's Hand'kerchiefs

A nice soft finish lawn Handkerchief, with wide size men's. Reg. 13 cents. Friday, Saturday & Monday . . . 11c

## Men's Neckwear.

Two lots, all brand new, in wide and narrow end styles, plain and fancy mix- tures; full length; values for 25c. Friday, Saturday & Monday . . . 15c

## Men's Khaki Pants.

2 shades of Heavy Drill, perfectly shaped Pants with cuff, bottom, loops for belt and 2 side straps for adjusting size; not a detail overlooked in the making, they're perfect in every way; all sizes. Regular \$1.40. Friday, Saturday and Mon- day . . . \$1.17

## Sample Line Men's Underwear

Light, medium and heavy weight Underwear in this assortment; lots of large sizes for the bigger men, in White and Natural shade. These garments are well suited for Spring and Summer wear. If you need underpants to suit the shirts we would urge you to call early, as pants are scarce. Values to \$1.50 per garment. Friday, Saturday and Monday . . . \$1.05

## Men's Top Shirts.

A complete line in all-over Neglige, smart stripe effects, in soft bosom style, with laundered cuffs; perfect fitting, well made, every detail perfect. Coat style; sizes from 13½ to 16½. Special Friday, Saturday & Monday . . . 49c

## Cut Prices on Boots, Shoes and Hosiery.

## Men's Boots.

A shape you will like in Gun Metal Calf, Blucher Cut, nice soft upper, military heel, fault- less finish. Regular \$3.30. Friday, Saturday and Monday . . . \$3.10

## Ladies' Boots.

Worthy Style in a buttoned boot, Dongola Welt and Soft Kid Uppers, with patent Tip Toe Cap and such a comfortable shape; you'll take to this boot on sight. Regular \$2.50. Fri- day, Saturday and Monday . . . \$2.35

## Ladies' Tan Shoes.

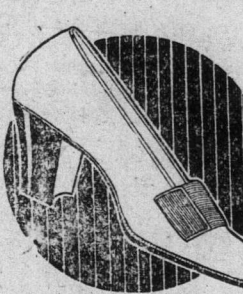
The "Elite" 4 strap shoe for street wear, nice Tan shade, faultless shape, high heel, ½ sizes to fit from. Special, Fri- day, Saturday and Monday . . . \$2.40

## Ladies' Hose

Assorted sizes in Fast Black Lisle, finely woven, full lengths; this line is in great demand. Reg. 22c. Friday, Saturday and Monday . . . 22c

## Children's Hose.

Your choice of Black or tan, finely ribbed, double toes and heels, sizes from 5 to 9½ inch. Special Friday, Saturday and Monday . . . 14c



## Ladies' Pumps.

The favored style, showing Patent Leather and Fawn Cloth combination, with large metal buckle in front; spool heel; White Kid lined. Reg. \$3.00. Friday, Saturday & Monday . . . \$2.78

## Gentlemen!

We announce the arrival of a small but select stock of English Spring Suits and Trousers, about 25 pieces of each, no two alike; also 4 pieces of fine twilled Navy Serges, marked at the very lowest possible prices.

## Boys' Pants.

The most serviceable kind of Pants for the Boys; they come in extra heavy Khaki Drill, in fact you would hardly tell them from a good Bedford Cord, open knee style, button trimmed, to fit boys from 6 to 12 yrs. Reg. up to 90c., for . . . 79c

## Boys' Jerseys.

A big stock just to hand in assorted sizes, extra strong knit, buttoned at shoulder, shades of Saxe, Navy, Cardinal, Roseda, Myrtle and Grey; just the gar- ment for spring wear. Reg. up to \$1.10. Friday, Sat- ury and Monday . . . 98c

## Boys' Soldier Suits.

In strong Khaki Drill, piped with red, Tunic with brass but- tons and collar badges strap- ped with red, caps to match; "Tommy Atkins" style, assorted sizes. Regular \$1.60. Friday, Saturday and Mon- day . . . \$1.44

Economy Prices  
On Enamelware.

Enamel Milk Pans . . . 15c  
Enamel Milk Pans, Deep- er . . . 15c  
Wrinsing Pans, 2 handles. 34c  
Enamel Cake Pans, oblong. 12c  
Enamel Cake Pans, Deep- er . . . 15c  
Enamel Saucepan . . . 15c  
Enamel Dipper, handy size. 10c  
Enamel Basins, 2 sizes, 7 & 12c  
Enamel Skillet . . . 15c  
Enamel Roasters, this is a beauty, patent. Special . 44c  
Enamel Strainers, large . 20c

## Enamel Double Boiler.

ONLY ONE DOZEN.  
A very hand cooking utensil, comes in stout grey enamel, can be used as a steamer also, gen- erous size. Special, 69c  
Fri, Sat. & Monday . . . 69c

## Coal Scuttles.

A strong and serviceable make and yet inexpensive, strong handle, all Japaned body. Special, Friday, Satur- day and Monday, each . . . 19c

## Spring Gloves.

LADIES' CHAMOIS GLOVES.  
A perfect glove for Spring wear, they come in that popular natural shade, two Pearl buttons, self etched backs; they wash perfectly. Reg. \$1.35. Friday, Sat- ury and Mon- day . . . \$1.18

CHILDREN'S GLOVES.  
Just what you need for the children, a slight Jersey Glove with fine fleecing in- side, alright for knockabout wear; shades Navy, Brown and Cardinal. Special, per pair, Friday, Satur- day and Monday . . . 10c

British War  
Alphabet.

A for our Army so bold and strong,  
B for the Belgians who have fought so long,  
C for the Credit which our soldiers well earn,  
D for their Duty which they strive hard to learn,  
E for the Enemy which must go down,  
F for the Freedom which our boys strive to own,  
G for the General he works with might and main,  
H for the cruel Huns who are causing all the pain,  
I for Italy who nobly joined the fight,  
J for the plucky Japs close guarding day and night,  
K for Kitchener so daring and bold,  
L for the Laws that his soldiers uphold,  
M for the Machine guns, how loudly they roar,  
N for the Nurses, who attend sick and sore,  
O for the Ones that are taken by the foe,  
P for the Privates that are willing to go,  
Q for the Questions that sounds in our ear,  
R for the Responders, how nobly they hear,  
S for our Soldiers, who are willing to fight,  
T for the Trenches, where they fight day and night,  
U for the Unity which in future will be,  
V for the Views that our soldiers will see,  
W for the Workmen who work day and night,  
X the Xcitement when the machine don't work right,  
Y for the Young men who are willing to fight,  
Z for the Zeal that inspires me to write.

ERNEST BUGDEN.

Petley, April, 22nd, 1916.

Description  
of a Battlefield

VERDUN, WOUNDED, BUT STILL UPRIGHT, STANDS LIKE A SEN- TINEL GUARDING THE EN- TRANCE OF THE VALLEY ABOVE THE BLACKENED RUINS OF HOUSES.

Paris, April 21.—Gaston Deschamps, writing in the Temps, gives a vivid description of his visit to the Verdun front from which he has just returned. The account follows:

"The vast battlefield was veiled by a sleety rain, but Verdun, Doaumont and Le Mort Homme were vaguely out- lined in the distance. Verdun, wound- ed, but still upright, stood like a sentinel guarding the entrance of the valley above the blackened ruins of houses, while the towers of the Cathed- ral rose like two outstretched arms in protest against the misery and des- olation about them. The Citadel still stands unscathed.

"Villages are now abandoned and become military positions, where the further presence of civilians is im- possible. The whole aspect of the vast panorama is one of intense mel- ancholy. At intervals incendiary bombs burst among the ruins, throw- ing great clouds of black smoke and debris. From time to time fires were started by bombs, and here and there village houses were seen blazing through the mists, but amid all this scene of fire and explosion no human being could be seen anywhere, as it was hidden by monsters of steel which far away were working their terrible destruction. The absence of human activity added to the supreme sadness.

"One could see the ancient ruins of the old Roman camp in this vicinity, where the Romans resisted the Ger- man invaders, even Rue Mazel, the main thoroughfare of Verdun, being an ancient Roman road."

## ARAB FOES.

The Arab who is fighting with the Turks in Mesopotamia has some curi- ous ways. He takes off his shoes when he enters a house, but keeps on his hat. He reads and writes from right to left. He eats scarcely any- thing for breakfast or dinner, but in the evening he sits down to a hot meal swimming in oil. His sons eat with him, but the ladies of the house- hold wait till the males have finished. The Arab rides a donkey when trav- elling, his wife walking behind, and he laughs at the idea of giving up his seat for a woman. The Arab has one strong virtue, and that is, he is rarely seen drunk. He is not very affectionate, is very ignorant, and has so little initiative that he rarely takes on anything worth do- ing, or attempts to carry out any enterprise.

SAVE KERO OIL, besides getting six times more light, by using the Aladdin Lamp. CHESLEY WOODS, Sole Distributor, 182 Duckworth St.—up20,11

Gard's Linctum Cures Diphtheria.