

## Northern Pacific Ry.

Condensed Time Table from Winnipeg.

### MAIN LINE.

Morris, Emerson, St. Paul, Chicago, Toronto,  
Montreal, Spokane, Tacoma, Victoria, San  
Francisco

Lv. Daily..... 1.45 p.m.  
Ar. Daily..... 1.05 p.m.

### PORTAGE LA PRAIRIE BRANCH.

Tues., Thur., Sat.	Mon., Wed., Fri.
4:20 p. m.	4:20 p. m. Leaves Winnipeg.
6:25 "	5:56 " " Oakville.
7:20 "	6:30 " " Portage la Prairie.
8:25 "	7:15 " " Arrives Beaver.
Tues., Thur., Sat.	Mon., Wed., Fri.
7:30 a. m.	7:30 a. m. Leaves Beaver.
8:15 "	10:30 " " Arrives Portage la Prairie
8:45 "	11:06 " " Oakville.
10:25 "	1:10 p. m. Arrives Winnipeg.

### LAKE BRANCH.

Mon. & Fri.  
8:40 a. m. Leaves Portage la Prairie.  
9:20 " " Arrives Oakland.

Mon. & Fri.  
9:30 a. m. Leaves Oakland.  
10:20 " " Arrives Portage la Prairie.

### MORRIS-BRANDON BRANCH.

Morris, Roland, Miami, Baldur, Belmont,  
Wawanesa, Brandon. Also Souris River  
Branch, Belmont to Elgin.

Lv. Mon., Wed. & Fri. .... 10.40 a.m.  
Ar. Tues., Thurs. & Sat. .... 4.40 p.m.

FOR FURTHER INFORMATION APPLY TO

H. SWINFORD,

Depot Building, Water St., Winnipeg, Man.

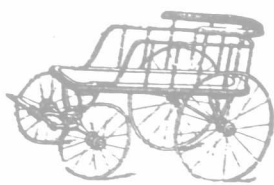
Are You Thinking  
of Building?

IF SO, TO YOUR AD-  
VANTAGE TO WRITE

Dick, Banning & Co.,  
WINNIPEG, MAN.

Our 1900  
Baby Carriage  
and Wagon

Catalogue is now ready to mail. If requiring one,  
send us your address.



The finest line in Canada. Ask for our big furniture  
catalogue—it makes house-furnishing easy by mail.

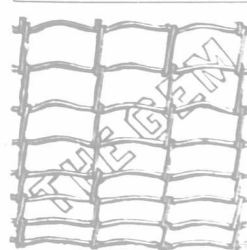
Scott Furniture Co.,

276 Main Street, Winnipeg, Man.

Largest Dealers in Western Canada.

**AGENTS WANTED** for the Gem Sickle  
and Tool Grinder,  
with Saw Gunning  
attachment. A necessity to every farmer. D. M.  
McMILLAN, Brandon, Man., sole agent for Manitoba  
and Eastern Assiniboia.

**LIGHTNING WELL MACH**  
IS THE STANDARD  
STEAM PUMPS AIR LIFTS  
GASOLINE ENGINES  
WRITE FOR CIRCULAR  
THE AMERICAN WELL WORKS  
AURORA ILL - CHICAGO - DALLAS TEX



### FENCE MACHINE

The GEM still holds  
the record—120 rods 10-  
wire fence in 10 hours.  
Price, \$5.00. Coiled  
Spring and other wire for  
sale in any quantity.  
Write—

McGregor, Banwell  
& Co.,  
WINDSOR, - ONT.

## A \$3000. STOCK BOOK FREE

It contains 183 large colored engravings of Horses, Cattle, Sheep, Hogs and Poultry with an illustrated veterinary department. The engravings cost us \$3000. We will mail you one copy free, postage prepaid, if you write us and answer these four questions: 1st—Did you ever use "International Stock Food" for Horses, Cattle, Sheep or Hogs? 2nd—Is it for sale in your town in 2-lb. pails? 3rd—How many head of stock do you own? 4th—Name this paper. "International Stock Food" is a safe vegetable stimulating tonic and blood purifier. It fattens stock in 30 days less time and saves grain. Aids digestion and assimilation. Thousands of farmers feed 500 to 3000 lbs. every year. It makes colts, calves, lambs and pigs grow very rapidly and only costs 3¢ 3 Feeds for One Cent. 63 Makes hogs weigh 300 lbs. at 6 months. It cures and prevents many diseases. Always sold on a guarantee to refund your money if it ever fails. Cheap and inferior imitations are on the market. Our dealers give this book free with "International Stock Food" in pails or barrels.

Largest Stock Food Factory in the World.  
Capital Paid In, \$300,000.00.

Address **INTERNATIONAL FOOD CO., MINNEAPOLIS, MINN., U. S. A.**

We occupy 15 floors, also 100x25 feet each.  
In addition to our large Printing Dept.

We own for our "International Stock Food Farm" three Stallions, Buttonwood 2:17, by Nutwood 2:38, International Stock Food, by Hartford 2:22 and Naheola 2:22, by Lockhart 2:38. They eat "International Stock Food" every day. It saves grain.

## CANADIAN PACIFIC RY.

UNEQUALLED ACCOMMODATION.

The only line having through  
trains to the

## EAST AND WEST

SLEEPING CARS TO

Montreal, Toronto,  
Vancouver and East,  
and West Kootenay.

THE ONLY LINE RUNNING

## TOURIST SLEEPING CARS.

These cars are provided with every  
requisite, and only a nominal charge  
is made for a berth.

CARS RUN TO

Boston, Montreal, Toronto,  
Vancouver, Seattle.

Rates and particulars of service to

ATLIN, DAWSON CITY,  
CAPE NOME, AND THE  
ALASKAN GOLD FIELDS.

For full particulars apply to the nearest C.  
P. R. agent, or address:

**C. E. McPHERSON,**  
GEN. PASS. AGENT. WINNIPEG.

## Persianic Sheep Dip and Animal Wash.

A NON-POISONOUS LIQUID "DIP."

Kills Ticks. Kills Red Lice.  
Heals Wounds.

Greatly Improves quality of  
WOOL.

For Horses, Cattle, and Pigs.

Removes all insects. Thoroughly  
cleanses the skin.

Leading "STOCKMEN" endorse it as  
the CHEAPEST and most EFFECTIVE  
"Dip" on the market.

SOLD BY ALL DRUGGISTS, 50 cents PER QT.  
Special rates in larger quantities.

MADE ONLY BY

**The Pickhardt Renfrew Co.**

LIMITED,

STOUFFVILLE, ONT.

## FARMERS, ATTENTION! Cement Stables, Walls, Floors, ETC.,

Built on short notice by an expert cement mechanic.  
Work done any where in Ontario or Manitoba.

Address:

**ROBERT TAGGART,**

Box 616. Woodstock, Ont.

PLEASE MENTION FARMER'S ADVOCATE.

## Strathy's "HINGE" Stay Field Fence and SINGLE POLE Gates

THE 20th  
CENTURY  
FENCE.

SHOWING HINGE  
MOVEMENT OF  
STAYS UNDER PRESSURE  
STAYS CANNOT BEND  
& WILL SPRING BACK TO  
PLACE WHEN PRESSURE IS  
REMOVED.



A fence competitor says

"It has no equal."

A trial will convince you also.

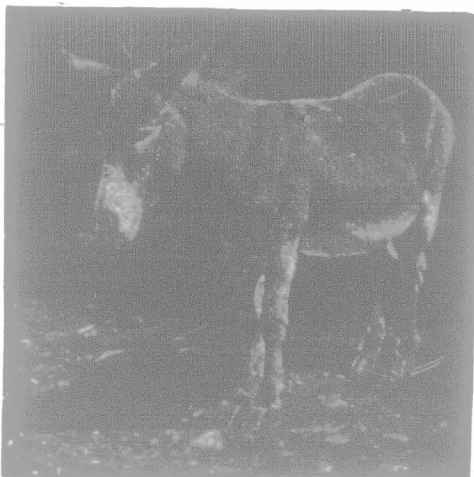
The product of years of practical experience, careful study and experiment under the hardest climatic conditions of heavy snow and severe frost in winter and high temperature in summer, with a variation of 150 degrees. Our Spring Post meets perfectly the requirements and overcomes all the difficulties of contraction and expansion, under a variation of 180 degrees of temperature, and has besides a reserve capacity of as much more to provide for great strain and to automatically take up the stretch in the wires. Our "Hinge" Stays so act, when under pressure of snow or other weight, that when the weight is removed the fence springs back to place, with Stays unbent and fence uninjured. A system all our own and unlike any other. We use heavy wires—high-carbon spring-steel wire of highest quality—but our system is cheaper and the completed cost less than any other fence. Write for full particulars, and state fully your requirements.

**THE STRATHY WIRE FENCE CO.,** Welland, Ont.  
(Successors to Strathy & Co.)

Agents of ability wanted in every part of Canada.

## BINDER TWINE

The man that don't realize the importance of sustaining this co-operative twine movement with his patronage and influence is little better than a



**FARMERS' CO-OPERATIVE BINDER TWINE COMPANY, Limited, Brantford,** with its thousands of stockholders, is again ahead in the great Binder Twine race for the harvest of 1900. Competition defied. Red Star (magnificent), 12c.; Blue Star, 11c.; Standard, 10c. Mill running full tilt. Raw material bought right. See our farmer agents at once. Farmers, you would have paid 16c. to 20c. a pound this coming season for twine had it not been for the existence of this Co-operative Company. Opposition—"Buy us you can't. Lease us you cannot. Crush us if you can. We hold you at defiance so long as the farmers are loyal to their trust." Order early, this is your last warning.

**JOSEPH STRATFORD,**  
GENERAL MANAGER.

*THE Very Best*  
PLACE FOR THE FARMER'S SON TO SPEND  
THE WINTER MONTHS IS AT THE  
**Winnipeg Business College.**

WRITE FOR HANDSOME CATALOGUE (FREE).

**G. W. DONALD, SECRETARY.**

## SPRING TERM

Begins Monday, April 2nd.

**Central Business College, Toronto.**

Twelve regular teachers. Sixty typewriting machines. Splendid equipment. Costs no more for a course here than in a small, half-equipped school. No vacations. Work runs right along through July and August. Write for catalogue.

**W. H. SHAW, PRINCIPAL.**

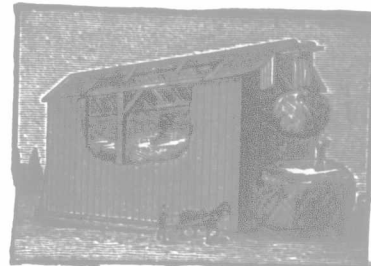
ADDRESS



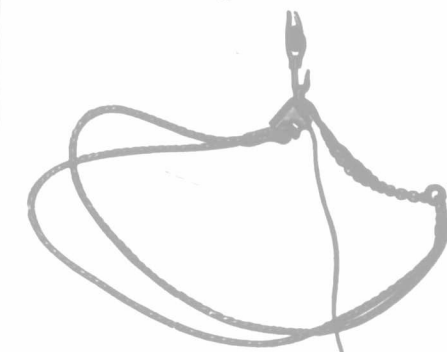
**Belleville Business College..**

BELLEVILLE, ONTARIO.

**BUCHANAN'S**  
(Malleable Improved)  
**PITCHING MACHINE**  
For unloading hay and all kinds of loose grain.



Unloads on either side of barn floor without changing car. No climbing necessary. Malleable Iron Cars. Steel Forks. Knot Passing Pulleys. Will work on stacks as well as in barns. Satisfaction guaranteed.



**The Common-Sense Sheaf-Lifter**  
Works in connection with Pitching Machine, and is the most complete apparatus ever offered to the public for pitching sheaves. Sheaves left in the mow just as they come from the load.

## RESPONSIBLE AGENTS WANTED

Circulars, Prices and Terms on application to  
**M. T. BUCHANAN & CO., Ingersoll, Can.**

STAY AT

## HOTEL LELAND

The Leading Hotel of the West.

ALL MODERN CONVENIENCES. RATES, \$2 to \$4 PER DAY.  
BUS MEETS ALL TRAINS.

**W. D. DOUGLAS, Prop., Winnipeg, Man.**

PLEASE MENTION FARMER'S ADVOCATE.